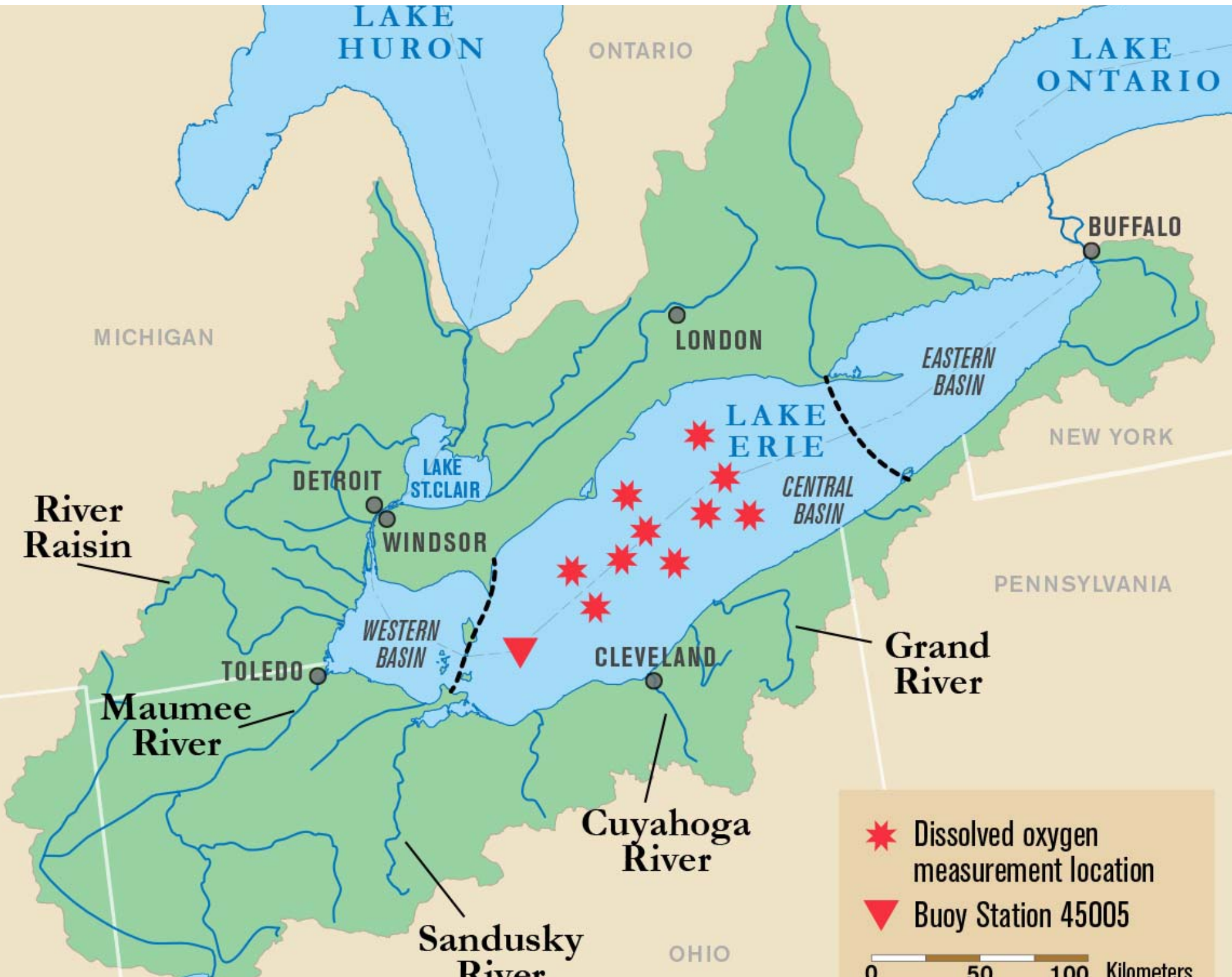



# Harmful Algal Blooms (HAB's)

Presented by  
Rob Karner, M.S.  
Watershed Biologist  
Glen Lake Association  
[rkarner@leelanau.org](mailto:rkarner@leelanau.org)

# Lake Erie





 Dissolved oxygen measurement location

 Buoy Station 45005

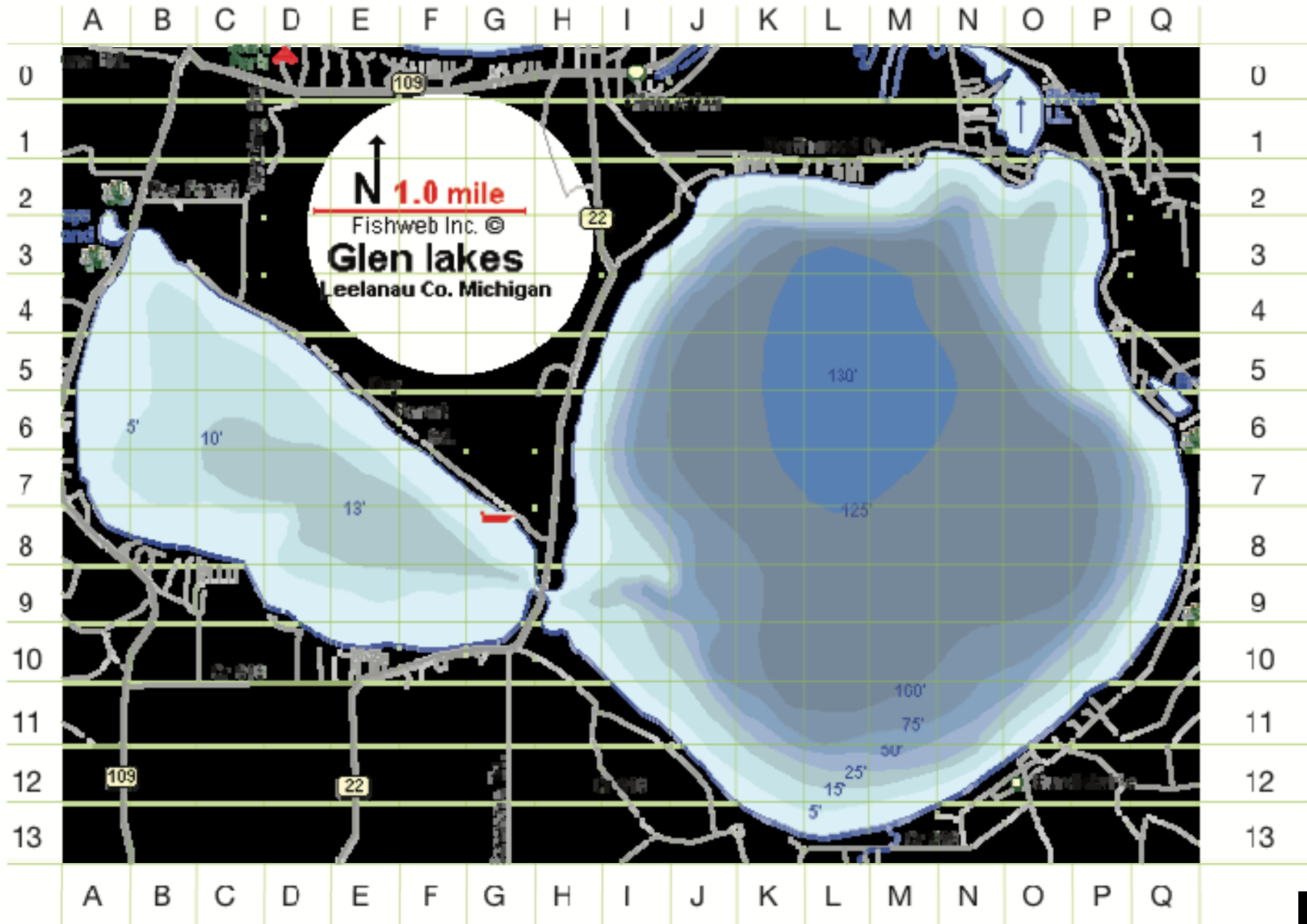
0 50 100 Kilometers





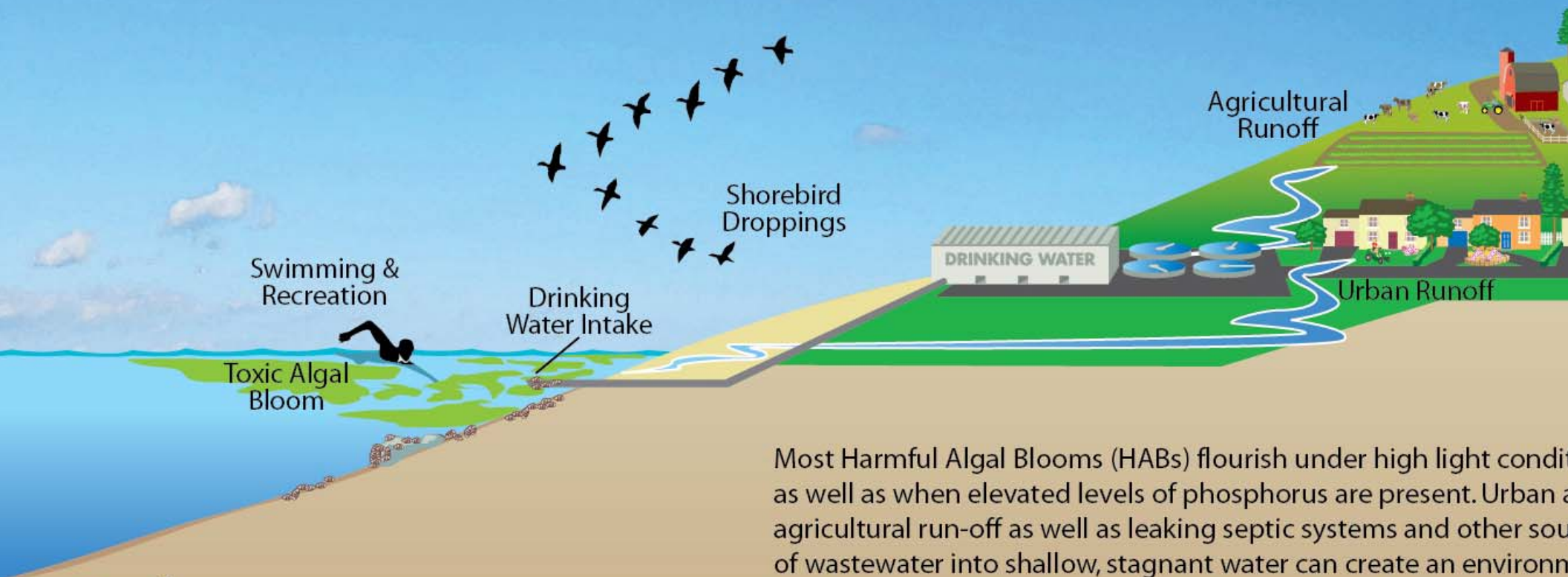
freshwater solutions<sup>LLC</sup>  
innovative swimmer's itch strategies

Thanks to Fishweb.com for permission to modify this map to aid in combating swimmer's itch. Check out Fishweb.com for more map information.



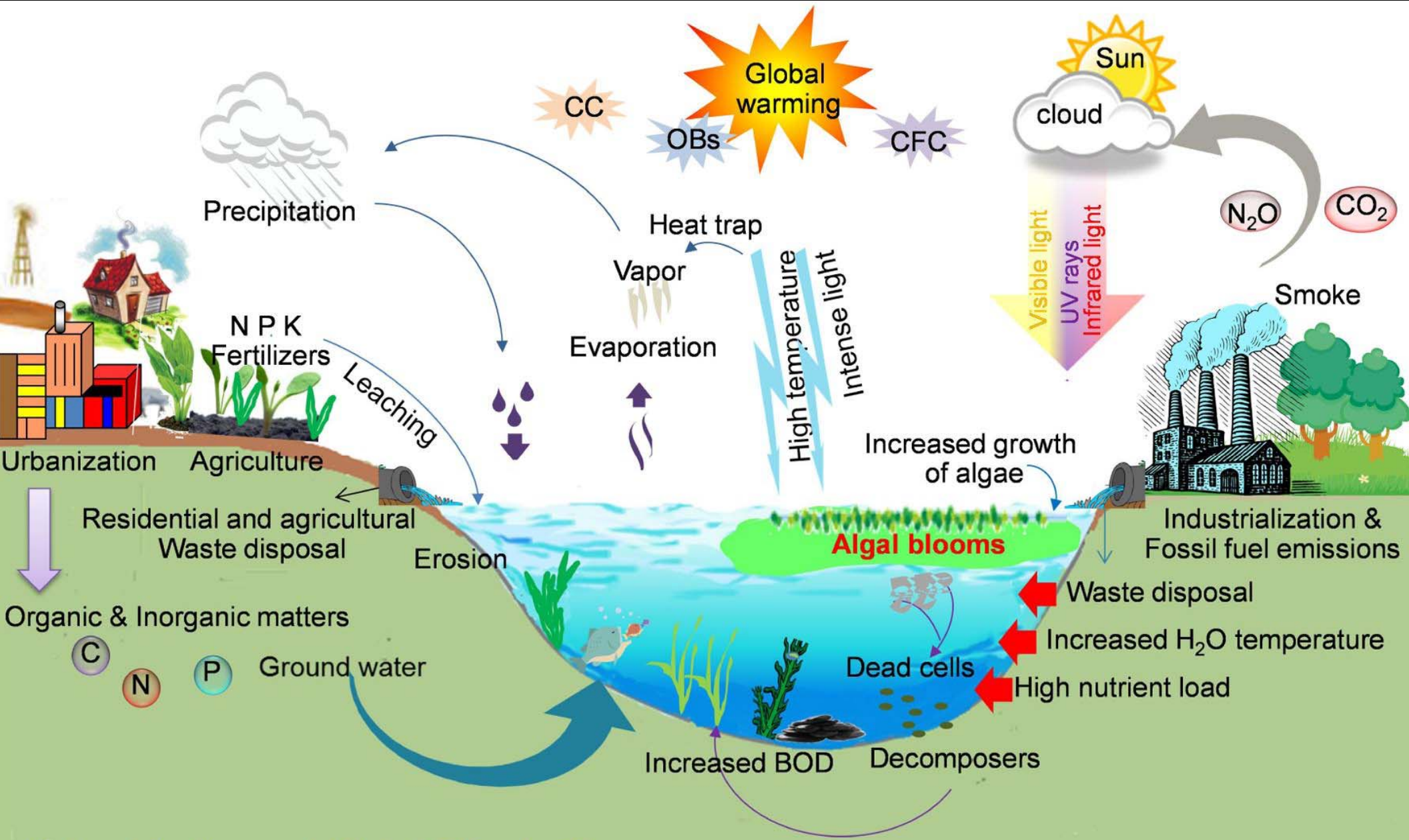


# Factors Influencing the Growth of **HARMFUL ALGAL BLOOM**



Most Harmful Algal Blooms (HABs) flourish under high light conditions as well as when elevated levels of phosphorus are present. Urban and agricultural run-off as well as leaking septic systems and other sources of wastewater into shallow, stagnant water can create an environment for algae to flourish. Zebra mussels selectively feed and filter out other algae, which enables HABs to flourish.





**Eutrophication and Global Climate Change**

# Health Impacts of Cyanotoxins

**Note:** Not all cyanotoxins lead to all of these health impacts. These listed impacts are caused by microcystins or cylindrospermopsin, the two cyanotoxins that EPA has issued Health Advisories for.

## IN HUMANS

### Brain

**Source:** Ingestion

**Symptoms:**

- Headache
- Incoherent speech
- Drowsiness
- Loss of coordination

### Respiratory System

**Source:** Inhalation

**Symptoms:**

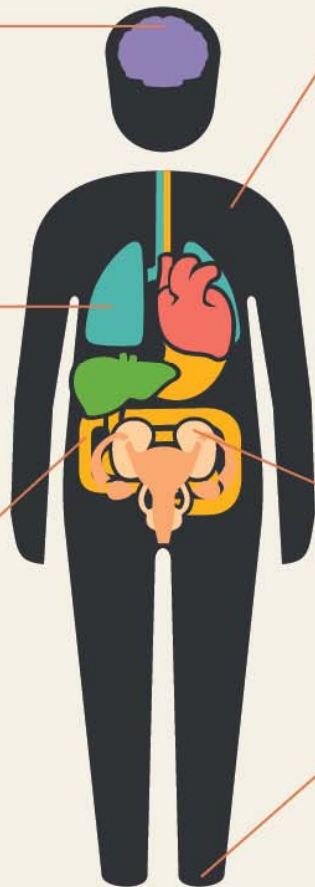
- Dry cough
- Pneumonia
- Sore throat
- Shortness of breath
- Loss of coordination

### Digestive System

**Source:** Ingestion, drinking contaminated water, or eating contaminated fish

**Symptoms:**

- Abdominal pain
- Nausea
- Vomiting
- Diarrhea
- Stomach cramps



### Body

**Source:** Contact, e.g. swimming

**Symptoms:**

- Irritation in eyes, nose, and throat
- Blistering around the mouth
- Skin rash, including tingling, burning and numbness
- Fever
- Muscle aches (from ingestion)
- Weakness (from ingestion)

### Organs

**Source:** Ingestion

**Symptoms:**

- Kidney damage
- Abnormal kidney function
- Liver inflammation

### Nervous System

**Source:** Ingestion

**Symptoms:**

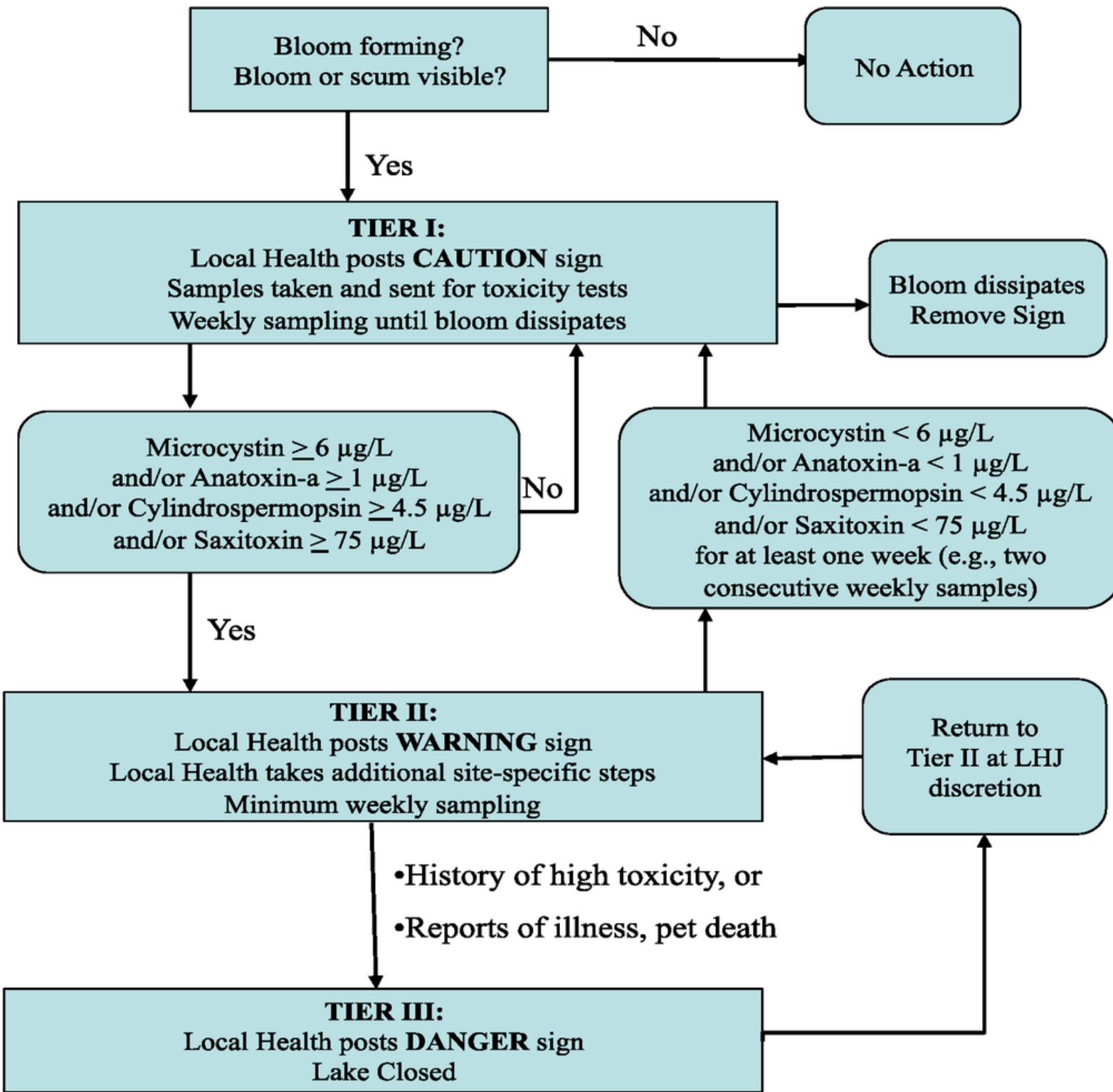
- Tingling
- Burning
- Numbness

## IN PETS

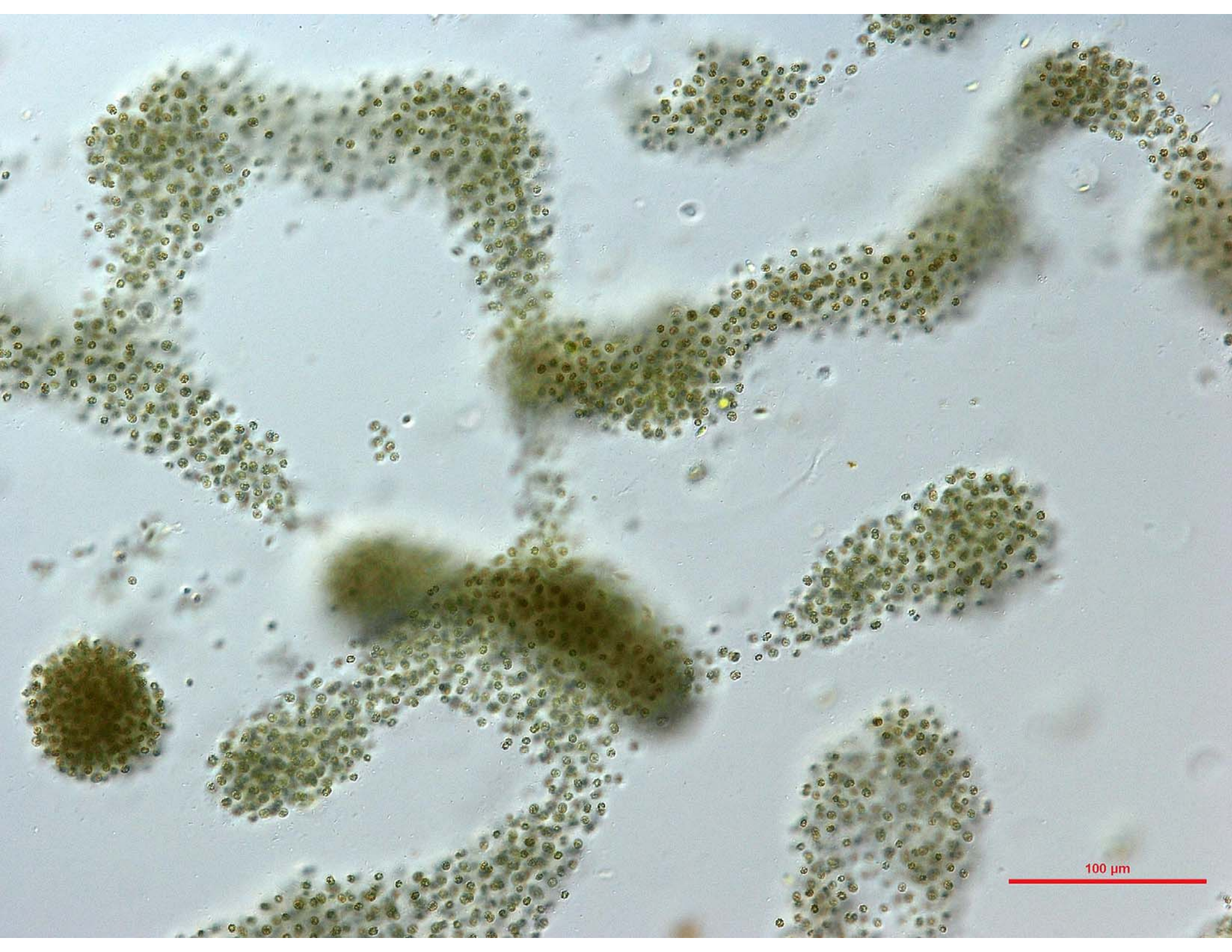
**Symptoms:**

- Vomiting
- Fatigue
- Shortness of breath
- Difficulty breathing
- Coughing
- Convulsions
- Liver failure
- Respiratory paralysis leading to death













### ANATOXIN

- Toxin type: *Neurotoxin*
- Exposure Symptoms: *Staggering, gasping, convulsions, diarrhea, death*
- Algal Producers: *Anabaena, Aphanizomenon, Planktothrix*



### CYLINDROSPERMOPSIN

- Toxin Type: *Hepatotoxin*
- Exposure Symptoms: *Vomiting, diarrhea, liver tumors, death*
- Algal Producers: *Aphanizomenon, Cylindrospermopsis, Planktothrix*



### SAXITOXIN

- Toxin Type: *Neurotoxin*
- Exposure Symptoms: *Numbness, gasping, paralysis, incoherence, death*
- Algal Producers: *Anabaena, Cylindrospermopsis*



### MICROCYSTIN

- Toxin Type: *Hepatotoxin*
- Exposure Symptoms: *Rashes, vomiting, diarrhea, headaches, chest pain, fever, liver tumors, death*
- Algal Producers: *Anabaena, Microcystis, Nostoc, Planktothrix*



## TOXICITY SCALE

[ Consumption thresholds for toxic effects based on daily ingestion in milligrams of toxin per kilogram of body weight. ]























## Protect Your Pets!



### What are Blue-green algae and how do they effect animals?

- Blue-green algae, (scientifically known as Cyanobacteria) are small, mostly microscopic photosynthetic aquatic organisms. Some can produce toxins which is why they can be a concern.

-If animals ingest these toxins they can be quickly sickened and even die.

- Signs of poisoning are staggering, salivation, vomiting, and difficulty breathing.

### How to protect your pet

- Don't let pets swim or drink from areas where the water is scummy or where toxins are known to exist.

- If pets swim in scummy water, rinse them off immediately with clean water. Do not let them lick the scum off their fur.

- If you think your pet might have been poisoned by blue-green algae or their toxins seek medical treatment right away.

