

# *Community Parks and Recreation Plan*

Leelanau County, Michigan

# 2020-24



February 2020

*Prepared for:*  
Leelanau County, Michigan

*Submitted by:*  
Gosling Czubak  
Engineering Sciences, Inc.  
Planning & Landscape  
Architecture



# 2020-2024 COMMUNITY PARKS AND RECREATION PLAN

## **PREPARED FOR:**

Leelanau County, Michigan  
c/o Parks & Recreation Commission  
8527 E. Government Center Drive, Suite 101  
Suttons Bay, Michigan 49682  
Phone: 231-256-9711

## **PARKS & RECREATION COMMISSION**

Casey Noonan: Chairman  
Dave Barrons: Vice-Chairman  
Steve Christensen: Secretary  
Clayton Ball  
Robert Johnson  
Melinda Lautner  
John Popa  
Kyle Trevas  
Todd Yeomans  
Ty Wessell

## **BOARD OF COMMISSIONERS**

District #1: Anthony Ansorge  
District #2: Debra Rushton  
District #3: William J. Bunek (Chairman)  
District #4: Ty Wessell  
District #5: Patricia Soutas-Little  
District #6: Carolyn Rentenbach  
District #7: Melinda C. Lautner (Vice-Chairman)

Chet Janik - County Administrator  
Laurel Evans - Executive Assistant to the County Administrator

## **PREPARED BY:**

Gosling Czubak Engineering Sciences, Inc.  
1280 Business Park Drive  
Traverse City, Michigan 49686





# Table of Contents

## **Introduction and Planning Process**

Section 1 – Community Description

Section 2 – Administrative Structure

Section 3 – Recreation Inventory

Section 4 – Public Input Process

Section 5 – Goals and Objectives

Section 6 – Action Program

**Appendix A - Glen Arbor Sun article (September 11, 2017),  
*Leelanau County Historical Preservation Society forms to save Poor Farm barn.***

**Appendix B - Public Survey Instrument and Responses**

**Appendix C - Public Open House Flyer**

## **Appendix D**

Public Open House and Public Hearing Notices

Public Hearing Meeting Minutes

County Board Adopting Resolution

## **Appendix E**

Recreation Plan Certification Checklist

Letters of Transmittal



## Introduction

The Leelanau County Parks and Recreation Commission engaged the Gosling Czubak Engineering Sciences, Inc., to provide the technical assistance and work with the County Parks & Recreation Commission to review and update the *Community Parks and Recreation Plan* (Rec Plan) which addresses the County's recreation strategy for 2020 to 2024, inclusive.

The intent of this effort is to build on the planning and implementation that has been accomplished since the Leelanau County Planning Department updated the previous Leelanau County Parks and Recreation Master Plan. The current effort will seek to improve the quality recreational opportunities provided for the citizens of and visitors to Leelanau County, both current and future.

The Rec Plan serves as a guide for the maintenance, upgrade and development of parks and recreation facilities and resources for the next five years and beyond. The following update to the Plan provides additional framework for utilizing the County's resources for recreational purposes in order to effectively meet identified and anticipated needs and complement the County's overall planning and development efforts.

The planning process that was undertaken for this plan utilized and incorporated input from County residents, stakeholders, commissioners, and staff. From this process, the Rec Plan's goals, objectives, and actions have been updated. Another element of this process was an updated assessment of the County's and local governments' recreational resources.

The Rec Plan concludes with an updated action program that provides a framework, direction, and activities that can be adopted and implemented for future recreational development and programming. This plan has also been prepared to satisfy recreation planning requirements established under the Michigan Department of Natural Resources guidelines.

### **LEELANAU COUNTY PARKS AND RECREATION COMMISSION'S MISSION STATEMENT:**

*The mission of the Leelanau County Parks and Recreation Commission is to provide cost-effective recreational opportunities for the residents of and visitors to Leelanau County.*

Adopted February 20, 2002





## Community Description

### LOCATION

Leelanau County was established in 1863 and is one of 83 counties in the State of Michigan. The County is located in the northwestern portion of Michigan's lower peninsula – “the Little Finger”. The County itself is a peninsula surrounded by Lake Michigan, with the east side of the County bordering the west arm of Grand Traverse Bay/Lake Michigan.

Leelanau County is well recognized throughout the State of Michigan and the United States as an area of significant natural beauty. The County's unique accessibility to Lake Michigan, the presence of a major national park and state park, relative isolation as a peninsula, and a sought-after rural, small town character have contributed to its desirability as both a place to visit and to live. **(Refer to Map Figure 1 - pg 6.)**

Leelanau County and the surrounding area was first occupied by Native Americans. The Grand Traverse Band of Ottawa and Chippewa Indians is a sovereign nation within the borders of the County, owning approximately 627 acres. (Source: Wikipedia.org).

The County borders with Benzie County on the south side and Grand Traverse County/City of Traverse City on the south and east sides. The local governments in the County include the eleven (11) townships of Bingham, Centerville, Cleveland, Elmwood, Empire, Glen Arbor, Kasson, Leelanau, Leland, Solon, and Suttons Bay; the incorporated villages of Suttons Bay, Northport, and Empire; and a portion of the City of Traverse City.

The major population and settlement areas continue to be Greilickville, Suttons Bay, Peshawbestown, Omena, Northport, Leland, Empire, Glen Arbor, Burdickville, Maple City, and Cedar. A small portion of Traverse City is located in the southeastern corner of Leelanau County on Grand Traverse Bay. Traverse City serves as the regional center for the area.

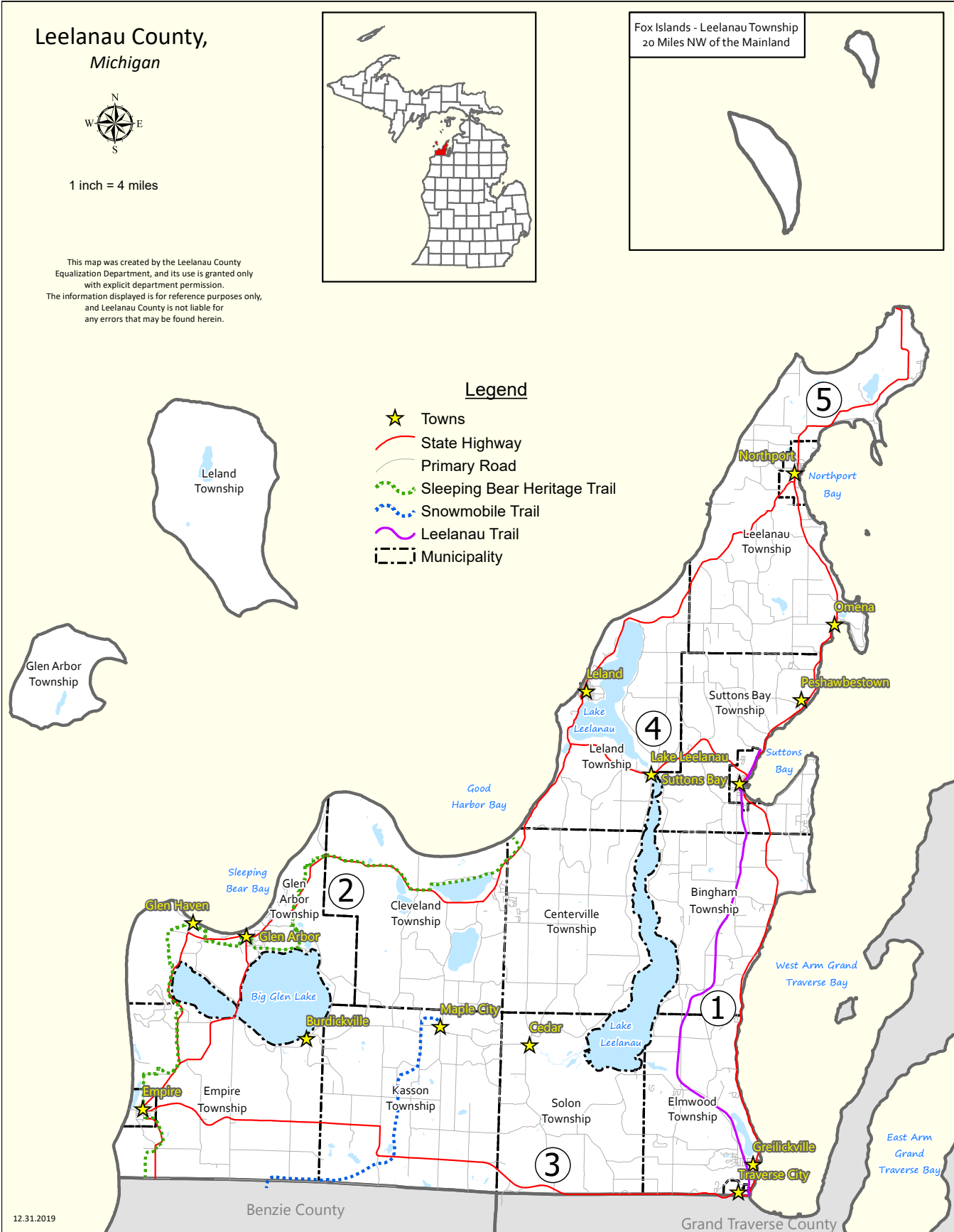
Leelanau County has 346 square miles in land area and 2,185 square miles of water. The County is a mixture of orchards, farms, forests, moraines/drumlins, valleys, sand dunes, wetlands, rivers, lakes, bays, villages, residential pockets, and resorts. The settlement pattern of the non-tribal population was agriculture. (Source: U.S. Census Bureau; [https://en.wikipedia.org/wiki/Leelanau\\_County,\\_Michigan](https://en.wikipedia.org/wiki/Leelanau_County,_Michigan))

### LAND USE

The Leelanau General Plan's chapter on “Preservation of Peninsula Character” states that

*“The existing natural and people-made features on the peninsula that make up its rural character are inter dependent with the activities that comprise its economic base. It is important therefore, that future land use changes on the peninsula enhance, not undermine the character of the area around it, and in so doing, contribute to the protection of the unique rural character of the entire Leelanau Peninsula.”*

**MAP FIGURE 1.**  
**GEO-POLITICAL**



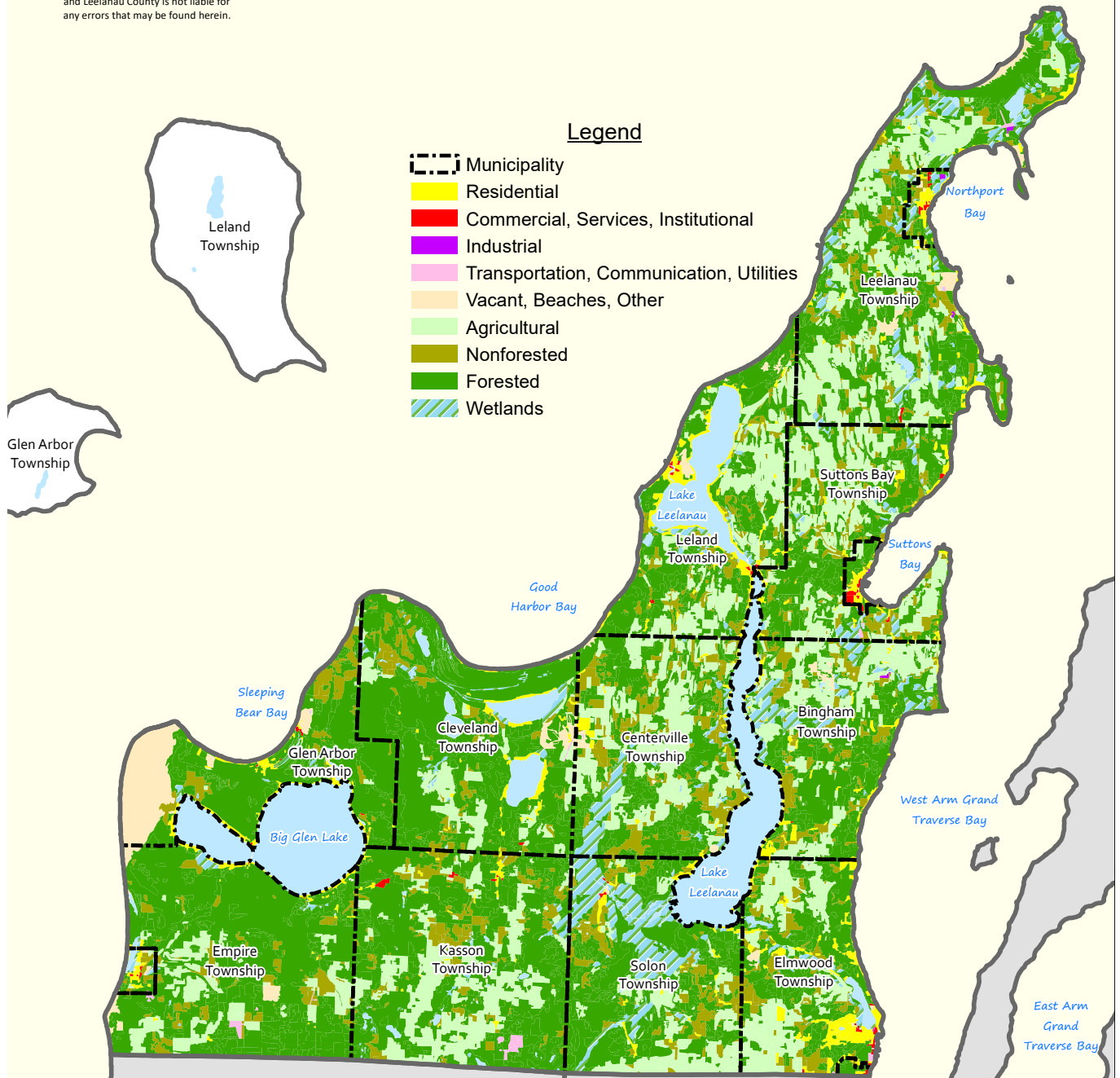
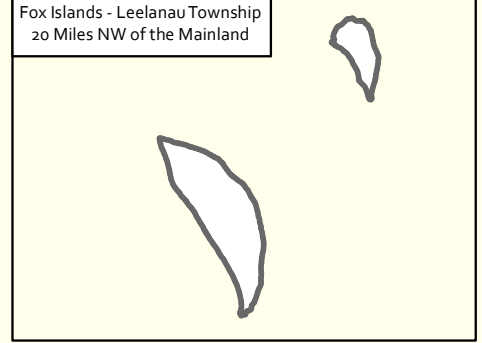
# MAP FIGURE 2. LAND USE / LAND COVER

## Leelanau County, Michigan



1 inch = 4 miles

This map was created by the Leelanau County Equalization Department, and its use is granted only with explicit department permission. The information displayed is for reference purposes only, and Leelanau County is not liable for any errors that may be found herein.





## Community Description

In numerical terms, Leelanau County is nearly 21% agricultural land, 48% wooded land, 15% open land, 6% inland lakes/wetlands, 2% sand dune/barren land, and 8% urban land. (Land use/cover relationship in 2000.) **(Refer to Map Figure 2, pg 7.)**

The current development pattern is characterized by the fragmentation of large agricultural or forested parcels into lots between 1 and 20 acres in size primarily for use as sites for single family homes. The Leelanau General Plan continues to promote and work towards a future of strong intergovernmental cooperation through education in an effort to balance growth in a manner that protects the natural features and preserves and enhances Leelanau County's character while accommodating future growth and economic expansion.

### ZONING

In Leelanau County, each of the eleven townships and three villages maintain and administer its own zoning authority. Each of these communities has an established zoning ordinance from which the zoning administrator and planning commission make their implementation and enforcement decisions. Each of the communities provides certain areas in which public and private park and recreational facilities may be located. The Leelanau County Planning Commission serves as an advisory and oversight body to review and make recommendations relative to zoning and land use issues within each of the townships and villages. The recommendations are non-binding and serve to guide the discussions and decision-making processes of the local governments. Each new and any expansion of recreational facilities should be coordinated with the affected community to insure appropriate location for the proposed activity and consistency with the township or village master plan and zoning ordinance.

### TRANSPORTATION

The primary mode of transportation for residents within the County is by automobile via a connection of state and county highways. The Michigan State Highways include M-22, that parallels the shoreline on both the east and west sides of the county; M-72, which connects Traverse City on the east to Empire on the west; M-204, which connects Leland to Suttons Bay over the Lake Leelanau Narrows; M-109, which extends just north of Empire through Sleeping Bear Dunes National Lakeshore to Glen Arbor; and M-201, in the Village of Northport. These trunklines are maintained by the Michigan Department of Transportation through a contract with the Leelanau County Road Commission. In addition, there are many County roads throughout the area that are maintained by the Road Commission. There is also a ferry service that operates from spring to fall out of Leland to North and South Manitou Islands.

The Bay Area Transportation Authority (BATA) based in Traverse City offers regional bus transportation opportunities by individual reservations and two Village Loops. There is the Suttons Bay Loop and the Glen Arbor Loop which are fixed route services for the rural villages in Leelanau County. This service operates seven days a week to provide rural communities convenient, predictable, and affordable transportation.

There are two off-road, non-motorized transportation throughfares in Leelanau County which are the Leelanau Trail that is part of the Traverse Area Recreation and Transportation Trails, Inc. (TART Trails) and the Sleeping Bear Heritage Trail. The Leelanau Trail stretches over 15 miles through the last of the Leelanau County railway corridors, connecting Traverse City to Suttons Bay. The Sleeping Bear Heritage Trail, when fully completed, will run 27-miles through the Sleeping Bear Dunes National Lakeshore and the villages along M-22 and M-109 on the west side of the County.

Because of the scenic attributes, inherent beauty, and rural characteristics displayed along the Michigan State

Highways of M-22, M-109, and M-204, these routes have been designated the **Leelanau Scenic Heritage Route**. The Route is a major artery of commerce for Leelanau County, a scenic corridor for viewing some of the most memorable vistas, and a gateway to the Sleeping Bear Dunes National Lakeshore. Each highway of the Route provides the traveler, whether local resident or visitor, the opportunity to experience the many unique villages that are woven into the landscape of Leelanau County. **(Refer to Map Figure 3, pg 10.)**

The mission statement of the Leelanau Scenic Heritage Route Committee:

*“To promote measures which protect and enhance the scenic, historical, and recreational characteristics of Michigan State Highways 22, 109, and 204 as they traverse the rural countryside and unique villages of Leelanau County.”*

Source: <https://traversetrails.org/wp-content/uploads/SBHTbrochure2014-e1402926217207.jpg>

### SLEEPING BEAR HERITAGE TRAIL

The idea for the Sleeping Bear Heritage Trail grew from a group called the Leelanau Scenic Heritage Route Committee which has, among its goals, the aim of preserving the beauty and historical integrity of highways M-22 and M-109, while also keeping the road safe. State legislation empowers the group. Networks Northwest Michigan, partnering with TART and MDOT, coordinates the activities. A citizen-led organization, the Heritage Route group includes representatives from the 12 municipalities, the Grand Traverse Band of Ottawa and Chippewa Indians, the Leelanau Conservancy, the Leelanau County Road Commission, Chambers of Commerce, TART Trails, the Sleeping Bear Dunes National Lakeshore and others. (Source: <http://sleepingbeartrail.org>).

In June of 2012, the first 5-mile segment of the Sleeping Bear Heritage Trail was opened for use. This segment runs through the Sleeping Bear Dunes National Lakeshore from the Dune Climb off M-109 through the Historic Village of Glen Haven and the adjacent D. H. Day campground to Day Forest Road in Glen Arbor. In subsequent years, an additional **17 miles** of the Heritage Trail have been completed of the 27-mile trail planned.



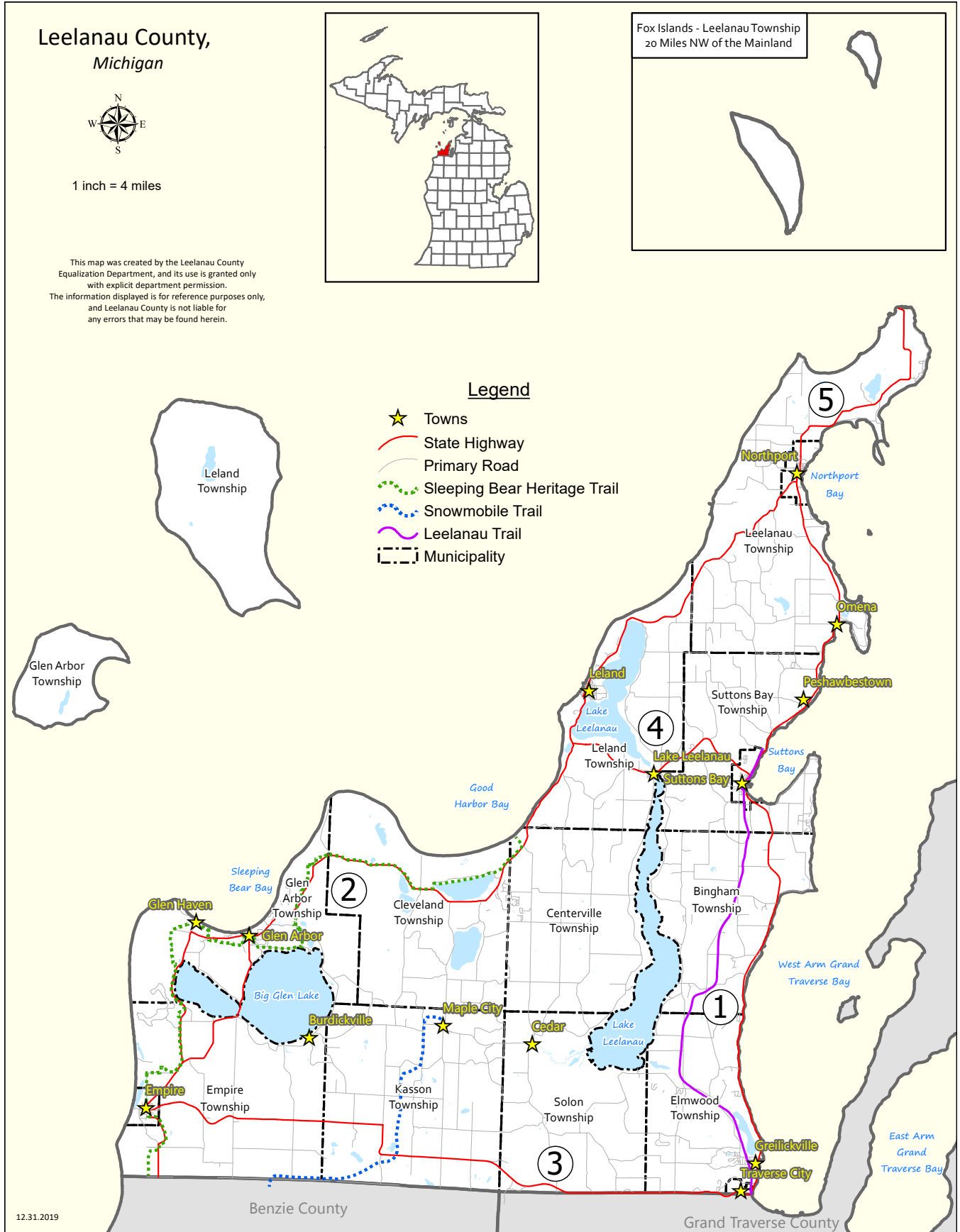
The Trailway which has been designed and developed as a multi-use, non-motorized pathway is separated from the M-22 and M-109 roadways where possible and will provide a safe, alternative transportation opportunity for park visitors. It connects the National Lakeshore to the adjacent communities of Empire and Glen Arbor, which are working with Networks Northwest, TART Trails, MDOT and the County to consider the Trailway routes through their communities. **(Refer to Map Figure 5, pg 13.)**

**MAP FIGURE 3.**  
**SCENIC HERITAGE ROUTE**





**MAP FIGURE 4.**  
**MULTI-USE AND SNOWMOBILE TRAILS**



### LEELANAU COUNTY PRIORITY NON-MOTORIZED TRANSPORTATION PROPOSED ROUTE

The Northwest Michigan Council of Governments developed the Northwest Michigan Regional Non-motorized Transportation Plan and Investment Strategy 2008 for the 13 counties of Emmet, Charlevoix, Antrim, Kalkaska, Grand Traverse, Leelanau, Benzie, Manistee, Wexford, Missaukee, Osceola, Lake, and Mason in northwest lower Michigan. The MDOT commissioned the plan and will use it to prioritize funding projects in the future. The guiding vision of this project is to connect existing trails, offering residents and visitors more opportunities for non-motorized transportation and enjoyment of the region's natural resources.

The project gathered information on existing and future trails from the county, townships, and village parks and recreation commissions, planning commissions and staff, and board members. Sub-regional meetings took place with trail organizations, groups, and stakeholders to review the proposed trail maps for their input. The compiled maps were then presented to the public at sub-regional trail gatherings for input and where the proposed trails were prioritized:

**(Refer to Map Figure 4, previous page; routes in Yellow.)**

1. Pave TART Trail from Grelickville to Suttons Bay (completed)
2. Continue work on the Sleeping Bear Heritage Trail project along M-22 and M-109 through the Sleeping Bear Dunes National Lakeshore. The next targeted phase will complete the linkage from Bohemian Rd. to Good Harbor Beach via a route to be finalized around Little Traverse Lake.
3. Create a connector trail from Traverse City to the Village of Empire (TART Trails).
4. Create a trail along M-204 and M-22 from Suttons Bay (TART Trails) to Leland.
5. Continue the Leelanau Trail (TART Trails) from Suttons Bay to Grand Traverse Lighthouse through Northport. The extension of the trail from 4th Street to Dumas Road in Suttons Bay was completed as a part of the Front Street road project in 2013.
6. The Benzie-Leelanau snowmobile trail is an unofficial route connecting the Benzie-Manistee trail to Maple City. It is used and maintained (groomed) by local clubs through easements by local land owners.



### AIR TRANSPORTATION

Commercial and passenger air service is provided by Cherry Capital Airport located in the south eastern portion of the City of Traverse City. Cherry Capital Airport continues to expand and grow its capacity, serving over 429,000 passengers as of 2015 (Source: Wikipedia.com). Several smaller, local air strips are located in Leelanau County for residents and visitors who own their own aircraft, including Woolsey Memorial Airport north of Northport.

MAP FIGURE 5.  
SLEEPING BEAR HERITAGE TRAIL



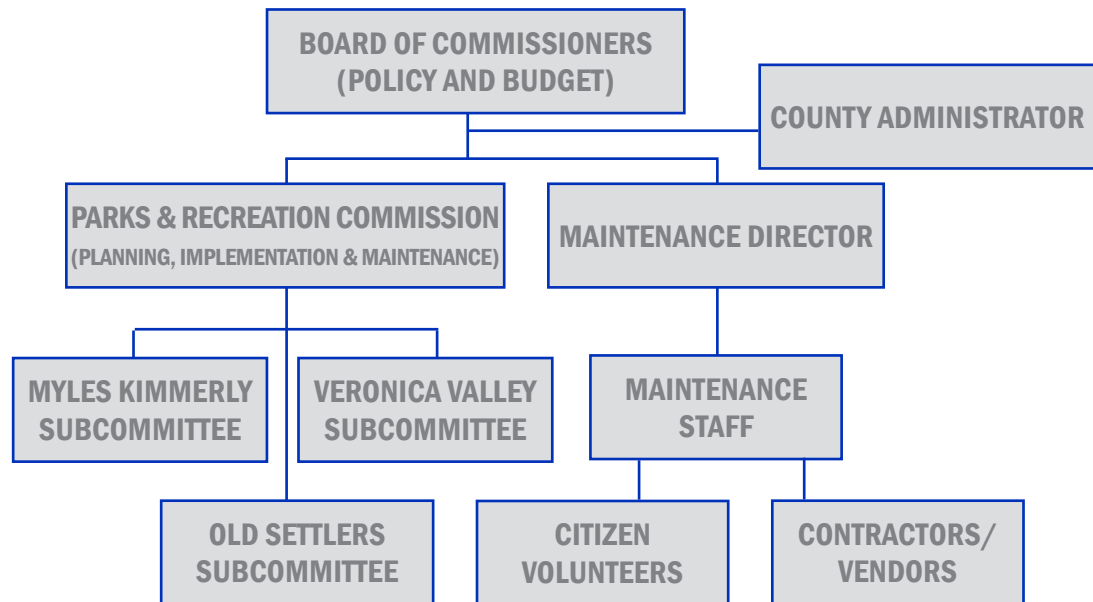






## *Administrative Structure*

Planning and administration of recreational programs and facilities are derived from the interaction and cooperation of the following entities, with the public engaged at all levels:



A seven-member elected Board of County Commissioners governs Leelanau County. The Board is provided with professional guidance on policy issues by the County Administrator who also serves as the Chief Administrative Officer and is responsible for the daily operations of the County departments and staff. Other elected positions with a variety of responsibilities also serve the County.

### **PARKS AND RECREATION COMMISSION**

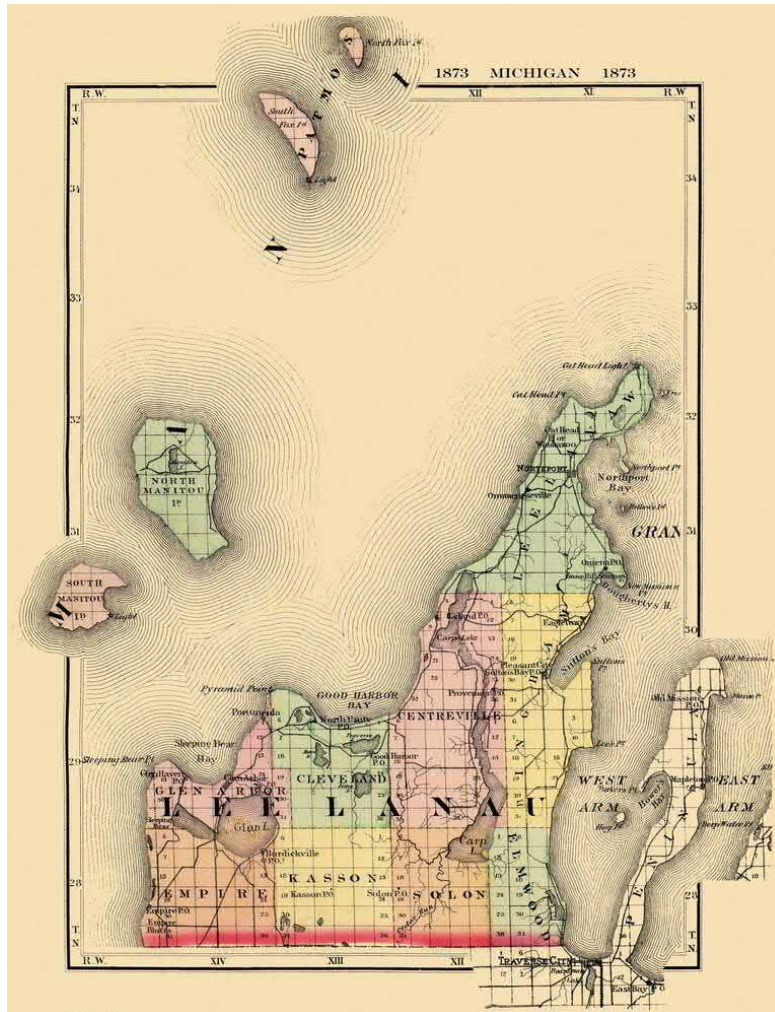
The Leelanau County Parks & Recreation Commission was created by County Board resolution #2003-007 on April 15, 2003, was authorized to provide recommendations and guidance regarding policy issues associated with the parks and recreation facilities and programs in Leelanau County. The Commission consists of up to 10 volunteer members appointed by the County Board of Commissioners, all with varying term lengths. There are member representatives from the Leelanau County Board of Commissioners, the Road Commission, the Drain Commissioner, the Planning Commission, and appointed citizens. This interrelationship of membership provides a direct linkage between the public bodies as well as providing a wealth of information from which to draw upon. They meet on the third Wednesday of every month and are guided in their actions by an adopted set of bylaws. The County Maintenance Department provides staff for park development and maintenance.

## CURRENT YEAR & PROJECTED ANNUAL BUDGETS FOR PARKS OPERATION AND MAINTENANCE

For Fiscal Year 2020, Leelanau County has approved an annual operating budget for operation and maintenance of the County recreational facilities of approximately \$167,000 under the Parks & Recreation Commission budget. This amount was allocated for several categories including salaries and benefits, repair and maintenance, contractual services, and capital outlay. The Parks and Recreation budget has steadily increased over the years.

Throughout the year, the parks have received donations from volunteers in time and money to assist with specific park projects or for maintenance and repairs. An example of effective volunteer support outside of the Parks and Recreation Commission is the Glen Lake Woman's Club, which maintains and schedules the use of the Old Settlers Park Chapel.

The Parks and Recreation Commission works with the school districts and 4-H groups for use of the Myles Kimmerly and 4-H Park for soccer leagues, baseball leagues, and agricultural activities. Myles Kimmerly and the 4-H Park are close to the Glen Lake Community Schools. The Commission also worked with the Leelanau Conservancy on the acquisition of the Veronica Valley Park due to its location in the Lake Leelanau Watershed, and the stream and wetlands that are within the property.







## Recreation Inventory

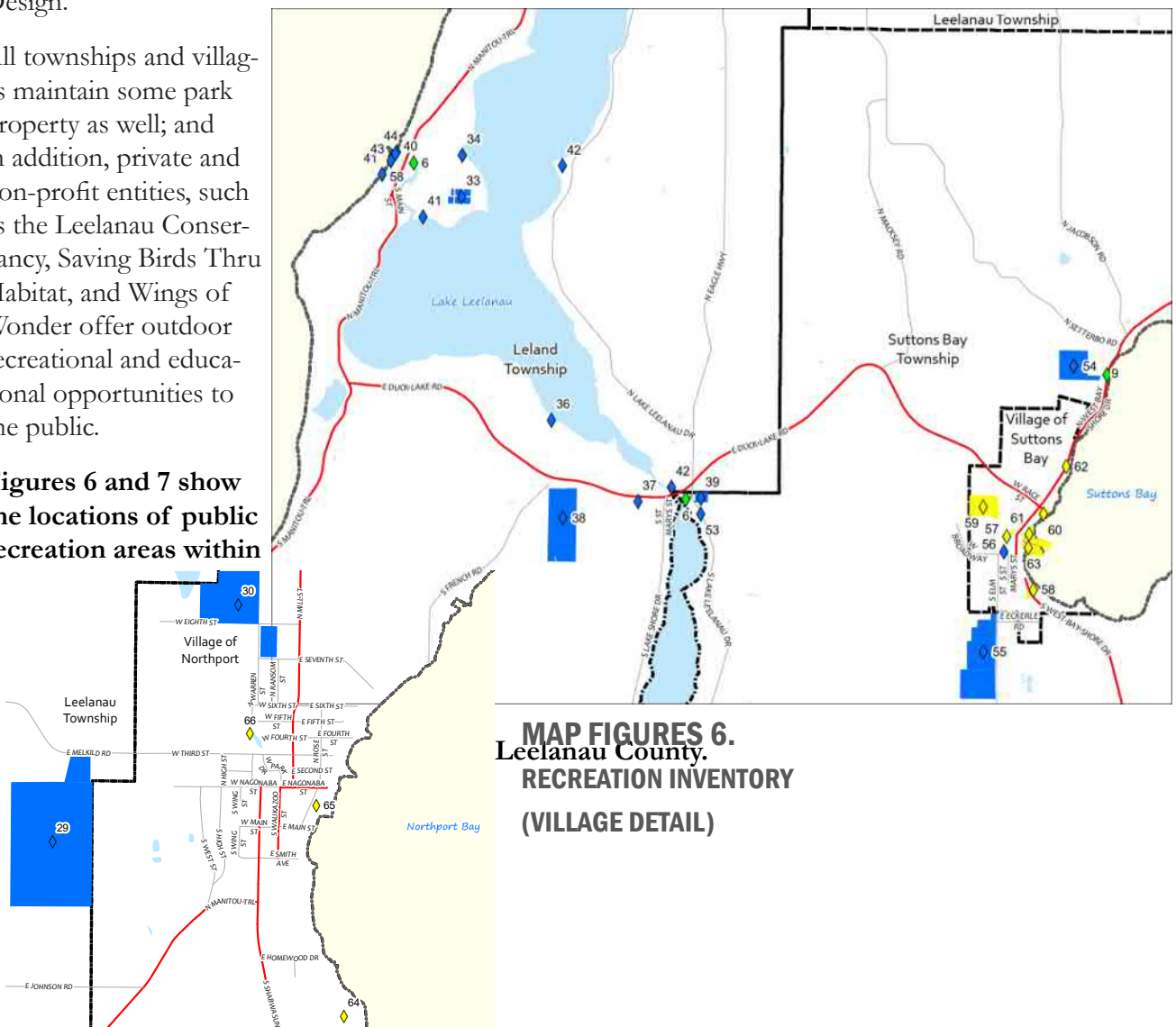
With its hundreds of miles of shoreline, thousands of acres of forest, world-class dunes, and many inland lakes and rivers, Leelanau County has a wealth of recreational opportunities to offer residents and visitors. The County is home to a large portion of the Sleeping Bear Dunes National Lakeshore, as well as the Pere Marquette State Forest and Leelanau State Park. There are three county-maintained parks. Each facility in the following inventory has been compared to the 2010 ADA Standards for Accessible Design and at a minimum given a ranking from 1-5, where 1=none of the site elements meet 2010 ADA Standards for Accessible Design, 2= some, 3=most, 4=all and 5=the facility meets the Principals of Universal Design.

All townships and villages maintain some park property as well; and in addition, private and non-profit entities, such as the Leelanau Conservancy, Saving Birds Thru Habitat, and Wings of Wonder offer outdoor recreational and educational opportunities to the public.

Figures 6 and 7 show the locations of public recreation areas within

## God's County

**LEELANAU COUNTY**  
 Named "One of the Most Beautiful Places on Earth"



**MAP FIGURES 6.**  
**Leelanau County.**  
**RECREATION INVENTORY**  
**(VILLAGE DETAIL)**

# MAP FIGURE 7. RECREATION INVENTORY

Leelanau County,  
Michigan

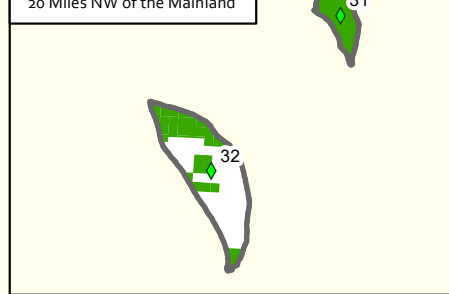


1 inch = 4 miles

This map was created by the Leelanau County Equalization Department, and its use is granted only with explicit department permission. The information displayed is for reference purposes only, and Leelanau County is not liable for any errors that may be found herein.



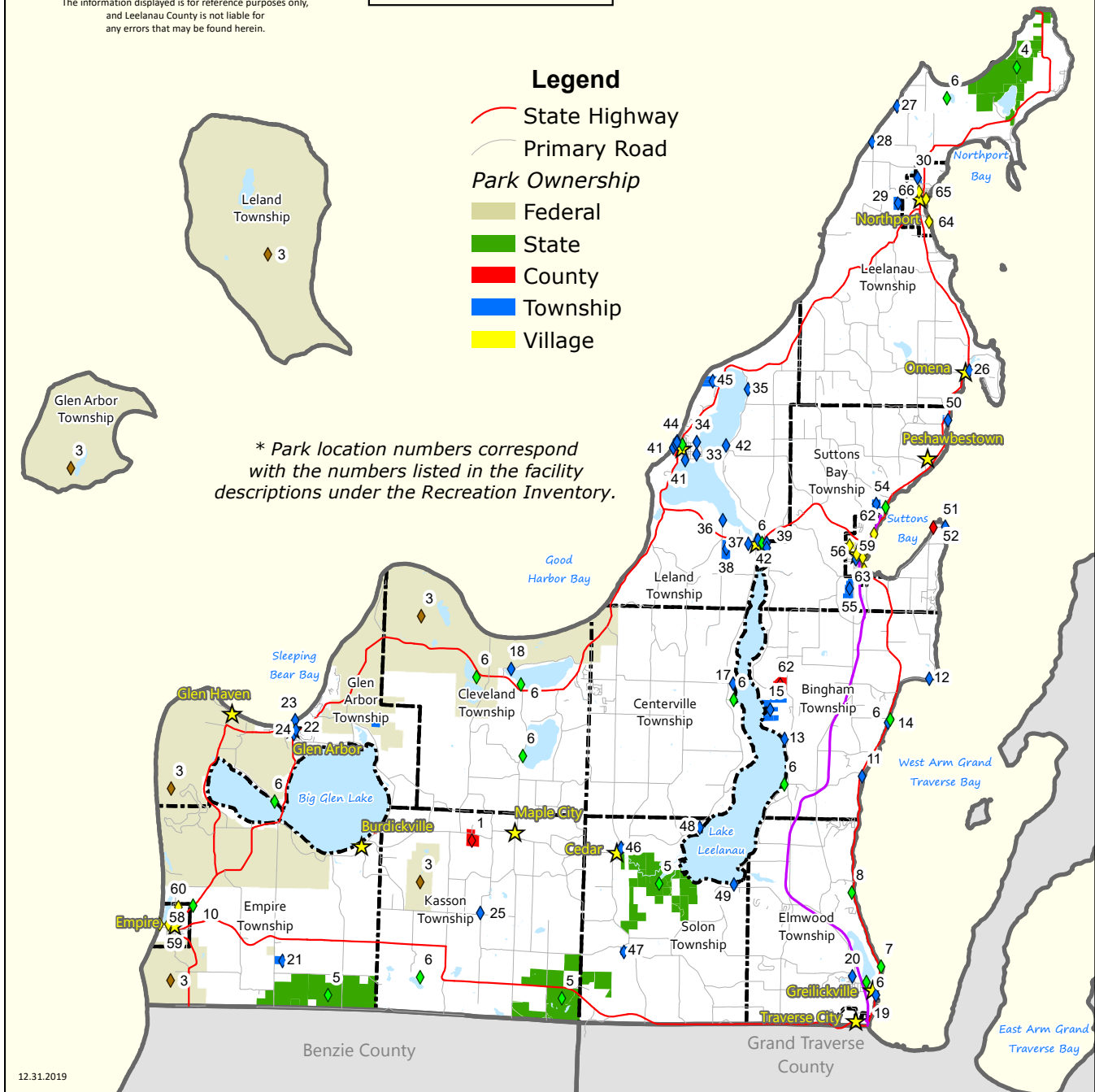
Fox Islands - Leelanau Township  
20 Miles NW of the Mainland



### Legend

- State Highway
- Primary Road
- Park Ownership**
- Federal
- State
- County
- Township
- Village

\* Park location numbers correspond with the numbers listed in the facility descriptions under the Recreation Inventory.



12.31.2019



## MYLES KIMMERLY PARK

Park Type:  
**Community Park**

Property Tax ID#:  
**007-004-013-00**  
**007-009-004-00**

Size:  
**143 acres**

Service Area:  
**NW Michigan**

Accessibility Assessment:  
**Rating = 3**

## MYLES KIMMERLY PARK

### PARK AND RECREATION AREA DESCRIPTION

The Myles Kimmerly Recreation Area which includes the 4-H Park is located on both sides of County Road 616 in Kasson Township. This park's amenities provide the opportunity for team sports, such as soccer matches and baseball leagues; individual sports, such as tennis and disc golf; group gatherings; and nature experiences. Development of this park was made possible by the Cedar Lions Club in 1974.

### HISTORY

Leelanau County purchased the existing "Burke Farm" in 1901 (Site and existing Barn are present on the north side of CR-616) consisting of 120 acres one mile west of Maple City in Kasson Township. 70 acres of improved land and 22 acres of good timber were present. The farm and site became a "poor farm", which was established at the turn of the last century when the State of Michigan mandated that each county must care for its own. In 1906, the two homes were replaced by a single large Victorian house designed by popular Traverse City architect Jens C. Peterson. The original barn burned down in 1911, Peterson designed its replacement, which stands today, more than a century later. It features a 40' x 60' gambrel bank barn with flared eaves and board and batten siding and an intact lower level with nine milking stanchions along the north wall.

### FACILITIES INCLUDE

- a. The Patrick Hobbins Hiking Trail, dedicated in 2003 – ¾-mile in length
- b. Soccer Fields – spring, summer, and fall
- c. Disc Golf Course – 18 holes
- d. County Maintenance Building/Garage
- e. Small Group Picnic Shelters with Picnic Tables (4)
- f. Playground (Requires future safety assessment and inspection) includes; large adult swing, baby swings, merry-go-round, monkey bars (all lack adequate safety surfacing), play activity center/play set, balance beam and sand box.
- g. Basketball Court (1)
- h. Tennis Courts (2)
- i. Driving Range
- j. Ball Diamonds (2) 60-foot based lines with bleachers; dugouts (leagues)
- k. T-Ball field (1) with backstop (aging condition)
- l. Sand Volleyball Court
- m. Pit Toilets (non-ADA compliant)
- n. Water Hydrants (5)
- o. Flagpole, Bike Rack, Aging Grills
- p. Old Shuffleboard Court
- q. Forested Area



## 4-H LIVESTOCK ARENA

### PARK AND RECREATION AREA DESCRIPTION

This park area is across County Road 616 from the Myles Kimmely recreation area. Amenities provide the opportunity for group/organizational activities such as horse shows, children’s agricultural events, and other group/organizational events.

### FACILITIES INCLUDE:

- a. Large Shelter Area/Pavilion with Access Parking and Pad
- b. Show Booth
- c. Barn
- d. Small Barn/Outbuilding
- e. Horse Arenas with Bleachers (2)
- f. Picnic Tables
- g. Benches (3)
- h. Water Hydrants (5)
- i. Historic “Poor Farm” Barn restoration and garden projects (Leelanau County Historical Preservation Society) **(See Appendix A)**

**(SEE MKP FACILITY AERIAL MAP AND IMAGES ON THE FOLLOWING PAGES)**



## 4-H LIVESTOCK ARENA

Aging paddocks are not seeing as much use as programs have fallen off.

Repurposing opportunities exist in this area of the Myles Kimmery Park.



MKP - FORMER POOR FARM VICINITY







**AERIAL IMAGE - PROPERTY BOUNDARY**  
Myles Kimmerly Park

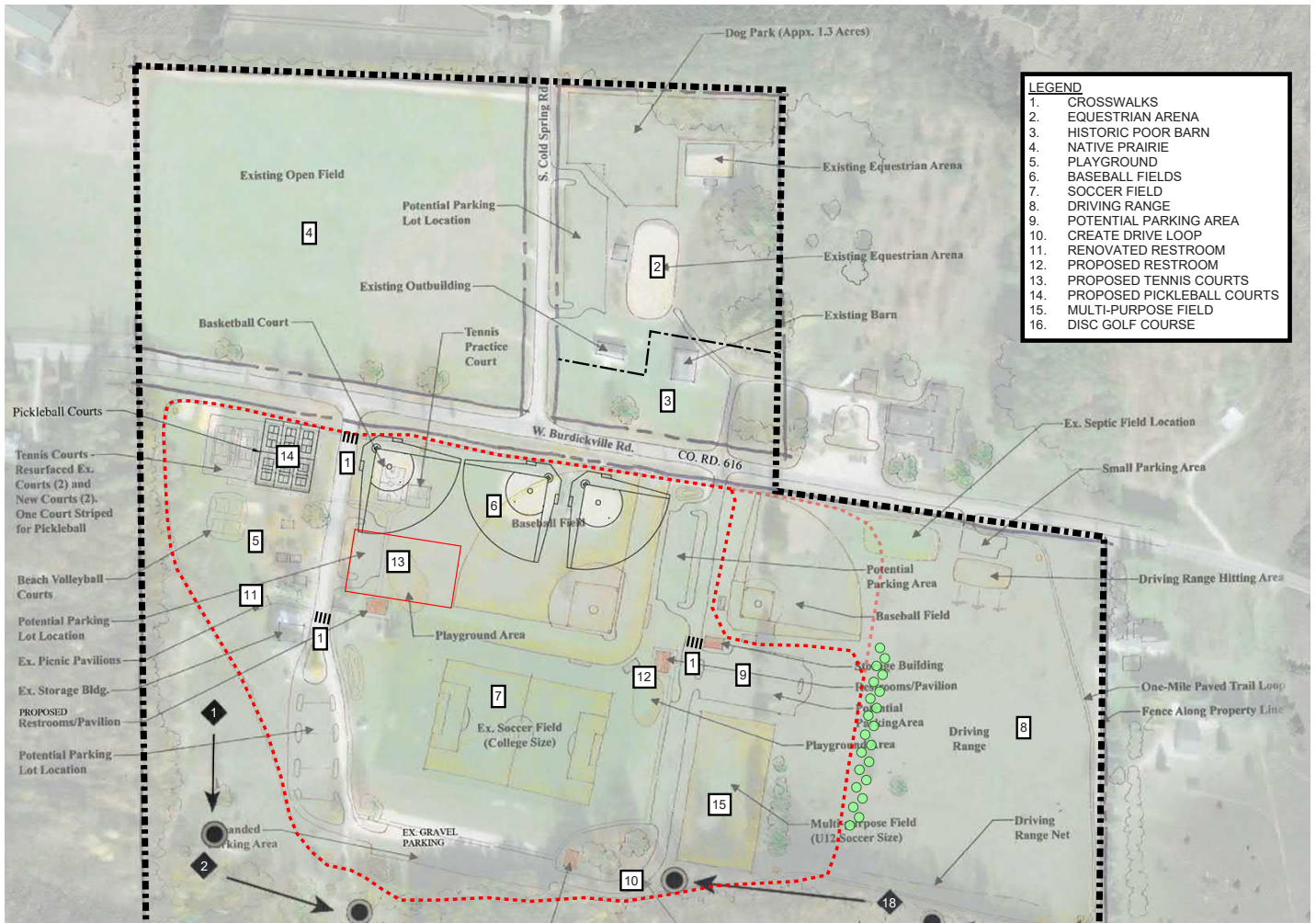


# MKP - AGING RECREATIONAL AMENITIES





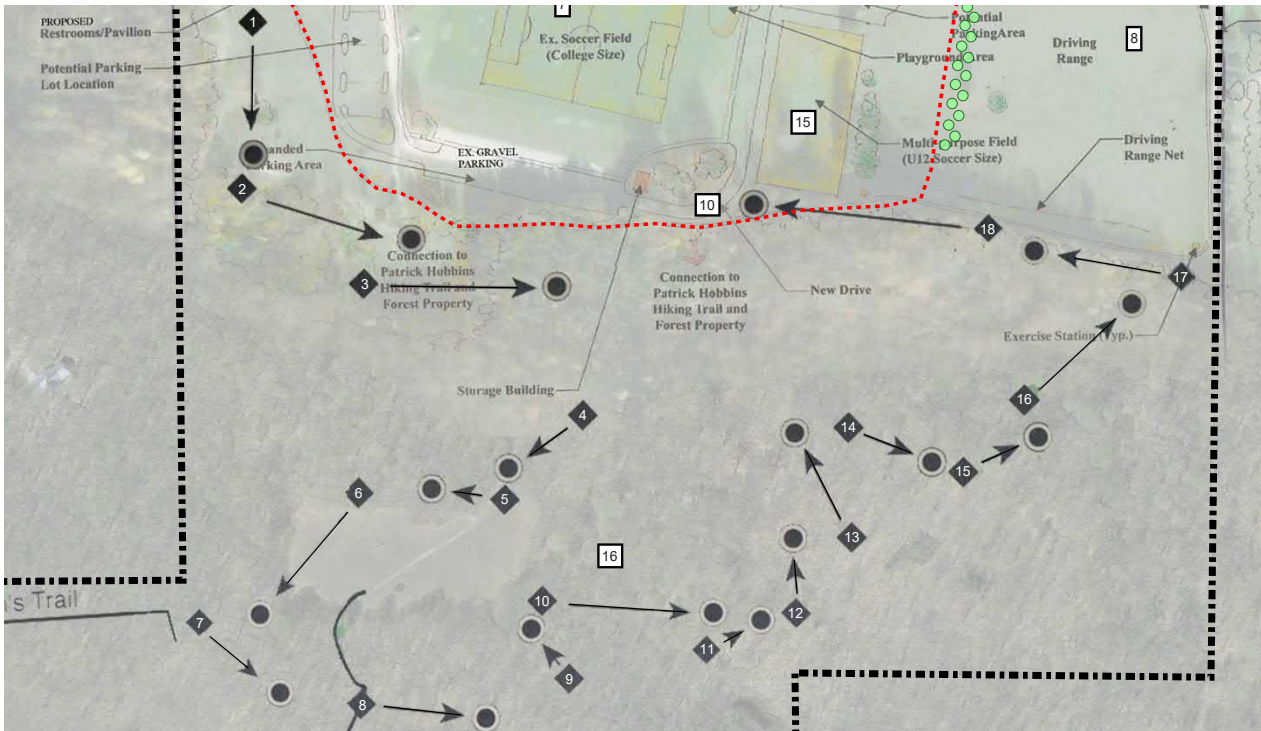




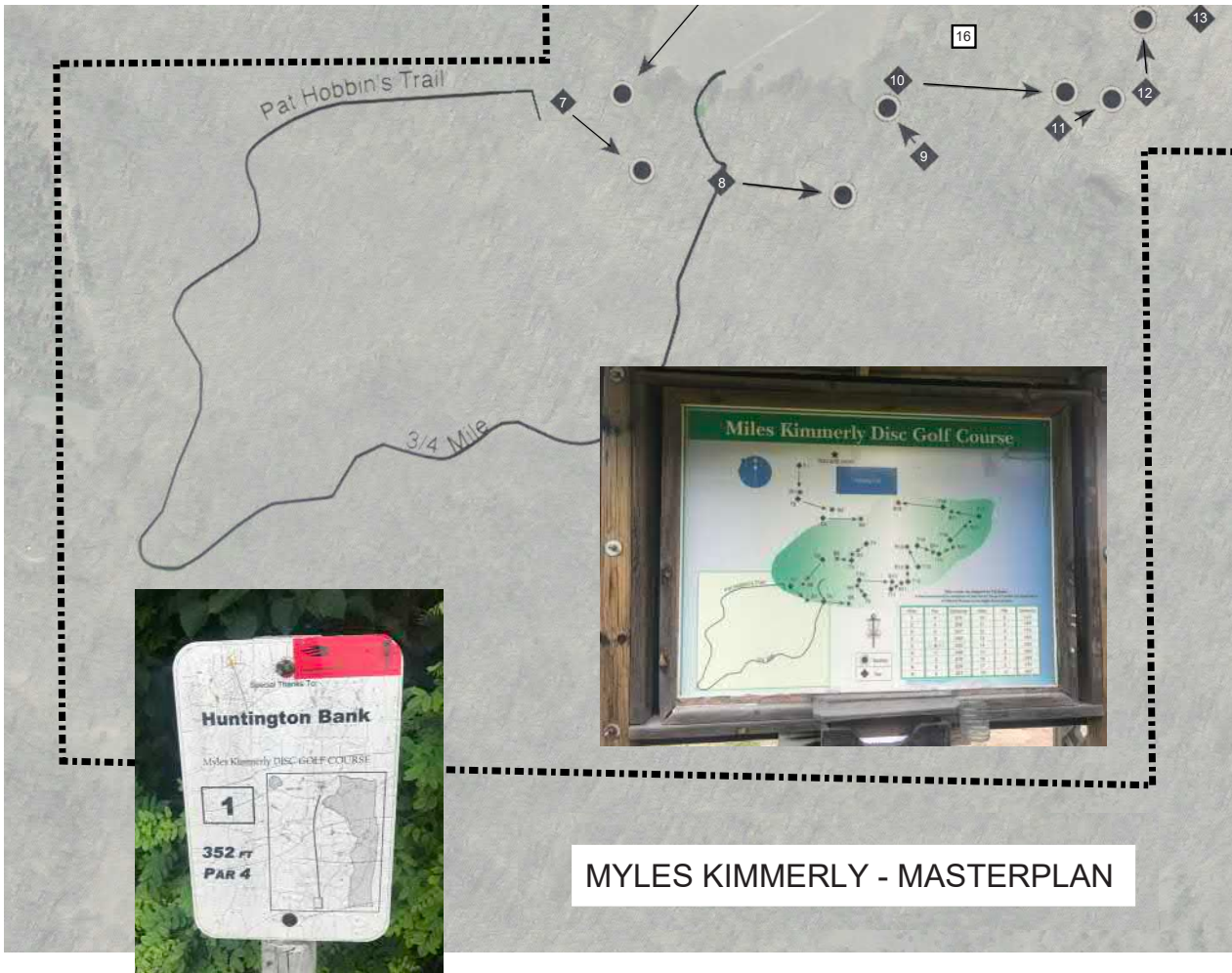
**MKP - NORTHERN PORTION CURRENT PLAN**







**MKP - SOUTHERN PORTION DISC GOLF COURSE**



**MYLES KIMMERLY - MASTERPLAN**

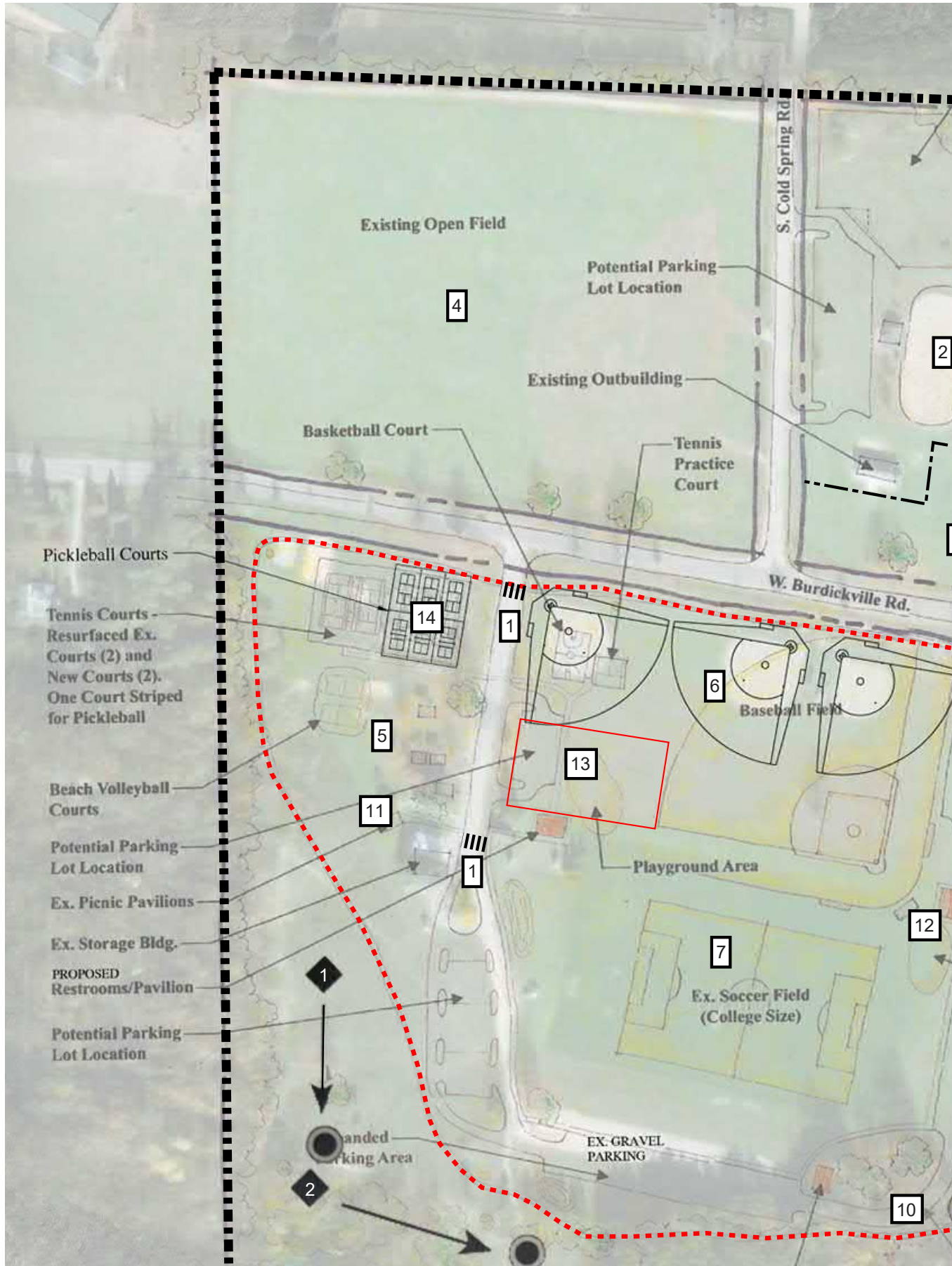




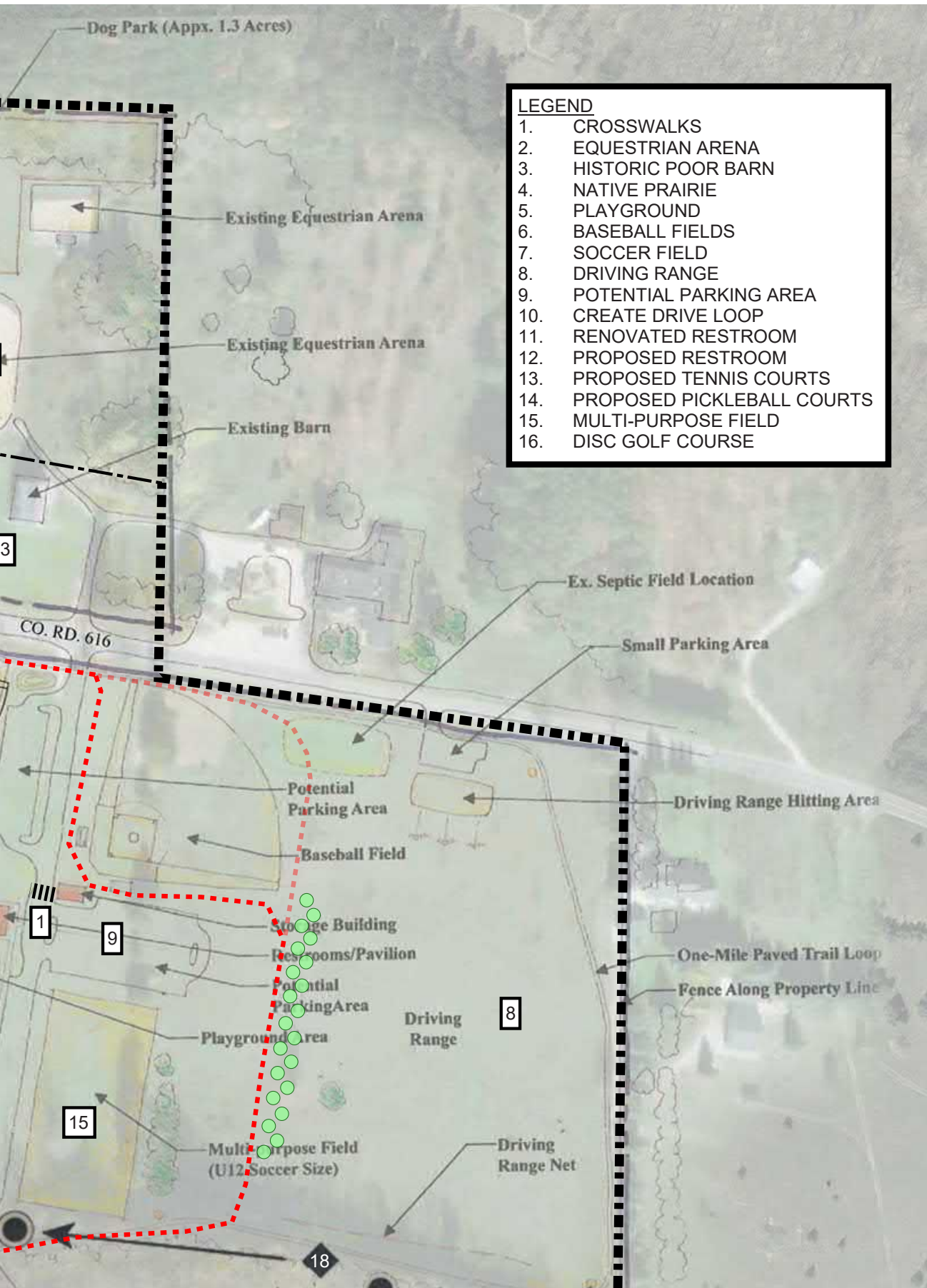
**MKP - DRIVING RANGE (ABOVE), HOLE 1 DISC GOLF (BELOW)**







ARGUMENT (CURRENT PLAN)





## OLD SETTLERS PICNIC GROUNDS

### PARK AND RECREATION AREA DESCRIPTION

Old Settlers Picnic Grounds is located on the southeastern shore of Glen Lake, on S. Dunns Farm Road (County Road 675) in Empire Township. Early settlers established it as a picnic ground in 1892, with access to Big Glen Lake. The chapel located on the grounds of the park is available for use and is coordinated and maintained by the Glen Lake Woman's Club on a first come, first served basis.

### HISTORY

Residents of the logging community of Burdickville held a picnic on August 2, 1893, to honor two elderly pioneers, Kasson Freeman and John Fisher. High attendance at this first picnic inspired the organizers to hold one annually. In 1905, they formed the Old Settlers Picnic Association and began raising funds to purchase a permanent picnic ground. The present Old Settlers Picnic Grounds reflects two purchases. In 1912, with funds from the Association, Leelanau County bought a five-acre parcel adjacent to the Methodist Episcopal Church, which was built in 1896. In 1917, the Association funded the County's purchase of the church, with the Methodists stipulating that the church "shall not be used for dancing." Each August, people came from miles around to attend the Old Settlers Picnic.

### FACILITIES INCLUDE

- a. Chapel/Meeting Room
- b. Fireplaces/Barbecue Stoves (2)
- c. Gazebo with seating
- d. Playground
- e. Boat Launch (Non-motorized)
- f. "Grub Shack"
- g. Picnic Areas with Tables
- h. Grills
- i. Park and Commemorative Benches
- j. Lake overlook deck with interpretive panel (rare Monkey Flower featured)
- k. Barrier-free Pit Toilets (x2) (needs accessible surface from parking)
- l. Potable Water Hydrants (no ADA drinking fountain or bottlefill)

### ACTIVITIES INCLUDE

Weddings  
 July 4th Flag Raising  
 Old Settlers Annual Picnic  
 Swimming



## OLD SETTLERS PICNIC GROUNDS

Park Type:  
**Community Park**

Property Tax ID#:  
**005-001-001-00**

Size:  
**6.5 acres**

Service Area:  
**Entire County**

Accessibility Assessment:  
**Rating = 2**

OSPG - CHAPEL VICINITY AMENITIES







**AERIAL IMAGE - PROPERTY BOUNDARY**  
Old Settlers Picnic Grounds



# OSPG - PARK INFRASTRUCTURE





# Concept Plan Old Settlers Picnic Grounds

Dunns Farm Rd. Maple City, MI



Date: 11/10/21  
 By: [Name]  
 For: [Name]

JACOBS  
 LANDSCAPE ARCHITECTURE & PLANNING, INC.  
 10000 W. GRAND AVENUE, SUITE 100, GRAND RAPIDS, MI 49508  
 TEL: 616.451.1000 FAX: 616.451.1001





## OSPG - GRUB SHACK AND SHORELINE AMENITIES





# Concept Plan Old Settlers' Picnic Grounds

Dunns Farm Rd. Maple City, MI



Date: MARCH 27, 2017  
 REV. APRIL 23, 2017  
 REV. JULY 11, 2017  
 REV. AUGUST 21, 2017  
 REV. SEPT 10, 2017

**NOTES:**

-WALKING PATH MATERIAL TO BE VERIFIED IN FIELD BY LAND ARCH. TO MINIMIZE ROOT DAMAGE.





SEASONAL DOCK

Big Glen Lake

POTENTIAL UA KAYAK LAUNCH LOCATIONS WITH SINGLE ADA SPACE NEAR WATERS EDGE

PROVIDE BETTER SIGNAGE FOR IMPROVED TRAFFIC FLOW.

GRILL

EXIT SIGN

GRILL

GRILL

RELOCATE GRILL AWAY FROM ROAD AND

UPGRADE PLAY EQUIPMENT (POSSIBLY TO RESEMBLE HISTORICAL NATURE) AND SURFACING TO MAKE UA

RE ROOF IN THE FUTURE

CREATE ACCESSIBLE ROUTE TO PORT-A-POT FOR EVENTS

PROVIDE NATIVE BUFFER BETWEEN THE ROAD AND PARK.

County Rd. 675    Dunn's Farm Rd.

UPDATED MASTERPLAN 9/18/2019





## VERONICA VALLEY PARK

Park Type:  
**Community Park**

Property Tax ID#:  
**01-112-010-60**

Size  
**92.3 acres**

Service Area:  
NW Michigan

Accessibility Assessment:  
**Rating = 1**



VV Parks Subcommittee



2008 Acquisition Grant

## VERONICA VALLEY PARK

### PARK AND RECREATION AREA DESCRIPTION

This parcel is located in Bingham Township at the junction of Maple Valley Road and County Road 641, approximately four (4) miles southwest of Suttons Bay and four (4) miles south of the Village of Lake Leelanau in the east central area of the County. The Park is approximately 1/2 mile from Lake Leelanau and 12 miles from the City of Traverse City. The site is characterized by gently rolling hills, open space, wetlands, and forested wetlands that include dense stands of white cedar. The property has three bridges and six ponds. Mebert Creek, a designated trout stream, also winds approximately 2,268 feet through the site. The forested and agrarian views will make this site a peaceful retreat for the passive recreation user.

### HISTORY

The Veronica Valley Park (VVP) property was formerly a family-operated, nine hole golf course that had not been in use for about four years. The acquisition of the Veronica Valley Park was completed in December 2008, with assistance from a Michigan Natural Resources Trust Fund (MNRTF) grant and additional funding from Rotary Charities and Leelanau County.

In 2016, Leelanau County commissioned planning and design work orchestrated by its Veronica Valley Subcommittee to prepare an updated plan for improvements to the park. The concept plan for the proposed passive recreation activities blends safety and barrier-free access improvements. The trail system will reach most of the areas of the park with a high percentage of the trails maintained by a single width of a County mower. Wood-chipped paths and elevated boardwalks, and crushed stone UA pathways leading to viewing platforms in and adjacent to the wetland areas are planned. The updated plan will be resubmitted and will be included in future MNRTF development funding applications.

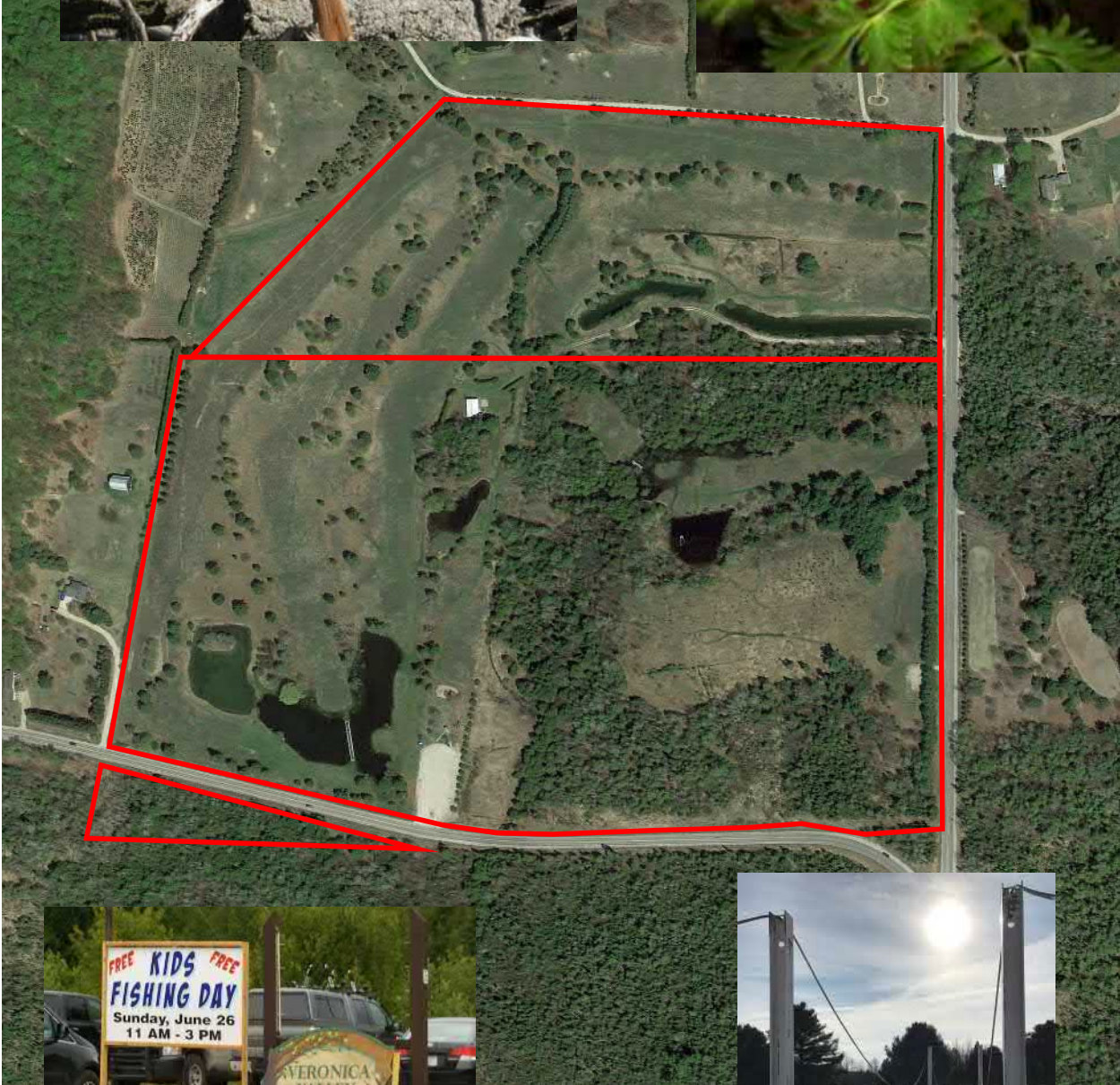
In addition to the trails, picnic and playground areas have been proposed with tables and benches. The two existing parking areas will remain. The nature center/youth fishing center will be in and around a proposed pavilion building. This youth/adult educational center will have the following displays: fishing (both in the stream and ponds), stream ecology, pond ecology, wetland ecology, and birdwatching. This center is envisioned for use by youth groups, county schools, individual visitors, and tourists, and will be a four-season park with birding, cross-country skiing, snowshoeing, and sledding in the winter.



VVP - PARK ENVIRONMENT







**AERIAL IMAGE - PROPERTY BOUNDARY**  
Veronica Valley Park



With the acquisition of the property, a management plan was developed and implemented.

## FACILITIES INCLUDE

- a. Pole barn (24' by 32')
- b. Two water wells
- c. Septic system
- d. Electricity
- e. Drinking water fountain

## ACTIVITIES

- a. Fishing
- b. Hunting
- c. Hiking
- d. Bird Watching
- e. Cross Country Skiing
- f. Snowshoeing
- g. Continued hosting of the Kids' Fishing Day by the Lake Leelanau Lake Association

## YEAR ROUND RECREATIONAL OPPORTUNITIES

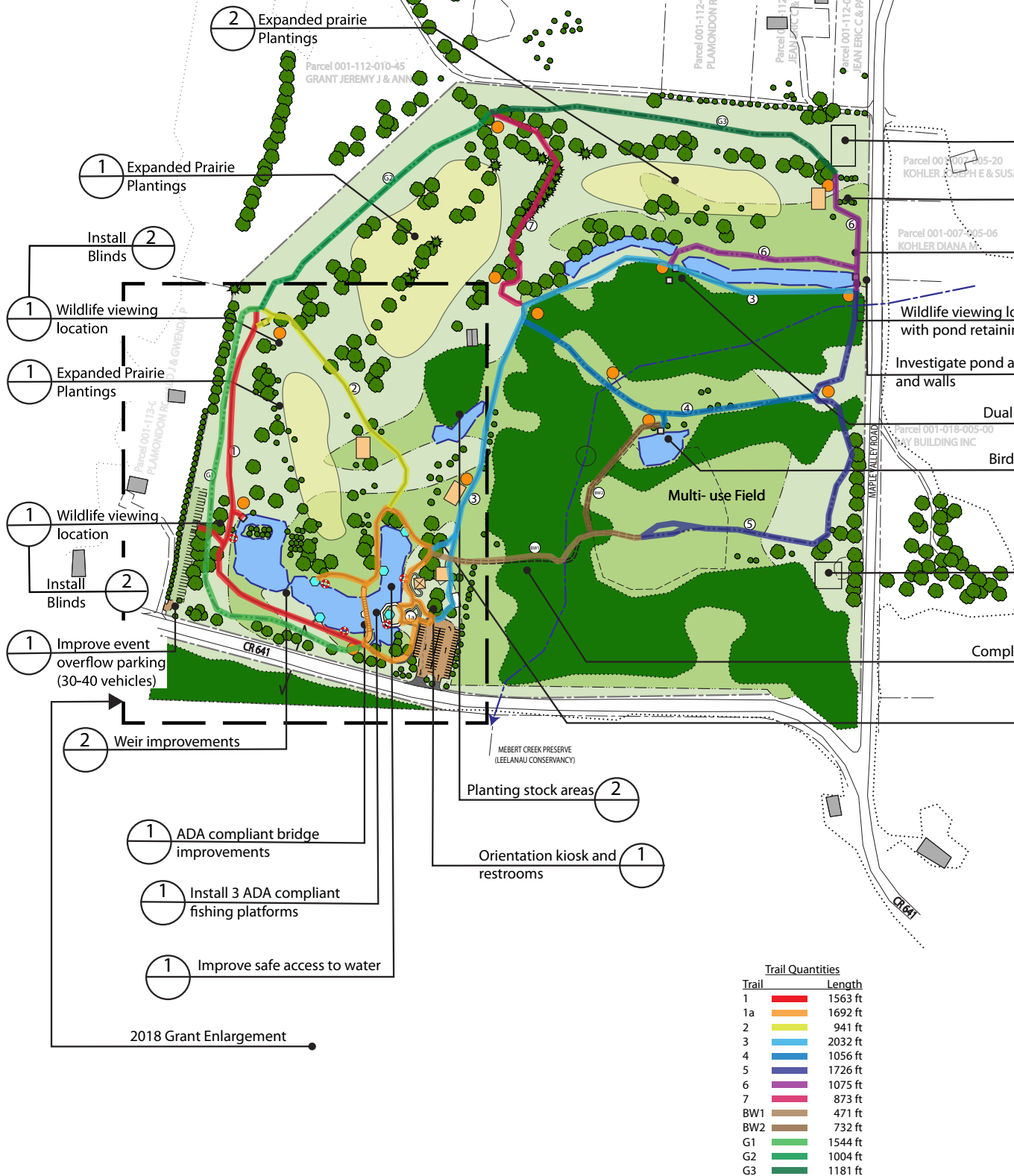


SEE SHEET 3 FOR TRUST FUND 2018 (TF18-018) GRANT APPLICATION ITEMS.

# VERONICA VALLEY MASTER PLAN

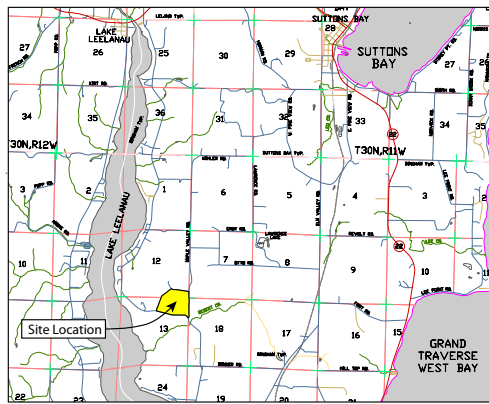
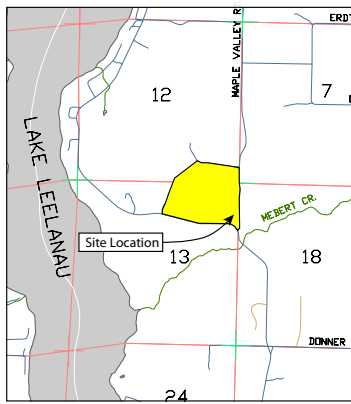
NOTES:

All information is the property of the State of Michigan  
 All locations are approximate  
 Total Site area is approximately 100 acres  
 There is no known utility lines on site and no flood zone





on is derived for Leelanau County, Michigan, and Federal GIS sources.  
 information is approximate.  
 is 92.3 acres +/-.  
 known floodplain delineation for this FEMA mapping available.



VICINITY MAP  
N.T.S.



**Gosling Czubak**  
 engineering sciences, inc.  
 1280 Business Park Dr.  
 Traverse City, Michigan  
 231-946-9191 phone  
 info@goslingczubak.com  
 www.goslingczubak.com

CIVIL ENGINEERING  
 SURVEYING  
 ENVIRONMENTAL SERVICES  
 GEOTECHNICAL  
 CONSTRUCTION SERVICES  
 DRILLING  
 LANDSCAPE ARCHITECTURE

- Overflow parking 10 vehicles on gravel **3**
- Picnic shelter **3**
- ADA compliant trail improvements **1**
- Location integral **1**
- Access **2** Improve safe access to waters' edge **2**
- Birding Location **1**
- Fishing Location **1**
- Improve overflow Parking by 10 vehicles **1**
- Trail connection **2**
- Education Center **3**

CONCEPT PLAN

Purpose of the Plan

The purpose of the Veronica Valley Concept Plan is to help establish the goals and improvements that will lead to a successful sustainable, passive regional park. The design takes into consideration the site's sensitive environment, conservation needs, and high educational potential. The program also considers the needs of regional users and tourists who may use this unique park.

The Process

The process for formulating the plan included a site visit with staff, a Landscape Architects' site inventory and analysis of the property, a public workshop, setting by the Leelanau Veronica Valley subcommittee, and presentation to the Leelanau Recreation Committee.

The public workshop gathered information from regional residents on existing and potential uses, and areas that they felt needed special consideration.

Design Goals

With an inventory and analysis of current site features, staff insight into site features and current initiatives, and public input into desired uses, goals for future uses could be established. The goals established by this process are:

- Create a sustainable park that reduces overhead through a balance of comprehensive planning, maintenance, conservation, environmental restoration, and tourism.
- Seek a balance between users, uses, and stewardship that promotes environmental stabilization of the park and the regional watershed.
- Explore uses that can contribute to continued use of Veronica Valley as a passive park.
- Create a park that can provide for programs environmental and cultural education.
- Identify elements that can be supported via community funding and grant programs.
- Assess program priorities and conflicting uses.

Recommendations

Design recommendations are identified in this concept plan, including a proposed implementation phase. They are:

Phase 1:

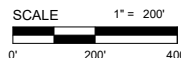
1. Update and augment the current signage program. Include both directional and education signage and format select signs for the hearing impaired.
2. Acquire a wetlands delineation to protect sensitive lowlands environment. (if required)
3. Investigate landmark bridge structure for ADA access and structural safety. (as required)
4. Continue to invest in the experimental prairie plantings to reinforce opportunities for a strong birding program. Diversify plantings to encourage success.
5. Design and install bird and wildlife observation areas.
6. Install orientation kiosk that details heritage and park goals.
7. Maintain wildlife corridors where currently identified.
8. Obtain pond detail including topography, depth, retaining wall condition, inlet, outlet elevation, and biological condition to provide a base for safety improvements.
9. Reach out to Mebert Creek Preserve and investigate opportunities to join education opportunities via educational trail. Research Leelanau Comprehensive Plan and Conservancy requirements for connection opportunities.
10. Obtain wetland permits for lower pond and wetland improvements.
11. Design and construct ADA trail system.
12. Initiate safety improvements to ponds including natural landings for barrier edges, fishing access at natural grades, and strategic plantings to create view corridors.
13. Improve overflow parking.

Phase 2:

1. Obtain wetland permits for the upper ponds and lowland trail enhancements. (as required)
2. Install upper pond improvements.
3. Seek funding sources for Mebert Creek Preserve trail connections.
4. Investigate night lighting.
5. Design and install more bird and wildlife observation areas.
6. Estimate need for permanent public restrooms.
7. Evaluate and install picnic pavilions where needed.
8. Continue signage program.
9. Define, delineate, and establish a planting stock area to augment a regional birding environment. Include educational signage detailing the program.

Phase 3:

1. Construct trail lighting system as needed.
2. Continue assistance in Mebert Creek Trail connections and program.
3. Design and construct public restrooms.
4. Create a maintenance program for to evaluate future user needs and funding.
5. Design pond lower pond weir enhancements.



- LEGEND**
- 1** GRANT PHASE & SCOPE ITEM
  - PROPOSED MOWN TRAIL (ADA TRAIL)
  - PROPOSED CRUSHED STONE (UA TRAIL)
  - PROPOSED ADA BOARDWALK
  - PROPOSED INTERPRETIVE SIGN LOCATION
  - PROPOSED UA OR ADA FISHING PLATFORMS
  - PROPOSED WILDLIFE VIEWING PLATFORMS

No.	Date	By	Revision
02	12-05-17		UPDATED CONCEPT
01	12-04-17		FINAL CONCEPT

**BUILD OUT PLAN**  
**Veronica Valley - Conceptual Plan**  
**Leelanau County, Michigan**

Date Issued: 09/11/2017  
 Date Surveyed:  
 Designed By:  
 Drawn By:  
 Checked By:  
 Scale: AS SHOWN  
 Original sheet size is 24x36

Location:

Project Number:

Sheet:

# VERONICA VALLEY MASTER PLAN ENLARGEMENT

Parcel 001-113-001-10  
PLAMONDON RONALD J & GWENDA P

- Two track vehical access for proposed future overflow parking
- Proposed future porta - potty enclosure/ screen for events (2-4 units)
- Overflow Event Parking (x30-40) (mown grass)
- Consider adding ADA parking pad (3-4 spaces)
- Event driven temp. parking signage location



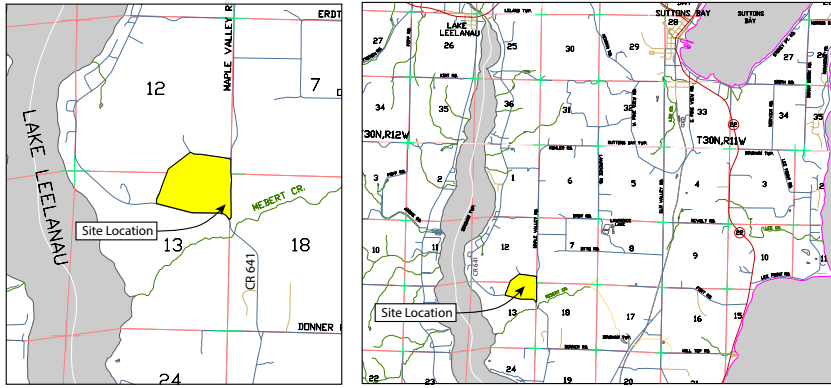
**BRIDGE IMPROVEMENTS**

- Develop accessible bridge approaches (check bridge camber for ADA)

**PARKING UPGRADES**

- Modify entrance with widened boulevard island (one-way loop)
- Create bus-drop loop
- Consider one-way loop (signage)
- Develop paved drive throat (to LCRC standards)
- Add timber rounds/curing to delineate parking
- Add reserved parking with aisles (conc.) & signage (3-4 to exceed ADA ratio)





**Gosling Czubak**  
 engineering sciences, inc.  
 1280 Business Park Dr.  
 Traverse City, Michigan  
 231-946-9191 phone  
 info@goslingczubak.com  
 www.goslingczubak.com

CIVIL ENGINEERING  
 SURVEYING  
 ENVIRONMENTAL SERVICES  
 GEOTECHNICAL  
 CONSTRUCTION SERVICES  
 DRILLING  
 LANDSCAPE ARCHITECTURE

Ex. Maintenance building

**NOTES:**

All information is derived for Leelanau County, State of Michigan, and Federal GIS sources.

All locational information is approximate.

Total Site area is 92.3 acres +/-.

There is no known floodplain delineation for this site and no FEMA mapping available.

**CONCEPT PLAN**

Purpose of the Plan  
 The purpose of the Veronica Valley Concept Plan is to help establish the goals and improvements that will lead to a successful sustainable, passive regional park. The design takes into consideration the sites' sensitive environment, conservation needs, and high educational potential. The program also considers the needs of regional users and tourists who may use this unique park.

The Process  
 The process for formulating the plan included a site visit with staff, a Landscape Architects' site inventory and analysis of the property, a public workshop, vetting by the Leelanau Veronica Valley subcommittee, and presentation to the Leelanau Recreation Committee.

The public workshop gathered information from regional residents on existing and potential uses, and areas that they felt needed special consideration.

Design Goals.  
 With an inventory and analysis of current site features, staff insight into site features and current initiatives, and public input into desired uses, goals for future uses could be established. The goals established by this process are:

- Create a sustainable park that reduces overhead through a balance of comprehensive planning, maintenance, conservation, environmental restoration, and tourism.
- Seek a balance between users, uses, and stewardship that promotes environmental stabilization of the park and the regional watershed.
- Explore uses that can contribute to continued use of Veronica Valley as a passive park.
- Create a park that can provide for programs environmental and cultural education.
- Identify elements that can be supported via community funding and grant programs.
- Assess program priorities and conflicting uses.

Recommendations  
 Design recommendations are identified in this concept plan, including a proposed implementation phase. They are:

- Phase 1: 2018 Grant Proposal
1. Update and augment the current signage program. Include both directional and education signage and format select signs for the hearing impaired.
  2. Acquire a wetlands delineation to protect sensitive lowlands environment. (if required)
  3. Investigate landmark bridge structure for ADA access and structural safety. (as required)
  4. Continue to invest in the experimental prairie plantings to reinforce opportunities for a strong birding program. Diversify plantings to encourage success.
  5. Design and install bird and wildlife observation areas.
  6. Install orientation kiosk that details heritage and park goals.
  7. Maintain wildlife corridors where currently identified.
  8. Obtain pond detail including topography, depth, retaining wall condition, inlet, outlet elevation, and biological condition to provide a base for safety improvements.
  9. Reach out to Mebert Creek Preserve and investigate opportunities to join education opportunities via educational trail. Research Leelanau Comprehensive Plan and Conservancy requirements for connection opportunities.
  10. Obtain wetland permits for lower pond and wetland improvements.
  11. Design and construct ADA trail system.
  12. Initiate safety improvements to ponds including natural landings for barrier edges, fishing access at natural grades, and strategic plantings to create view corridors.
  13. Improve overflow parking.
  14. Design and construct porta-potty enclosure/screen
  15. Evaluate and install picnic pavilions where needed.

Native vegetation planting stock area

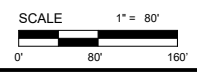
- PROPOSED OPEN-AIR PAVILION**
- Create landform/berms (grass seating - informal amphitheatre)
  - Outdoor classroom opportunity
  - Close proximity to ex. playground
  - Visible from arrival & parking
  - Near pond & demonstration nursery
  - Info board / Wind screens

- Ex. Playground
- Proposed ADA walk to Pavilion
- Berm with ADA Access
- Kiosk interpretive/ site & travel map panel
- Proposed porta-potty enclosure/ screen (2-4 units)
- 6" Conc. Accessible Parking Spaces
- Bus drop-off/ pickup
- Existing gravel lot

**LEGEND**

- 1 PHASE AND GRANT SCOPE ITEM
- EXISTING MOWN TRAIL
- PROPOSED CRUSHED STONE (UA TRAIL)
- FUTURE PROPOSED ADA BOARDWALK
- PROPOSED INTERPRETIVE SIGN LOCATION
- PROPOSED UA OR ADA FISHING LOCATION
- PROPOSED WILDLIFE VIEWING AREA
- EXISTING MATURE TREES
- POND EDGE ENHANCEMENT W/ NATIVE VEGETATION
- POND BANK FISHING
- EXISTING LIFE RINGS
- 4 BENCH LOCATIONS

- LAND COVER**
- EX. FALLOW PARK LAND
  - DEVELOPING TRAIL PRAIRIE
  - EX. POND
  - EX. MOWN AREAS
  - EX. WOODS



No.	Date	By
03	02-02-18	NTS
02	12-05-17	UPDATED CONCEPT
01	12-04-17	FINAL CONCEPT

**2018 GRANT ENLARGEMENT**  
 Veronica Valley - Conceptual Plan  
 Leelanau County,  
 Michigan

Date Issued:	09/11/2017
Date Surveyed:	
Designed By:	
Drawn By:	
Checked By:	
Scale:	AS SHOWN
Original sheet size is 24x36	
Location:	
Project Number:	
Sheet:	

**OTHER PUBLIC PARK FACILITIES LOCATED IN LEELANAU COUNTY**

**FEDERAL FACILITIES**

FACILITY	DESCRIPTION AND ACTIVITIES	ACRES	LOCATION
3 - Sleeping Bear Dunes National Lakeshore	<p>35 miles of shoreline on Lake Michigan; inland lakes; dune formations; beaches; forests; rural historic farm district.</p> <p>Camping:</p> <ul style="list-style-type: none"> <li>• D.H. Day Campground</li> <li>• Group Campground</li> <li>• Rustic/Backcountry</li> </ul> <p>Activities: hiking, swimming, hunting, cross-country skiing, driving tours, interpretive center with auditorium, interpretive programs, snowshoeing, birdwatching, wildflowers, scenic views; Port Oneida Rural Historic District</p>	45,854	<p>Southwest portion of Leelanau County</p> <p>South Manitou &amp; North Manitou Islands</p>

**STATE FACILITIES**

<b>MICHIGAN DEPARTMENT OF NATURAL RESOURCES</b>			
FACILITY	DESCRIPTION AND ACTIVITIES	ACRES	LOCATION
4 - Leelanau State Park	<p>Grand Traverse Lighthouse and Museum; rustic campground with 42 campsites along Lake Michigan; two mini cabins (each with room to sleep four); a picnic pavilion with tables and outside grills; playground area; pit toilets; 8.5 miles of hiking trails, bird watching, cross country skiing, snowshoeing trails; designated areas of hunting; sand dunes; woodlands; an inland lake; an overlook of Lake Michigan and the Fox Islands; and a pristine section of the Cathead Bay/ Lake Michigan shoreline</p>	1,300	<p>The Leelanau State Park features sand dunes and woodlands and is located at the extreme northern edge of the County, north of Northport near Woolsey Airport.</p>
5 - Pere Marquette State Forest	<p>The Pere Marquette State Forest encompasses lands in the upper lower peninsula on the western side of the state. Counties within the Pere Marquette, are: Leelanau, Benzie, Grand Traverse, Kalkaska, Manistee, Wexford, Missaukee, Mason, Lake, Osceola, Oceana, Newaygo and Mecosta.</p>	5,000	<p>Empire, Kasson, and Solon Townships</p>



MICHIGAN DEPARTMENT OF NATURAL RESOURCES			
FACILITY	DESCRIPTION AND ACTIVITIES	ACRES	LOCATION
6 - Boat/Fishing Access Sites	<ol style="list-style-type: none"> <li>1. South Lake Leelanau – east side</li> <li>2. Cedar Lake boat launch</li> <li>3. Leland River: boat launch, parking, picnic tables</li> <li>4. South Lake Leelanau Narrows, boat launch, parking</li> <li>5. Glen Lake</li> <li>6. Grand Traverse Bay - boat launch, parking</li> <li>7. South Lake Leelanau - West side boat launch, dock and parking</li> </ol>	approximately ½ to 1 acre in size per site	<ol style="list-style-type: none"> <li>1. West end of Bingham Road in Bingham Twp.</li> <li>2. Off Cherry Bend Road in Elmwood Township</li> <li>3. Leland in Leland Twp. next to the Bluebird.</li> <li>4. Off Co. Rd. 641 in Suttons Bay Twp.</li> <li>5. At Day Forest Road and M-22 in Glen Arbor Twp.</li> <li>6. At Hilltop Rd. in Bingham Township</li> <li>7. 1 Mile south of Hohnke Rd. on CR 643</li> </ol>

MICHIGAN DEPARTMENT OF TRANSPORTATION			
FACILITY	DESCRIPTION AND ACTIVITIES	ACRES	LOCATION
7 - Roadside Park	Access to West Grand Traverse Bay/Lake Michigan		West Grand Traverse Bay/Lake Michigan off of M-22 in Elmwood Township
8 - Roadside Park	Picnic table; access to West Grand Traverse Bay/Lake Michigan		West Grand Traverse Bay off M-22 near Crain Hill Road in Bingham Township
9 - 45th Parallel Park	Grand Traverse Bay/Lake Michigan; water access, swimming, picnic table	1.5	M-22 north of the Village of Suttons Bay in Suttons Bay Township
10 – Scenic Overlook	Picnic tables		North of Empire on the west side M-22 in Empire Township
Leelanau Scenic Heritage Route	Driving tours; scenic views; agri-tourism; villages, historical sites	60 miles	Countywide: M-22, M-109, M-204

**TOWNSHIP FACILITIES**

BINGHAM TOWNSHIP			
FACILITY	DESCRIPTION AND ACTIVITIES	ACRES	LOCATION
11 - Boughey Park	West Grand Traverse Bay/Lake Michigan frontage; swings, picnic tables, grills, pavilion		East end of Bingham Road (CR 618)

# Recreation Inventory

<b>BINGHAM TOWNSHIP</b>			
<b>FACILITY</b>	<b>DESCRIPTION AND ACTIVITIES</b>	<b>ACRES</b>	<b>LOCATION</b>
12 - Hendryx Park	Leased from the Leelanau County Road Commission for 99 years; West Grand Traverse Bay/Lake Michigan frontage/sandy shore, parking, grill, picnic table, restrooms		Lee Point Road
13 - Bingham Township Park	South Lake Leelanau frontage; swimming, picnic tables, grills, changing house, restroom facilities, basketball court, trash receptacles		Park Road
14 - Groesser Park	West Grand Traverse Bay/Lake Michigan frontage; sandy shore, scenic view		Off M-22 near Hilltop Road
15 - Mebert Creek Natural Area	East shore of Lake Leelanau; wetlands that may be used for hiking and exploring	155	End of Donner Road
16 - RexDobson Ruby Ellen Farm (501c.3)	Historic farm preservation cultural and historical site offering educational programs; gift shop; special events; National Register of Historic Places	90	Center Highway (CR 633) at Shady Lane Rd.

<b>CENTERVILLE TOWNSHIP</b>			
<b>FACILITY</b>	<b>DESCRIPTION AND ACTIVITIES</b>	<b>ACRES</b>	<b>LOCATION</b>
17 - Centerville Township and Boat Launch	On Lake Leelanau; boat launch, dock, two pavilions with tables, porta-johns in the summer		End of Hohnke Road (CR 620)

<b>CLEVELAND TOWNSHIP</b>			
<b>FACILITY</b>	<b>DESCRIPTION AND ACTIVITIES</b>	<b>ACRES</b>	<b>LOCATION</b>
18 - Cleveland Township Park	Little Traverse Lake access; picnic area	2	Northwest side of Little Traverse Lake Road

<b>ELMWOOD TOWNSHIP</b>			
<b>FACILITY</b>	<b>DESCRIPTION AND ACTIVITIES</b>	<b>ACRES</b>	<b>LOCATION</b>
19 - Greilickville Harbor Park	Marina with deep water launch capability, contracted and transient boat slips and buoys; beach area, covered picnic facilities with grills, playground equipment	9	West Grand Traverse Bay/ Lake Michigan off M-22
20 - Cherry Bend Community Park	Covered picnic facilities with grills, playground equipment, tennis courts, soccer, volleyball, baseball field	14.5	Cherry Bend Road (CR 633) and Lincoln Rd. by Township Hall



<b>EMPIRE TOWNSHIP</b>			
<b>FACILITY</b>	<b>DESCRIPTION AND ACTIVITIES</b>	<b>ACRES</b>	<b>LOCATION</b>
21 - Empire Township Park	Picnic shelter, public campgrounds	80	County Road 677 south of M-72 and north of Beeman Road

<b>GLEN ARBOR TOWNSHIP</b>			
<b>FACILITY</b>	<b>DESCRIPTION AND ACTIVITIES</b>	<b>ACRES</b>	<b>LOCATION</b>
22 - Glen Arbor Township Park	1 full and 2 half Basketball courts, 4 tennis courts, 3 pickleball courts, outdoor exercise equipment, 2 picnic pavilion areas, accessible children's playground, public restroom, and walking trail		Southeast corner of State Street and M-22
23 - Glen Arbor Boat Ramp	Boat launch		Lake Michigan at the end of Manitou Blvd.
24 - Garden Park	Restrooms; information kiosk (seasonal); native planting gardens; donor brick walks and sitting areas		Lake St. off M-22 in the business district

<b>KASSON TOWNSHIP</b>			
<b>FACILITY</b>	<b>DESCRIPTION AND ACTIVITIES</b>	<b>ACRES</b>	<b>LOCATION</b>
25 - Kasson Township Park	Playground, tot lot, picnic area		At the Township Hall on Kasson Center Road and Newman Road

<b>LEELANAU TOWNSHIP</b>			
<b>FACILITY</b>	<b>DESCRIPTION AND ACTIVITIES</b>	<b>ACRES</b>	<b>LOCATION</b>
26 - Omena Beach	Omena Bay of West Grand Traverse Bay/Lake Michigan with 100 feet of sand beach; unsupervised swimming, playground area, picnic tables, a vault toilet		Omena off M-22 on Omena Point Road
27 - Christmas Cove Park	Lake Michigan with 200 feet of sand beach; unsupervised swimming; picnic tables, a vault toilet		Christmas Cove Road
28 - Peterson Park	Lake Michigan with 1,000 feet of beach frontage; stairway to beach; scenic overlook; 25 picnic tables, 25 outdoor grills, play equipment, volleyball area, pavilion with 6 tables and two large grills, well water, vault toilets		Peterson Park Road end

# Recreation Inventory

<b>LEELANAU TOWNSHIP</b>			
<b>FACILITY</b>	<b>DESCRIPTION AND ACTIVITIES</b>	<b>ACRES</b>	<b>LOCATION</b>
29 - Braman Hill Recreation Area	Scenic overlook, picnic tables, outdoor grills, fire pit, drinking fountains, tot lot, basketball courts, 4 tennis courts, skateboard park with 8 ramps and obstacles with 100 feet of quarter pipe, unsupervised lighted ice rink, sledding hill, warming room, handicap accessible restrooms; Northport Sportsman's Club Shooting Range		West of Northport between Melkild and Johnson Roads
30 - Buster Dame Recreation Field	3 ball diamonds, 4 aluminum bleachers, concession stand, handicap accessible restrooms		Village of Northport
31 - North Fox Island	Currently operated by the Beaver Islands State Wildlife Research Area; Public 3,000 ft. turf airstrip (designation 6Y3)	3.32 sq miles	NW of the tip of Leelanau County
32- South Fox Island	2/3 private - 1/3 public; no ferry service or docks; 5,500 ft. private runway; Historic S. Fox Island lighthouse operated by the Fox Island Lighthouse Assoc. (FILA); Hunting permitted on State land only; Historic cemetery (Source: Wikipedia.com)	5.36 sq miles	NW of the tip of Leelanau County

<b>LELAND TOWNSHIP</b>			
<b>FACILITY</b>	<b>DESCRIPTION AND ACTIVITIES</b>	<b>ACRES</b>	<b>LOCATION</b>
33 - Hancock Field	Softball and baseball diamonds, soccer fields, tennis courts, bleachers, skateboard ramps, grandstand, picnic pavilions, drinking water, parking, concession stands		Union Street in Leland
34 - Nedow's Bay and Bartholomew Park	Lake Leelanau beachfront, lifeguard, docks, grills, firepit, picnic table, boat launch		East Foot of Pearl Street in Leland
35 - John G. Suelzer East Leland Memorial Park	Boat launch, Lake Leelanau beachfront, parking, dock, picnic area, playground, grills, firepit		County Road 641, East side of North Lake Leelanau at the end of Alper's Road
36 - Schneider's Beach	Lake Leelanau, sandy beach, dock, parking, picnic area, grills, firepit, boat launch		End of Popp Road west of Lake Leelanau Village
37 - Grove Park	Tennis courts, picnic tables, shelter, playground, parking, water, basketball court		Gertrude Street south of M-204 in Lake Leelanau Village



<b>LELAND TOWNSHIP</b>			
<b>FACILITY</b>	<b>DESCRIPTION AND ACTIVITIES</b>	<b>ACRES</b>	<b>LOCATION</b>
38 - Provemont Pond Recreation Area	Undeveloped woodland, fishing pond	90	Popp Road south of M-204 in Lake Leelanau Village
39 - Lake Leelanau Baseball Diamond	Baseball field, dugout, parking, water		County Road 641 south of M-204 in Lake Leelanau Village
40 - Lake Michigan Beach Access Sites Road Ends	<ul style="list-style-type: none"> <li>• Cedar Street</li> <li>• Reynolds Street</li> <li>• Thompson Street</li> <li>• Avenue A</li> <li>• North Street</li> </ul>		In Leland Village
41 - Lake Leelanau Access Sites (includes Leland River) Road Ends	<ul style="list-style-type: none"> <li>• Chandler Street</li> <li>• Grand Avenue</li> <li>• Fourth Street: Dock</li> <li>• Court House Street: Picnic tables</li> <li>• River Street: MI DNR boat launch, dock, picnic tables</li> </ul>		In Leland Village
42 - Lake Leelanau Access Sites (includes Lake Leelanau Narrows) Road Ends	<ul style="list-style-type: none"> <li>• Horn Road: Dock</li> <li>• St. Mary's Street: parking, dock, boat launch</li> <li>• East Meinrad Street: boat launch, dock, porta-potty</li> <li>• St. Joseph Street</li> <li>• William Street</li> </ul>		In or near Lake Leelanau
43 - Leland Harbor	Harbor of refuge: accommodates approximately 70 small vessels (more if "rafting up" allowing for short stays); provides fuel and sewage services, local retail stores; boat launch ramp, a picnic area, playground, toilet, shower facilities, boat trailer parking; charter fishing boats; commercial fishing boats; commercial excursion boats and the National Lakeshore ferry concession to the Manitou Islands; will be expanded and improved		At Lake Michigan in Leland
44 - Fishtown	Purchased by the community nonprofit Fishtown Preservation Society, to be preserved for the public; historic fishing village; small shops		Leland River out to Lake Michigan
45 - Clay Cliffs	This 105-acre acquisition by Leland Township includes; hiking trails and observation lookout over Lake Michigan. Managed by the Leelanau Conservancy	105	M-22 North of the Village of Leland

# Recreation Inventory

<b>SOLON TOWNSHIP</b>			
<b>FACILITY</b>	<b>DESCRIPTION AND ACTIVITIES</b>	<b>ACRES</b>	<b>LOCATION</b>
46 - Cedar Community Park	Baseball diamonds, tennis courts, river and play-ground area		Cedar
47 - Joe Vlack Memorial Park	Hiking, picnicking		South Cedar Road (CR 651), 1/2 mile south of Alpine Road
48 – Solon Park	Picnic tables, pavilion, dock, rustic boat launch		CR 643 on Lake Leelanau
49 - Perrins Landing	South Lake Leelanau – south side: dock, ample parking space, boat launch		Off Fouch Road

<b>SUTTONS BAY TOWNSHIP</b>			
<b>FACILITY</b>	<b>DESCRIPTION AND ACTIVITIES</b>	<b>ACRES</b>	<b>LOCATION</b>
50 - Graham Greene Park	Rocky beach frontage on Grand Traverse Bay/ Lake Michigan; swimming, picnicking, walking, grills, tables, toilets, wooded	15	M-22 north of Peshawbestown
51 - Vic Steimel Park	Rocky beach frontage on Grand Traverse Bay/ Lake Michigan; swimming, picnicking, boat launching, grills, trash containers, picnic tables	1	Nanagosa Trail
52 - Lover's Lane	Suttons Bay/Grand Traverse Bay/Lake Michigan; 66 feet of frontage; swimming, water access	.3	Lover's Lane (west end)
53 - Lake Leelanau Access	Swimming, water access	.6	South arm of Lake Leelanau; Old M-204 bridge abutment on CR 641
54 - 45th Parallel Park	Plans to create walking and cross country skiing trails; picnic, scenic overlooks, shoreline access to Grand Traverse Bay/Lake Michigan	43	M-22 north of Suttons Bay
55 - Herman Park	Active recreation including soccer fields, disc golf, tennis courts (x4), pickleball courts (x2) and nature trails, paved accessible pathway around the fishing pond; ADA picnic pavilion, fishing dock; 60'x60' covered events pavilion; Two additional pickleball courts; 2020 improvements planned include: potable water well; grading, turf and irrigation upgrades for the soccer field; parking and site drainage improvements for use areas; Other activities to be enhanced include snowshoeing and cross country skiing; future UA restroom /concessions building	126	Off Herman Road and Center Highway (633)



<b>SUTTONS BAY TOWNSHIP</b>			
<b>FACILITY</b>	<b>DESCRIPTION AND ACTIVITIES</b>	<b>ACRES</b>	<b>LOCATION</b>
56 - Ice Rink Park (located within the Village limits)	Ice rink in the winter and an open park space in the other months	.5	Corner of Broadway and Lincoln Streets

**VILLAGE FACILITIES**

<b>VILLAGE OF SUTTONS BAY</b>			
<b>FACILITY</b>	<b>DESCRIPTION AND ACTIVITIES</b>	<b>ACRES</b>	<b>LOCATION</b>
57 - Water Wheel Park	Picnic tables, open field, bike rack, water wheel on creek; shared operations with Suttons Bay Township	.3	St. Mary's Avenue
58 - Sutton Park (South Shore Park)	Suttons Bay/Grand Traverse Bay/Lake Michigan with 300 feet of shoreline: swimming, picnicking, bathroom, picnic shelter, playground		South Shore Drive
59 - Bahle Park	Sledding hill, nature trails, cross country skiing, warming and meeting house	30	West Street
60 - North Park	Suttons Bay/Grand Traverse Bay/Lake Michigan with 1,500 feet of frontage; boat launch, covered pavilion, bathroom, boat parking	4.5	East of the M-22 and M-204 intersection
61 - Village Marina Park Complex	Suttons Bay/Grand Traverse Bay/Lake Michigan with 3,000 feet of frontage; swimming, bath house, boating, walking paths and boardwalks, boat launch and docks (130), fishing, playground	10	End of Adams Street
62 - Fairgrounds Recreation Area	Lighted and fenced fields, restrooms, bleachers, concession building, natural wooded area, parking	4	M-22 north off M-204
63 - Village Coal Dock	Fishing pier, boating, boardwalks, walking path, docking facilities for Inland Seas Education Association Program	2	Off of M-22 end of Dame Street

<b>VILLAGE OF NORTHPORT</b>			
<b>FACILITY</b>	<b>DESCRIPTION AND ACTIVITIES</b>	<b>ACRES</b>	<b>LOCATION</b>
64 - Municipal Bathing Beach	Grand Traverse Bay/Lake Michigan; playground area, volleyball court, pit toilets		Shore Drive
65 - Haserot Waterfront Park	Grand Traverse Bay/Lake Michigan; marina, picnic tables, grills, pier fishing, toilets, boat moorings, swimming, boat launch		Rose Street
66 - Mill Pond	Fishing		Mill Street
67 - Northport Creek	Nine Hole Public Golf Course		8th Street

VILLAGE OF EMPIRE			
FACILITY	DESCRIPTION AND ACTIVITIES	ACRES	LOCATION
68 - Lake Michigan Beach Park	Lake Michigan; pavilion, swimming, playground, lighthouse, restrooms, picnic grills, boat launches – South Bar Lake, Lake Michigan		Lake Michigan Drive
69 - James R. Johnson Memorial Park	Lion’s Club; pavilion, restrooms, open space		Reynolds Street
70 - North Park	2 ballfields (one lit field) with backstops and fenced outfields; 4 picnic grills, walking path, access path to the creek, children’s play area, storage building, 2 restrooms, handicapped accessible restroom, tennis courts		Off LaCore Street

**OTHER COMMUNITY AND PUBLIC FACILITIES**

**LEELANAU TRAIL - TRAVERSE AREA RECREATION AND TRANSPORTATION TRAILS, INC. (TART)**

Stretching over 15 miles through the last of the Leelanau County railway corridors, the Leelanau Trail connects Traverse City and Suttons Bay for walking, biking, in-line skating, cross country skiing, and dog sledding. The trail route features rolling hills, lush forests, picturesque orchards, peaceful meadows, and an aquatic medley of streams, lakes, and ponds. The Leelanau Trail is part of USBR 35.

**LEELANAU CONSERVANCY**

Since its founding in 1988, the Leelanau Conservancy has been devoted to protecting the land and water that make the Leelanau Peninsula one of the most unique and beautiful areas in America. The Conservancy has preserved nearly 14,000 acres and created 26 natural areas, 47 miles of stream and lake frontage and more than 20 miles of hiking trails for public enjoyment. The spectacular 721-acre Palmer Woods Forest Reserve near Glen Arbor was opened in February, 2016.

In addition, the Conservancy has worked with over 170 landowners to protect family farms and cherished private lands with legal agreements called conservation easements. These agreements restrict development and protect the land’s most important natural features. The following list are Conservancy properties or preserves. For more information please visit the Conservancy website at <https://www.leelanauconservancy.org>.

DATE ACQUIRED	PROPERTY OR PRESERVE NAME	LOCATION	ACRES
9/20/1990	Leland Village Green	Leland	1
12/17/1991	Whittlesey Preserve	Suttons Bay	20
4/26/1995	Gull Island Bird Sanctuary	Northport	7
1/1/1996	Whaleback Natural Area	Leland	40
12/1/1996	Leland River Preserve	Leland	1
12/17/1996	Mebert Creek-Greeno Preserve	Lake Leelanau	21
5/10/2000	Chippewa Run Natural Area	Empire	110.01



DATE ACQUIRED	PROPERTY OR PRESERVE NAME	LOCATION	ACRES
12/1/2000	Finton Natural Area	Northport	35
5/1/2001	Frazier Freeland Natural Area	Suttons Bay	13
6/4/2004	Lighthouse West Natural Area	Northport	42
6/1/2006	DeYoung Natural Area	Traverse City	84
12/31/2007	Krumwiede Forest Reserve	Maple City	109.77
2008	Jeff Lamont Preserve	Northport	40
4/2/2011	Swanson Preserve	Cedar	96
6/13/2011	Hatlem Creek Preserve	Glen Arbor	20.05
1990 - 2010	Kehl Lake Natural Area	Northport	279
1990 - 2012	Cedar River Preserve	Cedar	440.18
1991 - 1997	Belanger Creek Preserve	Suttons Bay	67.75
1991 - 2008	Soper Natural Area	Northport	80
1996 - 2006	Teichner Preserve	Cedar	41.3
1998 - 2012	Houdek Dunes Natural Area	Leland	337.03
2001 - 2010	Narrows Natural Area	Lake Leelanau	71.2
* For new properties and additional easements in Leelanau County since 2010, refer to the Leelanau Conservancy website and/or contact them.			

**OTHER FACILITIES/ACTIVITIES**

Many other private facilities and activities occur in Leelanau County, which include the Cedar Rod and Gun Club, museums, nature centers, campgrounds, golf courses, downhill and cross country skiing, snowboarding and tubing, conservation clubs, horseback riding, fishing charters, and boat rentals. These can be found in the local phonebooks, websites, chambers of commerce, and visitors’ bureaus. Hunting is available at different parks throughout the County. Please check with the Michigan Department of Natural Resources and National Park Service for rules and regulations on hunting and fishing in each specific township for details.

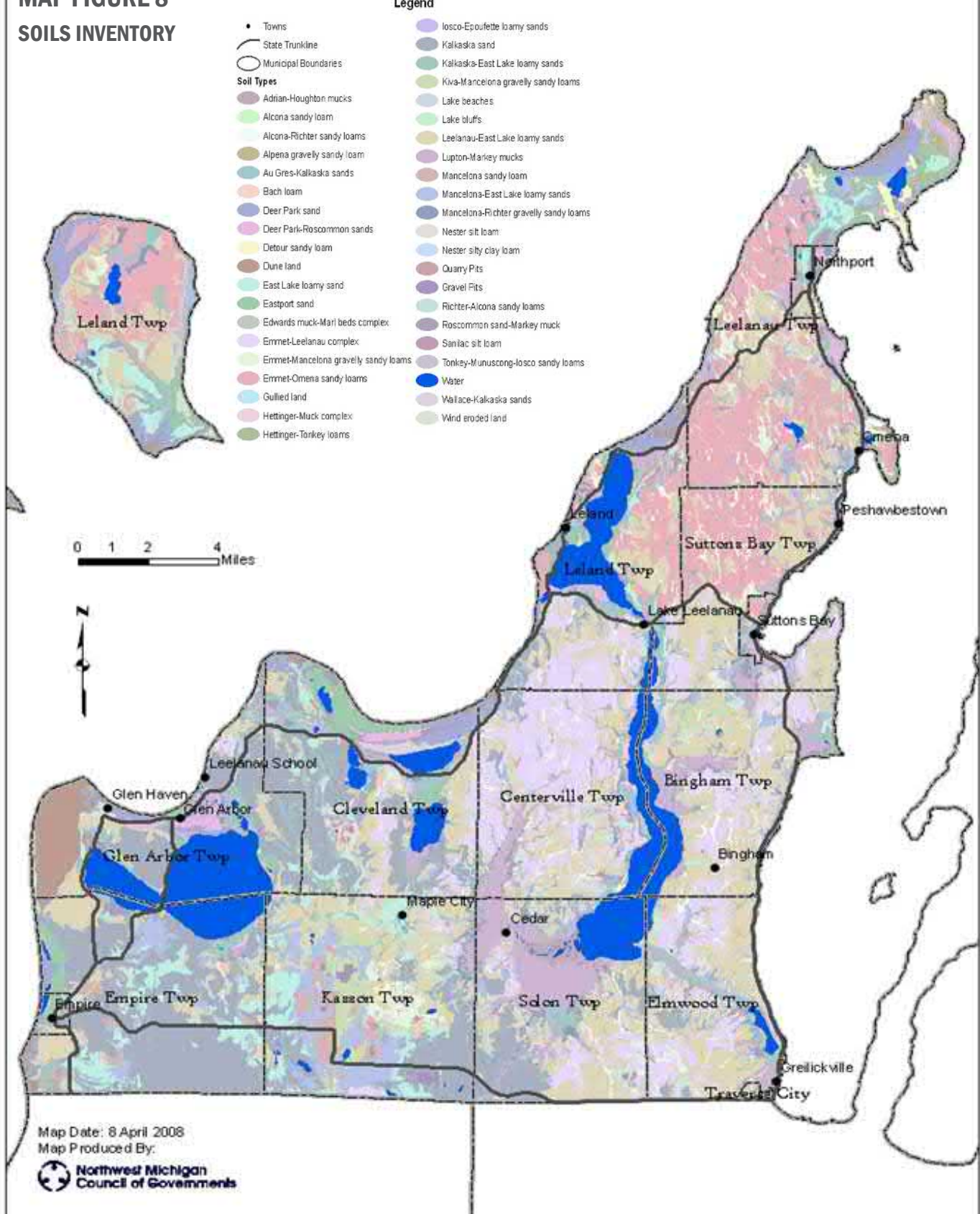
**RESOURCE INVENTORY**

The natural resources of the Leelanau Peninsula are vital to the economic health and sense of well being of area citizens. These natural resources are interrelated biological systems and the primary environmental goal of the County is the protection of unique and sensitive lands and water resources from inappropriate and poorly designed development. This includes unique and prime agricultural lands, as well as sensitive environments like dunes, wetlands, and wildlife habitat.

**Natural Resources:**

- Area in Water = 16,000 acres
- Miles of Great Lakes/Lake Michigan Shoreline = 151
- Forest Lands = 126,900 acres
- Wetlands = 27,412 acres

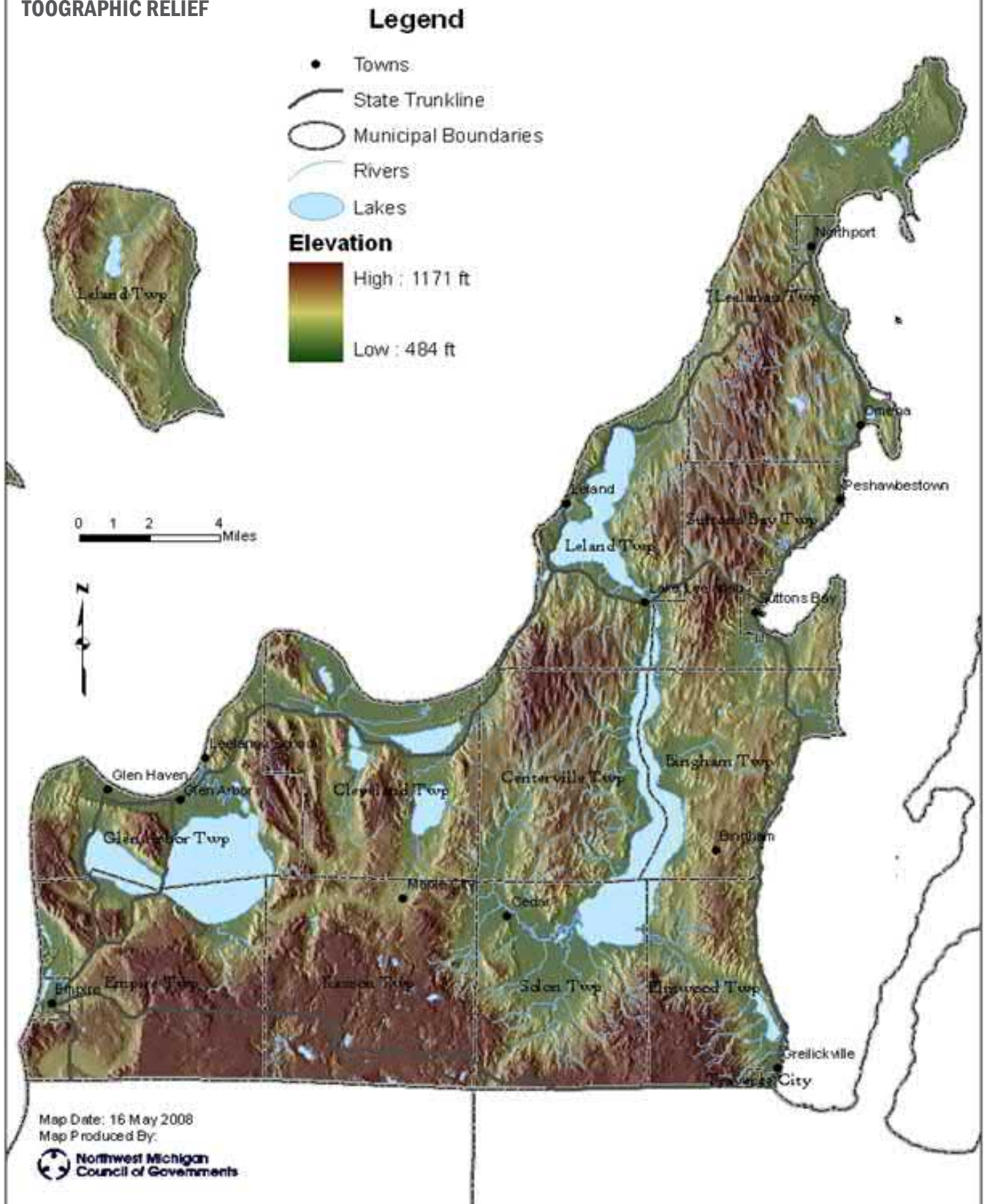
# MAP FIGURE 8 SOILS INVENTORY



Data Source: Michigan Center for Geographic Information, Michigan Geographic Framework Version 7b



**MAP FIGURE 9**  
**TOOGRAPHIC RELIEF**



Data Source: Michigan Center for Geographic Information, Michigan Geographic Framework Version 7b

## PHYSICAL FEATURES

### SOILS

The natural drainage, texture, and slope can affect the suitability of siting recreational areas. There are 40 types of soil found in Leelanau County, with 7 predominate soil classifications. **Refer to Figure 8 Soils and Figure 9 Topography on the previous pages.**

The predominate soils are identified as:

- **Deer Park-Dune Land Association:** Well-drained, strongly sloping to very steep, sandy soils on dunes found in the Sleeping Bear Dunes National Lakeshore in Empire and Glen Arbor Townships, as well as on South Manitou, North Manitou, South Fox, and North Fox Islands.
- **East Lake-Eastport-Lupton Association:** Well-drained and moderately well drained, nearly level to gently sloping sandy soils; and very poorly drained, nearly level, mucky soils; on lake terraces and beach ridges and is found directly adjacent to the vast majority of the shorelines around Glen Lake, Lake Leelanau, the Cedar River, Lake Michigan, and Grand Traverse Bay.
- **Emmet-Omena Association:** Well drained, nearly level to very steep, loamy soils on moraines and is found primarily in Leelanau Township and extending south into northern Suttons Bay and Leland Township.
- **Emmet-Leelanau Association:** Well drained, moderately steep to very steep, loamy and sandy soils on moraines and till plains and can be found in Suttons Bay, Centerville, and southern Leland townships, as well as on North and South Manitou Islands.
- **Kalkaska-East Lake Association:** well drained, moderately steep to very steep, sandy soils on moraines.
- **Kiva-Mancelona Association:** Well drained, nearly level to strongly sloping, gravelly, loamy, and sandy soils on outwash plains located only in central and western Kasson Township.
- **Leelanau-Mancelona Association:** Well drained, strongly sloping to very steep, sandy soils on moraines and found on the steepest topography within Leelanau County. Located in Elmwood, Solon, Kasson, Cleveland, and Centerville townships. Small areas of these soils are located in Suttons Bay, Bingham, and Glen Arbor townships along the steep areas of the lake front.

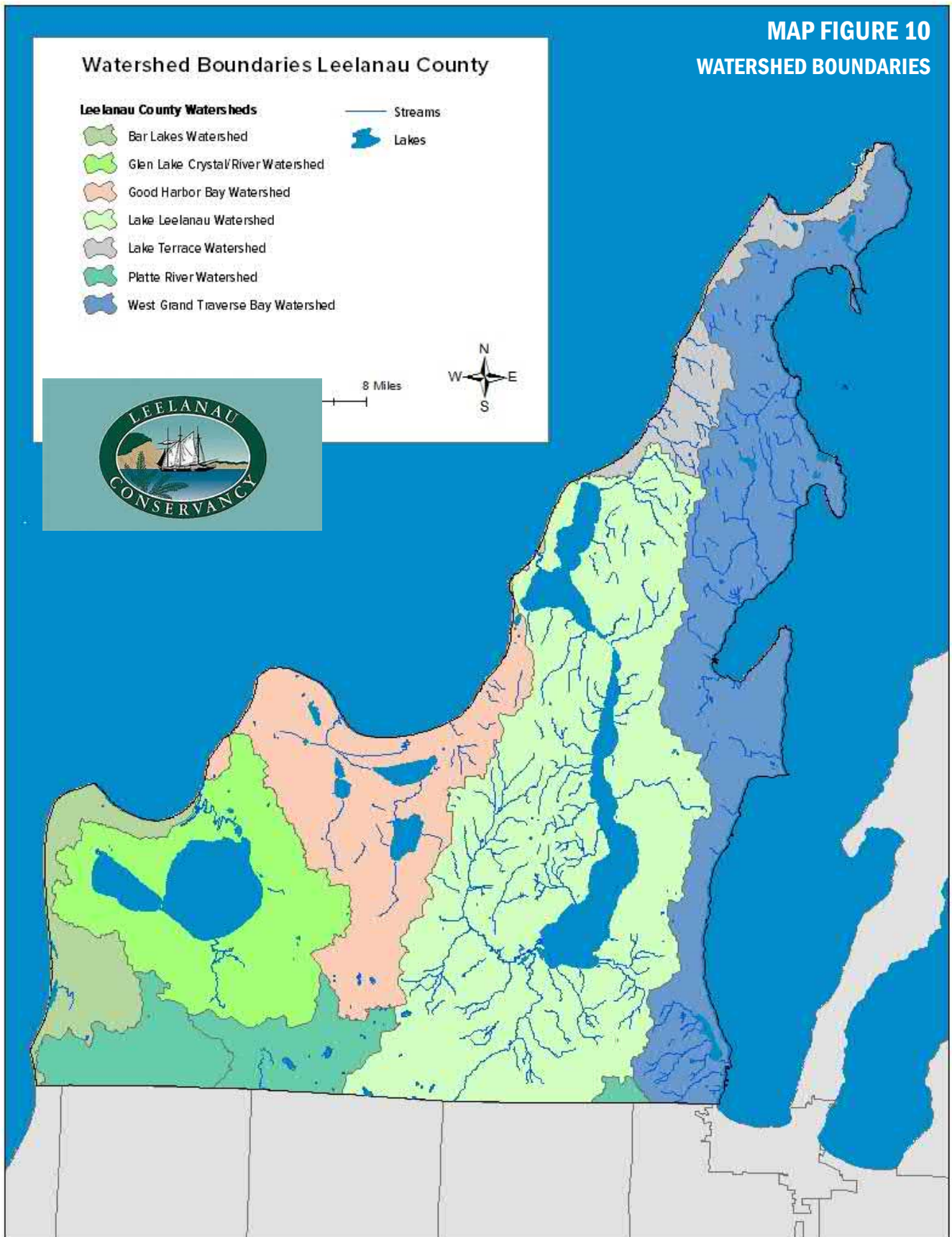
### WATER RESOURCES

As a peninsula, Leelanau County is surrounded by Lake Michigan. In addition to these features, the County contains several inland lakes, high quality rivers, streams, and wetlands. There are 28 inland lakes with 8 of the lakes being 175 acres or more in size, with the largest being Lake Leelanau. Most of the lakes are considered very high quality in terms of biological productivity.

However, these resources are at risk due to shoreline construction, surface water runoff of fertilizers, pesticides, possible on-site wastewater treatment systems, and stormwater runoff. More than two dozen streams and rivers occur in the County that are of high quality, with most of them capable of supporting trout populations. Common threats to the water quality of these streams and rivers include sediment and agricultural chemicals entering the water.



MAP FIGURE 10  
WATERSHED BOUNDARIES



# Recreation Inventory

## WILDLIFE

Leelanau County generally has three habitat types: open land, wooded, and wetland. The vast orchards and croplands provide habitat for wildlife such as woodchuck, red fox, coyote, and certain bird species; for example, meadowlark, pheasant, turkey, sparrows, and hawks. The woodland areas provide cover for whitetail deer, squirrels, raccoon, porcupine, owls, woodpeckers, song birds, and woodcock.

The numerous inland lakes, rivers, streams, and coastal areas along Lake Michigan and Grand Traverse Bay are home to many types of waterfowl, herons, shorebirds, ospreys, and eagles. In particular, the sandy shores of the Sleeping Bear Dunes National Lakeshore and the Manitou Islands provide critical habitat for the Piping Plover, which has recently been removed from the USFWS endangered status.

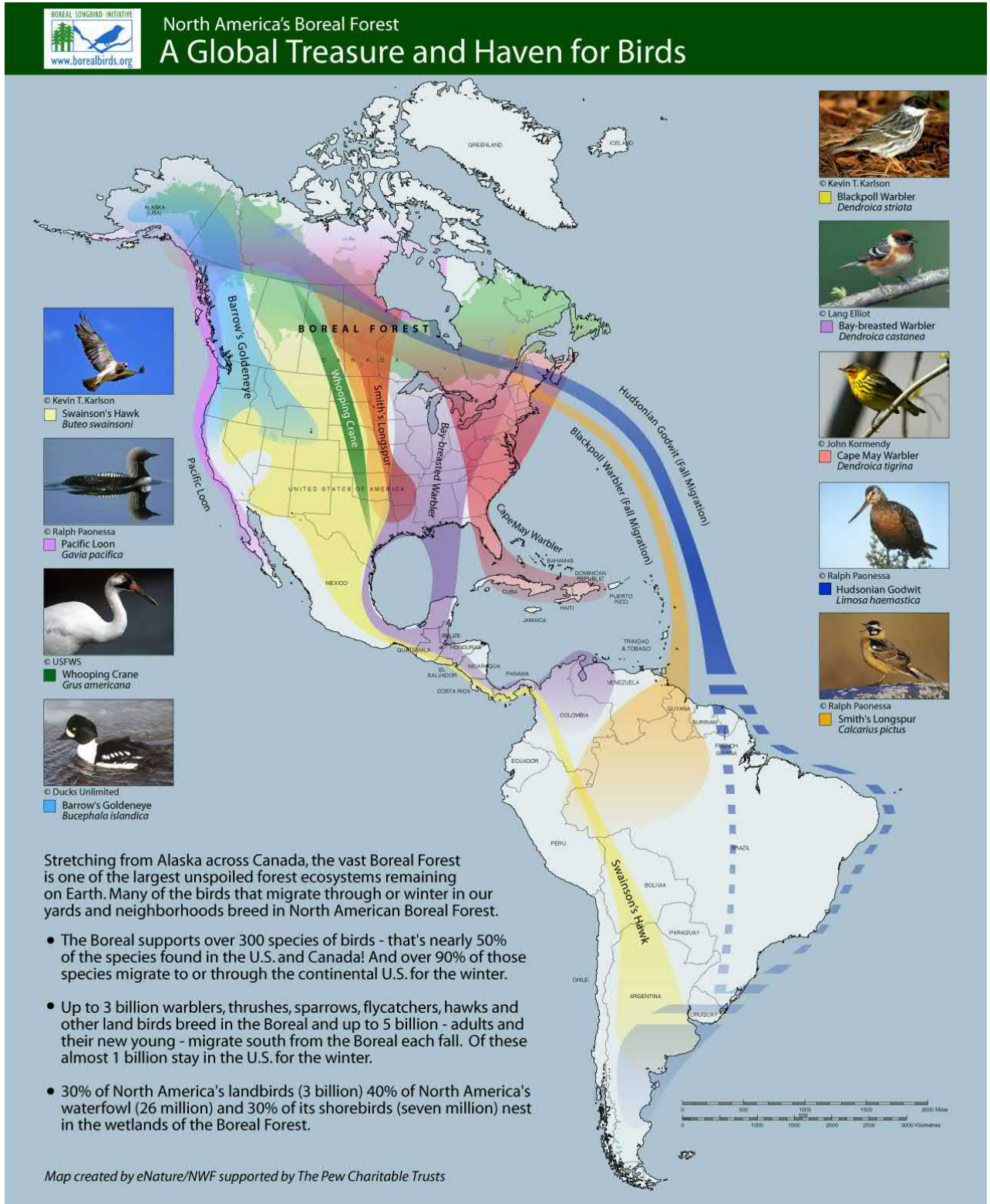
“...Michigan’s Sleeping Bear Birding Trail (“SBBT”) spans an exceptional migratory flyway and thousands of public acres along the Lake Michigan coastline. The Trail is home to the Piping Plover, an endangered shorebird that needs vast stretches of undisturbed beach. The Trail is anchored by the Sleeping Bear Dunes National Lakeshore, a National Park and an Important Bird Area (“IBA”) with 71,000 acres of public land and 35 miles of beaches. The length of the Trail covers all 123 miles of M-22 which runs from Manistee County on the southern end to Traverse City at the north terminus. Michigan Audubon’s Lake Bluff Bird Sanctuary is the southern terminus. The Trail and M-22, outline the “little finger” of Michigan’s mitten peninsula. *“The diverse habitat, significant public access, and many miles of shoreline make the Trail a birder’s paradise...”* (source: <http://sleepingbearbirdingtrail.org>).



## Sleeping Bear Birding Trail













## Public Input Process

### REGULAR RECREATION COMMISSION MEETINGS

#### PUBLIC INPUT SYNOPSIS

A simple on-line Recreation Survey was developed and updated to the County website to coincide with the 30-day public comment period. Nineteen responses were received, and provided some useful information for the Parks and Recreation Commission. **(See Appendix B - Constant Contact Survey and Survey Results).**

Park Commission meetings focusing on the recreation plan update were held from August through January and were open to the public. All existing parks and recreation facilities were discussed with regard to future upgrades in the Goals and Objectives Section. Current facility maps and updated inventory and analysis, onsite photography and input from subcommittee members were provided as a basis of input. Input was gained by numerous attendees, such as representatives from the Lake Leelanau Rowing Club and the Leelanau County 4-H Club.

Informative conversation was generated during these sessions that was important in evaluating the validity of proposed parks and rec plan updates. The majority of the comments came with regard to existing facility upgrades and prospective parks and recreation facilities.

Following the 30-day public comment period, the County conducted 2, two-hour open house sessions at the Governmental Center to provide another input method for interested citizens.

#### RECREATION PLAN UPDATE - PUBLIC INPUT - NOVEMBER 21, 2019

On November 21, 2019, the facilitator-private planning consultant, Gosling Czubak Engineering Sciences, Inc., conducted a public open house to provide a venue for citizens to comment on the updated DRAFT Recreation Plan. The open house was advertised in the *Leelanau Enterprise* and on the County website several weeks prior to the event and added to the County's continually updated calendar of events. A public invitation flyer was also produced and provided to citizens, Parks Commissioners and put up on the County website. **(See Appendix C - Public Information Flyer)**

The facilitators provided maps depicting the existing facilities and proposed recreation system improvements and opportunities. Sections of the plan made available to the public included; 1) Introduction, and Plan Update Process; 2) Recreation Inventory and Physical Resources; 3) Existing and Proposed Park Facilities Overview; and 4) Parks and Recreation Plan Goals and Objectives. Although the open house was lightly attended, some comment and interaction was received including from Saving Birds Through Habitat commenting on the Veronica Valley Park.



## **KEY PUBLIC MEETING INPUT CHRONOLOGY**

### **RECREATION COMMISSION MEETINGS – (AUG. 21, OCT. 16, AND NOV. 20, 2019)**

These formal meetings were held with the Parks and Recreation Commission, consultants, and public in attendance to review and comment on field work findings and Plan sections as provided and reviewed at each meeting. These meetings were open to the public and advertised in advance via the local paper and the County website postings and updates.

### **RECOMMENDATION FOR CONSIDERATION - PARKS AND RECREATION COMMISSION – 5-YEAR PARKS AND RECREATION PLAN UPDATE FINAL REVIEW (NOVEMBER 20, 2019)**

A formal meeting was held with the Parks and Recreation Commission to discuss the updated draft 2019 5-year Parks and Recreation Plan. The Parks and Recreation Commission formally made a motion to recommend the plan be forwarded to the County Board of Commissioners for the purposes of conducting a Public Hearing to adopt the plan.

### **PUBLIC HEARING - COUNTY BOARD OF COMMISSIONERS EXECUTIVE BOARD MEETING (DECEMBER 10, 2019)**

An Executive Board meeting of the Leelanau County Board of Commissioners was held on December 10, 2019, to conduct a public hearing required for the updated *2020-2024 Community Parks and Recreation Plan*, as was previously recommended by the Parks and Recreation Commission.

### **REGULAR MEETING - COUNTY BOARD OF COMMISSIONERS (JANUARY 21, 2020)**

The County Board of Commissioners motioned and moved to adopt by resolution the *2020-24 Community Parks and Recreation Plan* at their regular meeting held on January 21, 2020.

The documentation of the public process can be found in **Appendix D – Public Notices, Affidavits of Publication and Meeting Minutes**.



## Goals & Objectives

The Goals and Objectives for recreation in Leelanau County were developed together with the Parks and Recreation Commission utilizing public input, noting the existing condition of recreational facilities, and conducting a resource inventory.

### MYLES KIMMERLY PARK

#### GOAL #1

**Provide an upgrade to the facility for people to enjoy the *passive aspects and necessary upgrades of support facilities in the park:***

- Work with staff and volunteers to re-confirm trail and pathway locations and needs accessibility improvements
- Determine best location(s) for UA Family style restrooms
- Consider Operations and Maintenance (O&M) needs
- Consider expanded parking needs

#### PROPOSED ACTION:

- a. Develop a looped trail around perimeter of main recreational field area
- b. Refine wooded trail for all-season use
- c. Upgrade current and develop future restroom facilities
- d. Maintain parking opportunities closer to picnic park and playground
- e. Provide universally accessible crosswalks at parking lots and across Co. Rd. 616
- f. Define central location for kiosk on site and relocate informational sign to that location
- g. Upgrade play equipment and surfacing
- h. Upgrade/refurbish small picnic shelters

#### GOAL #2

**Provide an upgrade to the facility for people to utilize *active recreational facilities and necessary upgrades, changes, and arrangements in the park:***

- Work with staff and stakeholder groups to re-confirm ballfield and play court locations and needs accessibility improvements
- Consider O&M needs

- Consider expanded parking and internal vehicle circulation needs
- Consider equipment, fencing and O&M equipment needs

### PROPOSED ACTION:

- a. Develop new facility site master plan
- b. Upgrade baseball fields
- c. Provide parking opportunities closer to ballfields, eliminate parking along CR 616
- d. Work with Glen Lake Community Schools to develop new tennis courts (x8)
- e. Develop new pickleball courts (x4)
- f. Support stakeholder groups to maintain and promote the MKP Disc Golf Course
- g. Evaluate relocation of golf driving range to eastern half of south parcels

### GOAL #3

**Provide an upgrade to the facility for people to *utilize active recreational facilities and amenities on the North Parcel* and necessary upgrades, changes, and arrangements in the park:**

- Work with staff and stakeholder groups to re-confirm, determine upgrades and/or repurposing of existing paddocks
- Consider improved parking and internal vehicle circulation needs
- Consider equipment, fencing upgrades, and operations and maintenance equipment needs
- Improve partnership with the Leelanau Historic Preservation Society (LHPS) and other stakeholders for the historic “Poor Farm” restoration and community garden activities

### PROPOSED ACTION:

- a. Develop looped trail around perimeter open pasture field area
- b. Upgrade current and develop future restroom facilities
- c. Consider preservation of field at the northwestern corner of the property for passive recreation to blend with the historical and agrarian nature of the Poor Farm vicinity
- d. Provide universally accessible crosswalks at parking lots and across Co. Rd. 616
- e. Define central location for interpretive and information kiosks and signs
- f. Work closely with the LHPS to develop site master and facility use plans

## OLD SETTLERS PICNIC GROUNDS

### GOAL #1

**Enhance and maintain a place for people to immerse themselves and enjoy the quiet past at Old Settlers Picnic Grounds, gaining an understanding of the place through history, making it universally accessible and surrounding themselves in Leelanau County’s natural beauty:**

- Update the park plan and develop an opinion of probable costs for improvements



## Goals & Objectives

- Update/Develop Park and O&M plan
- Define or further enhance spaces unique to the park

### **PROPOSED ACTION:**

- a. Provide period signage, including interpretive signage – historical, etc.
- b. Develop more designated parking near the individual uses of the grounds
- c. Refine areas where universal accessibility spaces and access could occur
- d. Upgrade pit toilet facilities to be universally accessible (Parking, Signage, Access)
- e. Upgrade playground equipment
- f. Consider UA Kayak/Canoe Launch development/enhancement
- g. Target upgrades to refurbish the Gazebo Pavilion
- h. Eliminate adjacent activity conflicts in the park. (i.e., grills and playground)

## **VERONICA VALLEY PARK**

### **GOAL #1**

**Make improvements to Veronica Valley creating a passive four season recreational facility. Provide every opportunity in allowing nature to reclaim the property while allowing multi-generational visitors to enjoy the natural features on site:**

### **PROPOSED ACTION:**

- a. Reapply for a MNRTF grant in April, 2020
- b. Design, fund, and implement a walking pathway circuit in the park
- c. Encourage winter activities, such as cross-county skiing, etc.
- d. Provide universally accessible access to the pond
- e. Promote environmental sustainability through conversion of property back to natural processes once on site (Prairie, Forest, etc.)
- f. Construct a small pavilion for picnicking near the fishing pond
- g. Consider wayfinding (informational kiosk, trail map, wayfinding signs)
- h. Refine O&M schedules in the park
- i. Mitigate invasive species throughout the park, including pond weeds
- j. Design, fund, and implement educational signage and displays

### **GOAL #2**

**Continue reclamation of old golf course towards an all-native habitat for all wildlife and passive recreation for all citizens, offering multiple experiences:**

- Retain ongoing collaborations with the Grand Traverse Band of Ottawa and Chippewa Indians (GTB) the Leelanau Conservation District, and others for access to trees and shrubs for planting
- Fully utilize the resources of the Invasive Species Network (ISN) to routinely work to reduce invasive

species in the park

- Work to develop and improve ADA access and broaden use of the park, especially the front pond area

**PROPOSED ACTION:**

- a. Apply for a MNRTF or Recreation Passport grant through the Michigan DNR
- b. Develop ADA trails around front fishing ponds, upgrade parking, picnic, and Porta-potty facilities
- c. Create a plan for yearly invasive species mitigation work
- d. Continue tree and shrub planting with consultation/guidance from the Conservation District
- e. Document all collaboration with other groups through Memorandums of Understanding or Agreements

**GOAL #3**

**Increase citizen use of the park and encourage participation of citizen groups in park life:**

- Identify signage needs and improvements
- Maintain current mowed pathways
- Formalize a relationship with local Scout groups and high schools who need to engage in community service volunteer hours
- Create a Friends of Veronica Valley or other similar group of committed park volunteers
- Continue to support Kids' Fishing Day event

**PROPOSED ACTION:**

- a. Apply for a MNRTF grant or Recreation Passport grant through the Michigan DNR
- b. Develop a set of "volunteer chores" available annually at the park
- c. Work to develop the volunteer group(s) who will commit to completing those chores
- d. Assist the Lake Leelanau Lake Association in solving the aquatic weed problems in the fishing ponds
- e. Actively encourage local schools to utilize the park for their science/natural history education

**GOAL #4**

**Leverage County funds into larger sums for park development through grants:**

- Obtain a MDNR grant for ADA access and other improvements
- Obtain at least two other small grants/donations which can be used as part of local match to MDNR grant
- Obtain some funds from the biannual 2% GTB distribution each year

**PROPOSED ACTION:**

- a. Complete successful application for MDNR grant
- b. Apply to the Cherryland Rural Electric for an additional grant
- c. Develop a relationship with County Commissioners to obtain Tribal 2% allocation funds

## Goals & Objectives

### GOAL #5

**Develop Veronica Valley Park with a focus on natural history education:**

#### PROPOSED ACTION:

- a. Identify educational possibilities for future development
- b. Establish a relationship with the GTB as consultants on Native American use of native plants

### GOAL #6

**Expand, develop, and maintain a long-term parks and recreation maintenance program to ensure quality recreational opportunities at County facilities:**

#### PROPOSED ACTION:

- a. Develop an annual operations and maintenance program with County staff to adequately address immediate and long-term equipment, budgetary, and personnel needs for existing and proposed facilities
- b. Provide the Parks and Recreation Commission with oversight responsibility to assist staff with creation and management of an operations and maintenance program and to make recommendations for improvements to the County Board of Commissioners
- c. Seek out additional in-kind or sub-contractual services where and when needed to supplement the annual operations and maintenance program and efforts of County staff
- d. Participate in the development of the annual County Capital Improvement Plan (CIP) and submit an annual budget to the County Board of Commissioners to fund projected or anticipated recreational needs or proposed improvements







## Action Program

### RECREATIONAL CAPITAL IMPROVEMENTS SCHEDULE 2020-2024

The Goals and Objectives developed in Section 5 have been refined into a series of targeted actions to be considered over the next five years. The Parks and Recreation Commission has prioritized the projects based on public and stakeholder input during the recreation plan public input and in light of proposed and ongoing projects, timeframes, and activities. Each of the potential future projects and activities were prioritized on a scale of 1 to 5, with “1” given the highest priority and “5” given medium to low priority for any given year.

The following table organizes the specific projects over the next five years by date, the estimated cost, and possible funding sources. The table also provides a schedule for ongoing general maintenance including the recreational facility name, estimated annual cost, and funding source. 2017 projects or actions which impact or carry over into subsequent years are also represented. A project-specific description can be referenced using the associated goal and task numbers/letters found in Section 5.

#### 2020

GOAL/TASK	PROJECT NAME	PRIORITY	EST. COST	FUNDING SOURCES		
				COUNTY	MDNR	OTHER
MKP #2a	MKP updated site Plan development	1	\$5-7k	X		
	Include #1 a-c					
	Include #2 b-g					
MKP #2b-d	Work with stakeholders and Glen Lake Comm. Schools on proposed Tennis courts implementation	1	Unknown	X		Glen Lake Comm. Schools
OSPG #1B-D	Develop locations to Upgrade BF and onsite parking; Coincide with Grub shack improvements targeted	2	Staff and P&R seek quotes	X		
VVP #1a	Phase 1 development grant professional services	1	\$2000	\$2000		
VVP #2c	Winter activities	2		website/ P&R		
VVP #2e	Sustainability projects with partners	1	Budgeted	X		

GOAL/TASK	PROJECT NAME	PRIORITY	EST. COST	FUNDING SOURCES		
				COUNTY	MDNR	OTHER
VVP #3e	Pond weed control	1	Budgeted	X		Possible Bingham Twp. match
VVP #4b	Small Grant application to increase local match on MDNR grant request	2		Staff / P & R Committee		Cherryland Rural Elec.
VVP #4c and 5b	Small Grant application to increase local match on MDNR grant request	2		Staff / P & R Committee		GTB
VVP #3B,C,E	Volunteers; school awareness	3		Staff / P & R Committee		

2021

GOAL/TASK	PROJECT NAME	PRIORITY	EST. COST	FUNDING SOURCES		
				COUNTY	MDNR	OTHER
VVP #3e	Pond weed control	1	Budgeted	X		Possible Binham Twp. match
OSPG #4G	Assess upgrade needs for gazebo and seek quote to establish budget for 2021 or 2022	2		Staff / P & R Committee		Cherryland Rural Elec.
OSPG #1	Update O&M Plan and budgeting	2	Annual	Staff / P&R		
VVP #1a	Design engineering, bidding, and construction start if grant is awarded	1	\$198,600 (70%)	66.5K	161.7K	5-46K
MKP #2b-d	Work with stakeholders and Glen Lake Comm. Schools on proposed tennis courts implementation	1	Unknown	X		Glen Lake Comm. Schools



## Action Program

GOAL/TASK	PROJECT NAME	PRIORITY	EST. COST	FUNDING SOURCES		
				COUNTY	MDNR	OTHER
MKP #2e-h	Work with stakeholders to establish detailed program, costs and funding recommendations	2	Unknown	X		
MKP #3a-f	Work with stakeholders and LHPS to consider and coordinate upgrades and useage on the North Parcel	3	Unknown	X		Stakeholders and LHPS
MKP #2	O&M Plan and budgeting	3	Annual	Staff / P&R		
VVP #3B,C,E	Volunteers; school awareness	3		Staff / P & R Committee		
VVP #6 A-D	O&M Plan and budgeting	1	Annual	Staff / P&R		

### 2022

GOAL/TASK	PROJECT NAME	PRIORITY	EST. COST	FUNDING SOURCES		
				COUNTY	MDNR	OTHER
VVP #3e	Pond weed control	1	Budgeted	X		Possible Binham Twp. match
VVP #1a	Complete construction	1	\$132,400 (40%)	28.5K	69.3K	5-46K
VVP #6 A-D	O&M Plan and budgeting	1	Annual	Staff / P&R		
OSPG #4G	Implement upgrade to existing Gazebo	1	TBD in 2021	Staff / P & R Committee		Cherryland Rural Elec.
VVP #3B,C,E	Volunteers; School awareness	3				
MKP #3a-f	Work with stakeholders and LHPS to consider and coordinate upgrades and useage on the North Parcel	1	Unknown	X		Stakeholders and LHPS

Action Program

GOAL/TASK	PROJECT NAME	PRIORITY	EST. COST	FUNDING SOURCES		
				COUNTY	MDNR	OTHER
MKP #2e-h	Develop funding recommendations to upgrade ADA, and other critical infrastructure including restrooms and apply for MDNR Rec Passport funding	1	Unknown	X	Recreation Passport Grant app.	
MKP #2	O&M Plan and budgeting	2	Annual	Staff / P&R		

2023

GOAL/TASK	PROJECT NAME	PRIORITY	EST. COST	FUNDING SOURCES		
				COUNTY	MDNR	OTHER
MKP #2e-h	Apply for MDNR Rec Passport funding	1	Unknown	X	Recreation Passport Grant app.	Rotary Charities; Service Clubs
VVP #3e	Pond weed control	1	Budgeted	X		Possible Binham Twp. Match
VVP #3B,C,E	Volunteers; school awareness	2		Staff / P & R Committee		
OSPG #1	O&M Plan and budgeting	1	Annual	Staff / P&R		

2024

GOAL/TASK	PROJECT NAME	PRIORITY	EST. COST	FUNDING SOURCES		
				COUNTY	MDNR	OTHER
VVP #3e	Pond weed control	1	Budgeted	X		B i n g - h a m T w p . match
VVP #6 A-D	Update O&M Plan and budgeting	1	Annual	Staff / P&R		
MKP #2	Update O&M Plan and budgeting	1	Annual	Staff / P&R		

# Action Program

GOAL/TASK	PROJECT NAME	PRIORITY	EST. COST	FUNDING SOURCES		
				COUNTY	MDNR	OTHER
MKP #2e-h	Implement MDNR Rec Passport grant project if funded	1	Unknown	X	Recreation Passport Grant app.	Rotary Charities; Service Clubs
OSPG #1	Update O&M Plan and budgeting	1	Annual	Staff / P&R		