

Land Use Districts

- | | | | |
|---|---|--|--|
| ■ Ag Conservation (AC) | ■ Business 2 (B2) | ■ Residential (R1) | ■ Residential Ag (RA5) |
| ■ Business 1 (B1) | ▨ Business 2 (B2) "Proposed" | ■ Residential (R2) | ■ Resort / Rec (RR) |
| ▨ Business 1 (B1) "Proposed" | ■ Governmental (GOVT) | ■ Residential Ag (RA2) | |

Allgaier Rd & M-72

Future Land Use



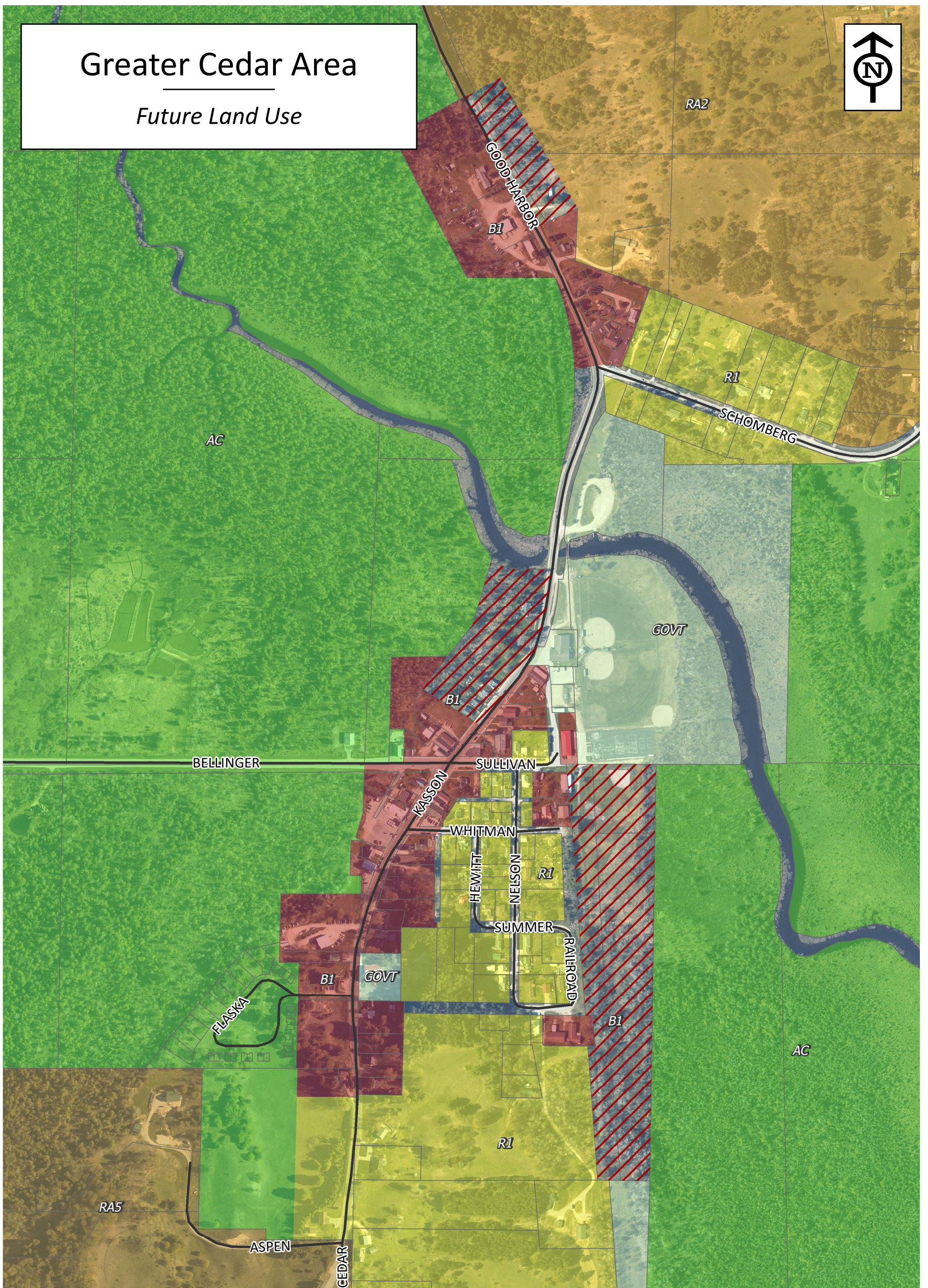
1 inch = 300 feet

Land Use Districts

- | | | | |
|----------------------------|----------------------------|----------------------|----------------------|
| Ag Conservation (AC) | Business 2 (B2) | Residential (R1) | Residential Ag (RA5) |
| Business 1 (B1) | Business 2 (B2) "Proposed" | Residential (R2) | Resort / Rec (RR) |
| Business 1 (B1) "Proposed" | Governmental (GOVT) | Residential Ag (RA2) | |

Greater Cedar Area

Future Land Use



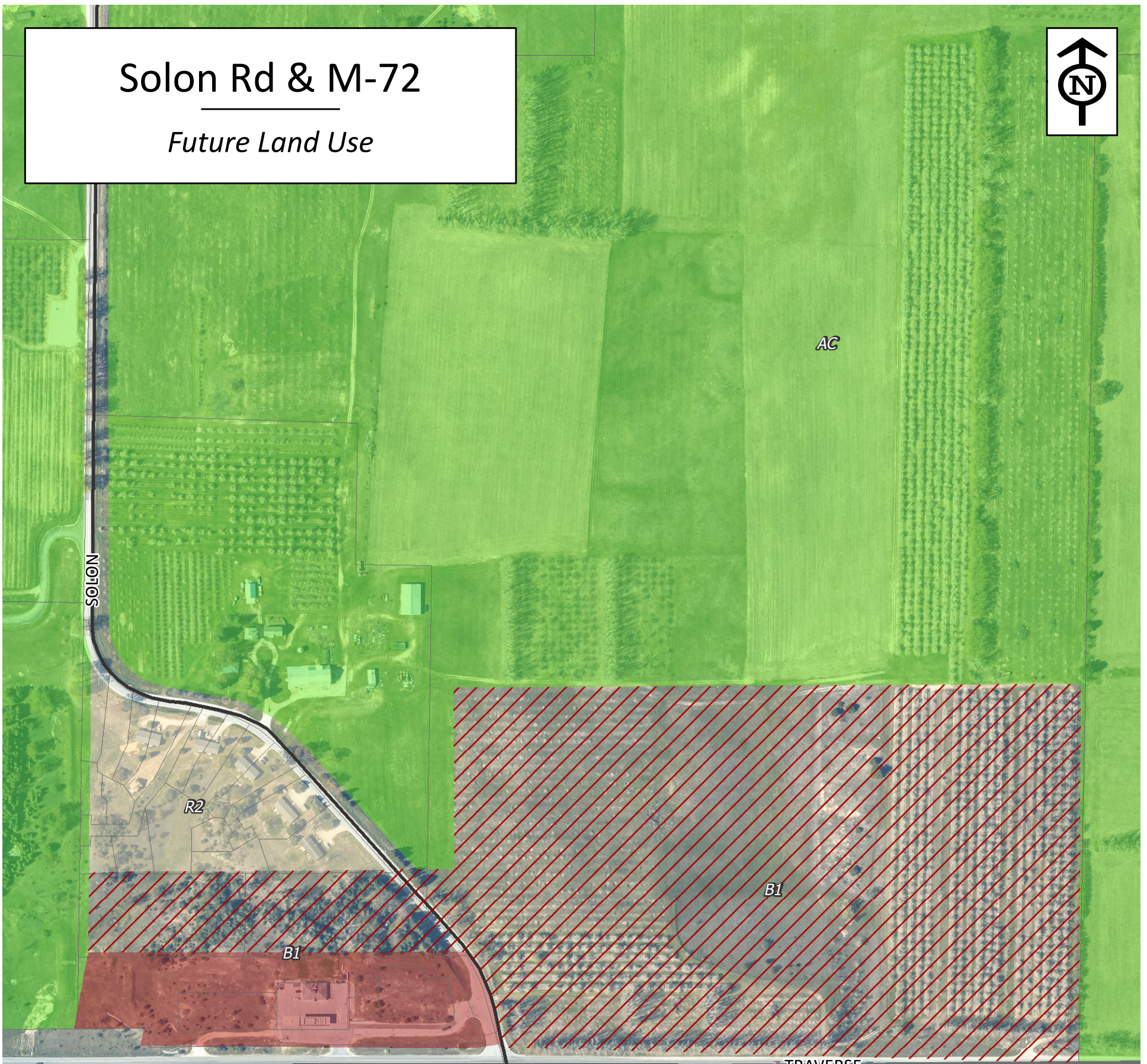
1 inch = 400 feet

Land Use Districts

- | | | | |
|----------------------------|----------------------------|----------------------|----------------------|
| Ag Conservation (AC) | Business 2 (B2) | Residential (R1) | Residential Ag (RA5) |
| Business 1 (B1) | Business 2 (B2) "Proposed" | Residential (R2) | Resort / Rec (RR) |
| Business 1 (B1) "Proposed" | Governmental (GOVT) | Residential Ag (RA2) | |

Solon Rd & M-72

Future Land Use



1 inch = 300 feet

Land Use Districts

- | | | | |
|----------------------------|----------------------------|----------------------|----------------------|
| Ag Conservation (AC) | Business 2 (B2) | Residential (R1) | Residential Ag (RA5) |
| Business 1 (B1) | Business 2 (B2) "Proposed" | Residential (R2) | Resort / Rec (RR) |
| Business 1 (B1) "Proposed" | Governmental (GOVT) | Residential Ag (RA2) | |

The Four Corners

Future Land Use



1 inch = 300 feet

Land Use Districts

- | | | | |
|----------------------------|----------------------------|----------------------|----------------------|
| Ag Conservation (AC) | Business 2 (B2) | Residential (R1) | Residential Ag (RA5) |
| Business 1 (B1) | Business 2 (B2) "Proposed" | Residential (R2) | Resort / Rec (RR) |
| Business 1 (B1) "Proposed" | Governmental (GOVT) | Residential Ag (RA2) | |