

Bill Wiesner Public Comment #05 – to the Leelanau County Board of Commissioners

Tuesday May 10, 2022 Request for discussion and research by the Board to:

Replace Dominion Voting Machines with Paper Ballots that are local, secure, and easily auditable



Dr. Douglas G. Frank's analysis on "How the Election was Stolen" (at 12min32sec mark):
<https://electionfraud20.org/in-detail/cyber-symposium-mike-lindell/>

How the Election Was Stolen... In a Nutshell...

- Before the Election...**
 - Decide What the Outcome Will Be for Each State
 - Regulated at the County Level (3,242 Counties)
 - Inflate the Registration Databases
 - "Credit Line" of Phantom Voters
 - Program the Machines
- During the Election...**
 - Databases and Machines are Hacked & Tracked
 - Manipulate Votes and Voters
 - Regulate County Outcomes
- After the Election...**
 - Pair Last Minute Voter ID's with Phantom Voters
 - Clean Up the Evidence
 - Remove Phantom Voters

County (105%); Barry County (105%); Gladwin County (105%); Menominee County (105%); Crawford County (105%); Muskegon County (105%); Kalamazoo County (104%); St. Joseph County (104%); Ottawa County (103%); Clinton County (103%); Saginaw County (103%); Manistee County (103%); Lapeer County (103%); Calhoun County (103%); Ogemaw County (103%); Macomb County (103%); Missaukee County (102%); Eaton County (102%); Shiawassee County (102%); Huron County (102%); Lenawee County (101%); Branch County (101%); Osceola County (101%); Clare County (100%); Arenac County (100%); Bay County (100%); Lake County (100%)

Statewide, Michigan had 105% of its eligible population registered.

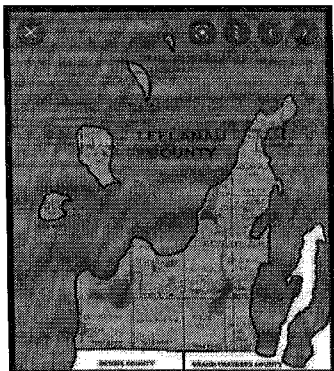


A question was raised [To Dr. Douglas G Frank]: "Can you compare your data to a state where there isn't fraud?"

Dr. Frank spent a long time trying to do that, but actually struggled to find a place there wasn't fraud, or at least struggled in knowing for sure that it was clean. **He describes that by examining historic data:**

Bloated Voter Rolls

In Oct 2020, a month before the election, Judicial Watch released a study that found 353 US counties [67 of 353 = 19% of ALL USA counties =>100% are from Michigan] in 29 states had voter registration rates exceeding 100% of the eligible voting-age citizens.

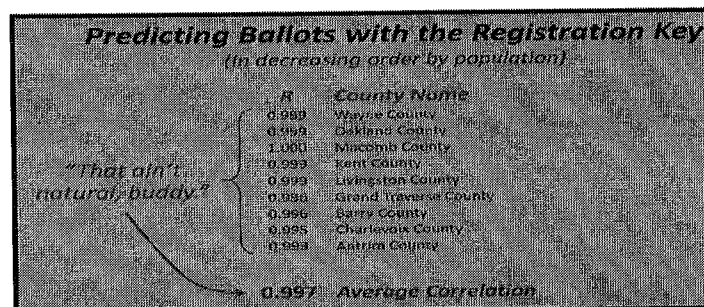


In Michigan the following [67 of 83 = 81%] counties exceeded 100%, AND LEELANAU COUNTY was #1 out of the 83 Michigan Counties at Bloating the Voter Rolls:

- Leelanau County (119%);
- Benzie County (118%);
- Alcona County (116%);
- Kalamazoo County (115%);
- Alcona County (114%);
- Berrien County (114%); Keweenaw County (114%); Benzie County (113%); Washtenaw County (113%);
- Alcona County (112%); Dickinson County (112%); Roscommon County (112%);
- Alcona County (112%);
- Alcona County (111%); Oakland County (110%); Iron County (110%); Monroe County (109%); Genesee County (109%); Ontonagon County (109%); Gogebic County (109%); Livingston County (109%); Alcona County (108%); Cass County (108%); Allegan County (108%); Oceana County (107%); Midland County (107%); Kent County (107%); Montmorency County (107%); Van Buren County (107%); Wayne County (107%); Schoolcraft County (107%); Mason County (107%); Oscoda County (107%); Iosco County (107%);
- Alcona County (106%); Presque Isle County (106%); Delta County (106%);
- Alcona County (106%); St Clair County (106%);
- Alcona County (105%); Newaygo

1990	He could detect no fraudulent algorithm running
2008	Voter rolls massively expanded once motor vehicle registrations automatically registered voters at the same time. Around this time, the correlation coefficient between census demographics and vote demographics was around 0.5
2012	Correlation 0.7-0.8
2016	Correlation 0.9
2020	Correlation almost 0.999

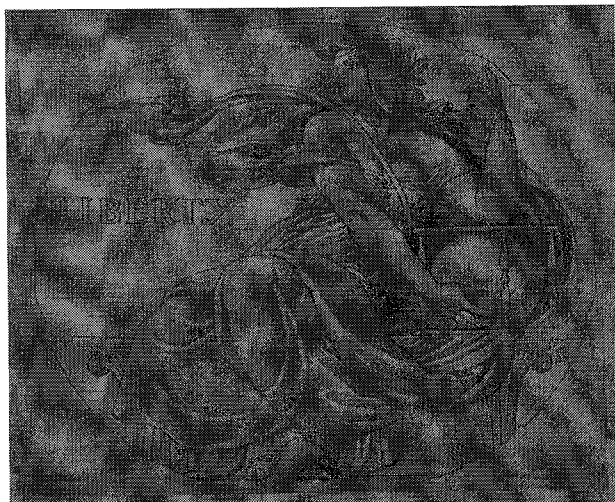
He found some evidence of fraud from Republicans around 2004-2005. It's not an issue of "Oh those evil Democrats", but it happens with RINOs (Republicans in name only) also.



The Movie "2000 Mules" is more solid proof that the 2020 Election was stolen from every man, woman & child in Leelanau County.



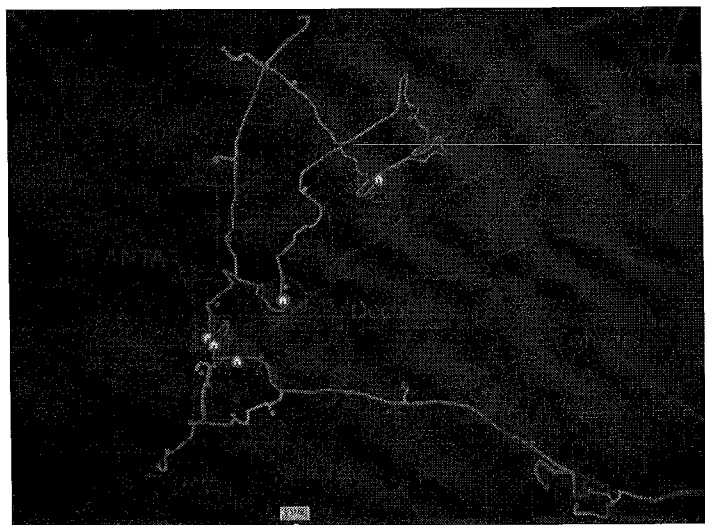
Lady Liberty: a Wisconsin State House Mosaic depicting Lady Liberty pointing her left hand up toward God and/or heaven, and her right hand protecting the ballot box:



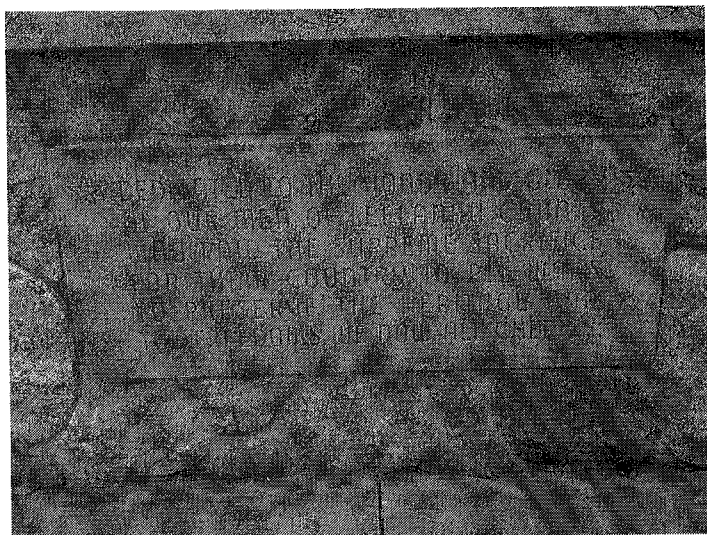
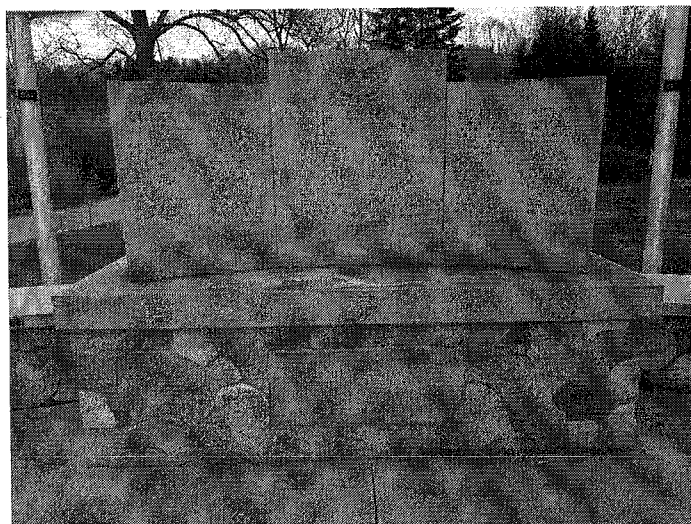
Below is a map of one day's work for a "mule" in Atlanta Georgia, where through geo-mapping to cell towers he/she was tracked (and on video) stopping at 30 voting drop boxes (red dots) and 5 different non-profit organizations (red circles) to pick up more ballots.

See the 37 min mark of the Conservative Daily Podcast (CDP) show on Mon 05/09/22 named: "2000 Mules Exposes Antifa Democrat Party Collusion and Organized Crime"

<https://conservative-daily.com/cd-livestream/2000-mules-should-be-2000-arrests>



Leelanau County War Memorial:



Bill Wiesner / Leelanau County Resident &
www.TCFamily.org Founder
(231) 313-6805