



**Benzie-Leelanau**

**DISTRICT HEALTH DEPARTMENT**

*CARING FOR OUR COMMUNITIES*

# ANNUAL REPORT

OCTOBER 1, 2017-  
SEPTEMBER 30, 2018

---

Benzie-Leelanau  
District Health  
Department

Phone: 231-882-4409

Website: [www.bldhd.org](http://www.bldhd.org)

Email: [www.bldhd.org/contact](mailto:www.bldhd.org/contact)

# Message from the Health Officer

---

Greetings! We are proud to present the 2017-2018 Annual Report for the Benzie Leelanau District Health Department. In developing this year's report, we have gone "back to basics"! As you browse through the pages that follow you will notice a focus on Essential Public Health Services. This is the invisible force that is upholding and protecting the basic elements of life that many people take for granted. Because of Public Health, kids no longer die of polio and diphtheria thanks to effective vaccines, death related to lung cancer and heart disease is dramatically reduced, illness due to contaminated food and water has greatly declined, work-related deaths and occupational injuries have significantly decreased, and air quality in Michigan bars and restaurants has greatly improved. Another way we are demonstrating a "back to basics" approach is through the linkages throughout our programs where we focus on assuring that all individuals and families are able to meet their basic needs such as housing, transportation, and access to healthy food. We know that even the most advanced medical care can't help us achieve good health until these most basic needs can be met. We know that not everyone starts from the same place and it is in understanding these unique circumstances that we can create the healthiest community in which all can live, work, and play in good health.

We are grateful for the support and guidance of our Board of Health and for a staff of dedicated professionals who serve our families and communities each day. It is our hope that you will recognize their efforts in the pages and highlights that follow!

In good health!

Lisa Peacock, Health Officer

Joshua Meyerson, Medical Director

---

## Administration Team

- Medical Director  
Joshua Meyerson, MD, MPH
- Health Officer  
Lisa Peacock, MSN, RN, WHNP-BC
- Director of Personal Health  
Michelle Klein, RN, MA, PH-C
- Personal Health Supervisor  
Debbie Aldridge, R.N.
- Director of Administrative Services  
Dodie Putney, B.S.
- Environmental Health Director  
Tom Fountain, R.S

## Board of Health

---

- Chairperson  
Melinda Lautner
- Vice Chairperson  
Gary Sauer
- Members  
Carolyn Rentenbach  
Casey Noonan  
Dr. George Ryckman  
Roger Griner

# Mandated Essential Public Health Services

---



## Food Protection

2017-2018: 405 Restaurant Inspections, 65 Food License/Temporary License Issued, 6 Follow up Inspections to Foodborne Illness



## Immunization

2017-2018: 1544 Immunizations Administered



Private/Non-Community Water Supply  
2017-2018: 349 Well Permits Issued, 1,168 Water Test Performed.



Hearing Screening  
2017-2018:  
1561 Children screened



On-Site Sewage Disposal  
2017-2018: 438 Sewer Permits Issued,



Vision Screening  
2017-2018:  
2635 Children screened



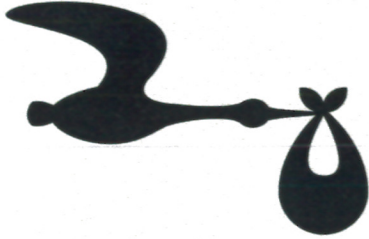
STD Control & Prevention  
2017-2018:  
113 Cases Reported



Infectious Disease Control  
2017-2018: 198 Communicable diseases investigated

# Personal Health Non-Mandated Programs and Services

---



Healthy Futures  
2017-2018: 165 Families Enrolled.  
108 Home Visits Done



Women, Infants and Children (WIC)  
Program  
2017-2018: 1323 Women, Infants, and  
Children Served, 147 Lead Test  
Performed, and 134 Fluoride Applied



Maternal Infant Health Program  
2017-2018: 213 Moms/Babies Enrolled and  
Provided 1242 Visits



Community Connections  
2017-2018: 1140 Referrals.  
3082 Visits/Phone Calls



Reproductive Health  
2017-2018: 89 Clients, 327 visits, and 8  
BCCCP visits.



Worksite Wellness  
2017-2018: 3 Worksites



Children's Special  
Health Care Services  
2017-2018: 149 Clients Served

# Personal Health Highlight

---

The Community Connections Program is staffed by a team of nurses, social workers, and community health workers who assist clients in accessing resources that support health.

**Examples includes connecting and assisting clients in obtaining:**

A Primary health care or Dental Home  
Behavioral health or other specialists providers  
Financial assistance for medical care or Outstanding medical bills  
Transportation  
Health Insurance or other DHS Applications  
Housing  
GED or College Programs  
Employment  
Access to Food, Household Items, Clothing, and other basic needs



What our Community Connections clients said:

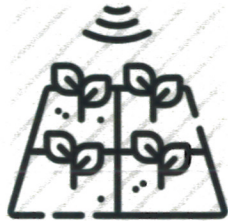
"My Community Connections worker helped me apply for health insurance and food assistance. I can finally go to the dentist."

"The Community Connections nurse helped me find an apartment. And then she found donated furniture I could use."

"I am now enrolled in college classes. I never thought I could do this until my Community Connections Social Worker helped me apply and find scholarships."

# Environmental Health Non-Mandated Programs and Services

---



116 Vacant Land Evaluations-  
Perk Tests



23 Children's camp, Foster care, and  
Daycare Facility Inspections



42 Swimming Pool and Spa Inspections,  
Swimming Beach Monitoring - 11  
beaches for 13 weeks (Late June through  
Mid-September)



358 Well and Septic System Inspections



29- Campground Inspections



2- Tattoo Parlor Inspections



12 Suspected Rabies Animal Test  
Submissions



19 Septage Hauling Vehicle  
Inspections and 14 Septage Receiving  
Facility Inspections



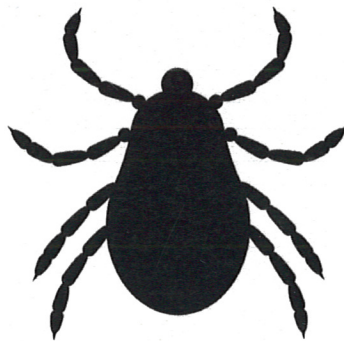
Emergency Preparedness

# Environmental Health Highlight

---

The Environmental Health division of the Benzie Leelanau District Health Department provides many services to assure a safe environment for our community.

Food Service Inspections  
Children's Camp, Foster Care, Daycare Facility Inspections  
Swimming Pool/Spa Inspections  
Campground Inspections  
Swimming Beach Monitoring  
Septage Hauling Vehicle Inspections  
Septage Receiving Facility Inspections  
Tattoo Parlor Inspections  
Noncommunity Water Supply Inspections  
Suspected Rabid Animal Test Submission  
Emerging Disease Surveillance (Ticks, Mosquitoes, Etc.)



## **Environmental Health Stories:**

"Our health department nurse contacted their Environmental Health staff when we had a terrible problem with our septic system in the middle of winter. We didn't know what to do and didn't have any money to pay for repairs. The Environmental Health Sanitarian figured out how to fix the problem and helped us get financial help to get it fixed as quickly as possible."

"The Benzie-Leelanau District Health Department staff helped food pantry staff learn about proper food storage and handling so we could be sure we were doing things correctly to protect our customers"

# 2017-2018 Financial Summary

---

