

Eurasian Watermilfoil

Eurasian Watermilfoil (EWM) is a submerged perennial plant. Stems are rooted at the base and grow towards the surface. It can grow in water from 2 to 30 ft deep, but most commonly at depths between 7 – 12 ft.

Why it needs to be controlled

EWM is an invasive aquatic plant native to Europe, Asia and Northern Africa. Introduced to North America in the 19th century, **it is now one of the most widely distributed invasive aquatic plants on the continent.**

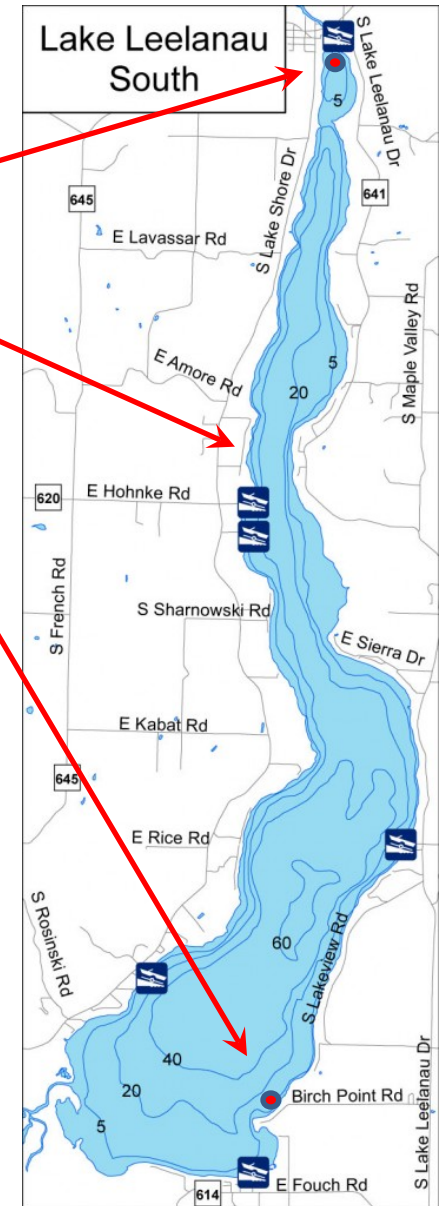
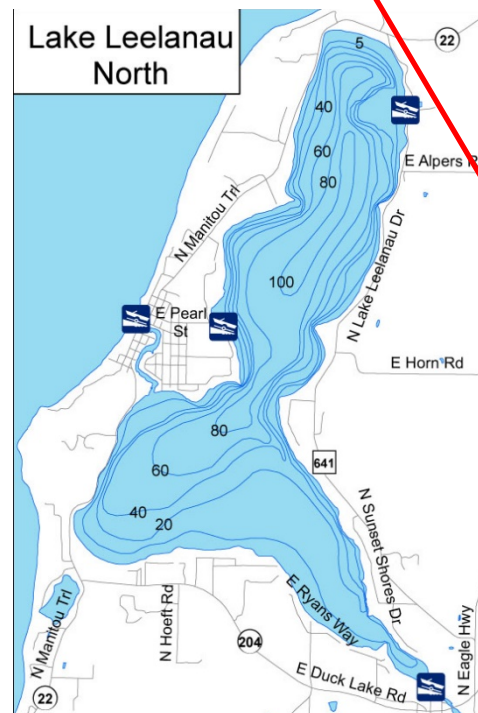


Eurasian Watermilfoil

**Where is EWM
now in Northern
Michigan?**

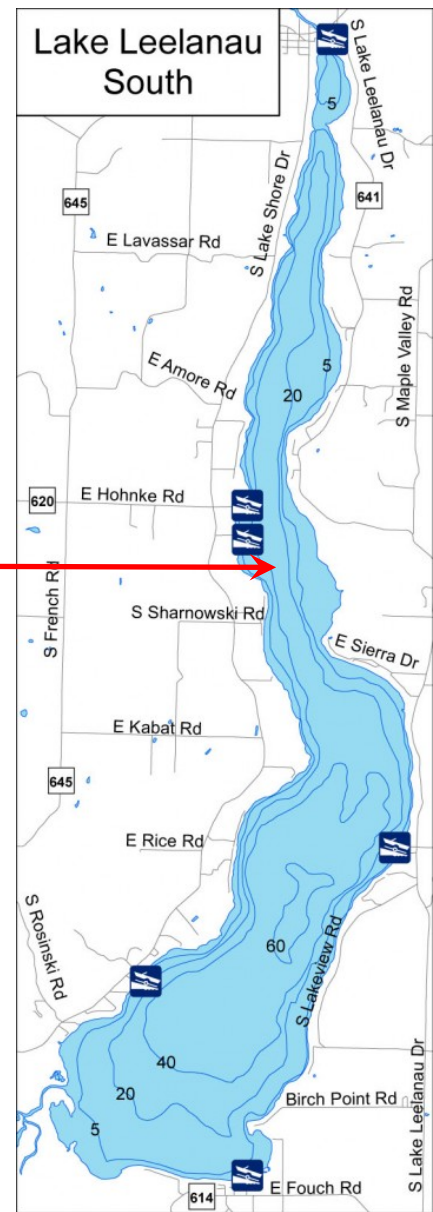
Crystal Lake
Duck Lake
Higgins Lake
Houghton Lake
Long Lake
Paradise Lake
Portage Lake
Walloon Lake
and more ...

**Where is EWM
now on Lake
Leelanau?**



Eurasian Water-Milfoil

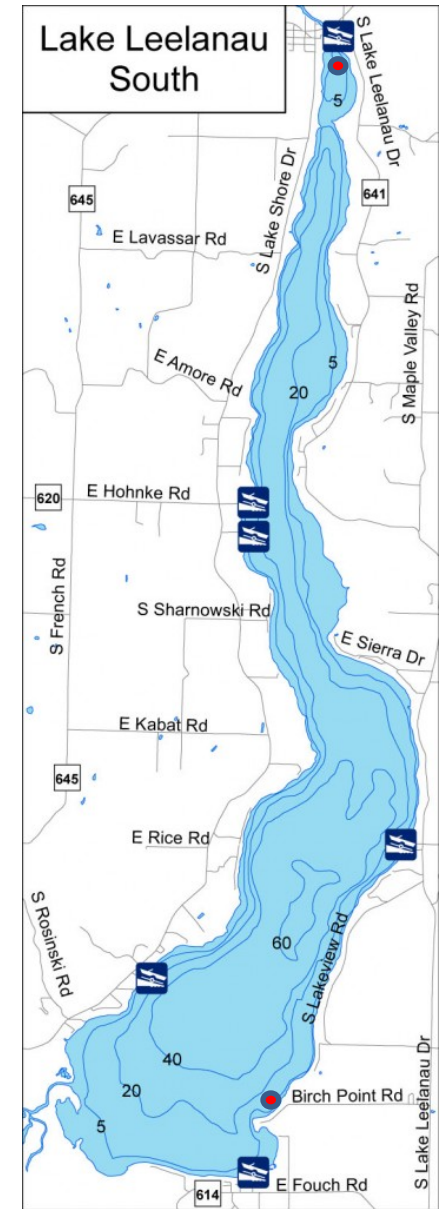
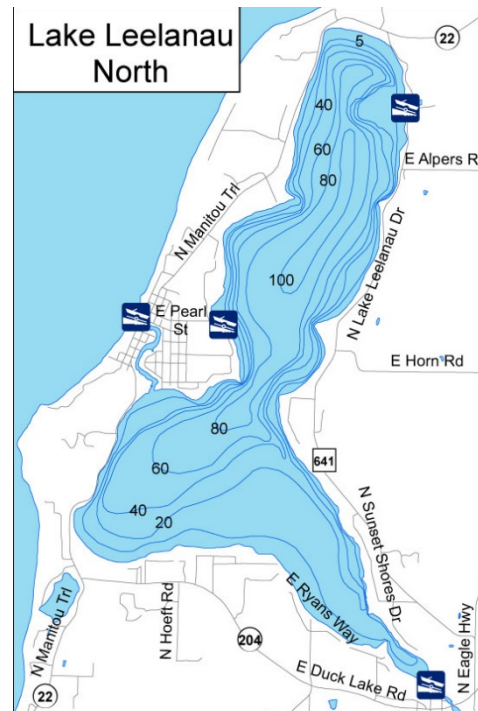
Drone footage - Taken July 21



Eurasian Water-Milfoil

Which parts of Lake Leelanau are most at risk of EWM infestation?

Water 7 – 12 ft deep



What steps is Lake Leelanau Lake Association taking to combat the spread of EWM?

- Our initial survey of EWM locations in Lake Leelanau is complete. We have identified 11 separate infestations.
- We have decided to employ a firm that uses Diver Assisted Suction Harvesting (DASH) technology to remove EWM
- We have applied for a permit from MEGLE to remove up to 2 acres of EWM, concentrating on small outlying infestations before tackling the largest body (shown in the video)
- We have begun private fundraising and so far raised roughly \$40,000 toward this effort. We plan to apply for state funds earmarked for invasive species control over the winter
- Support has been received from Bingham Township, the Leelanau Conservancy, and from riparian property owners adjacent the smaller known infestations. We will be seeking written approvals to remove EWM from the larger areas this winter.
- Support is being sought from the County Commission to assist in our efforts to procure state and other grant funding. In addition, we will be working with all government units to develop a plan for boat washing facilities that can help prevent future nuisance invaders from entering Lake Leelanau.

Eurasian Water-Milfoil

LLLA is the only organization in a position to combat the spread of EWM on Lake Leelanau

We need your help!

