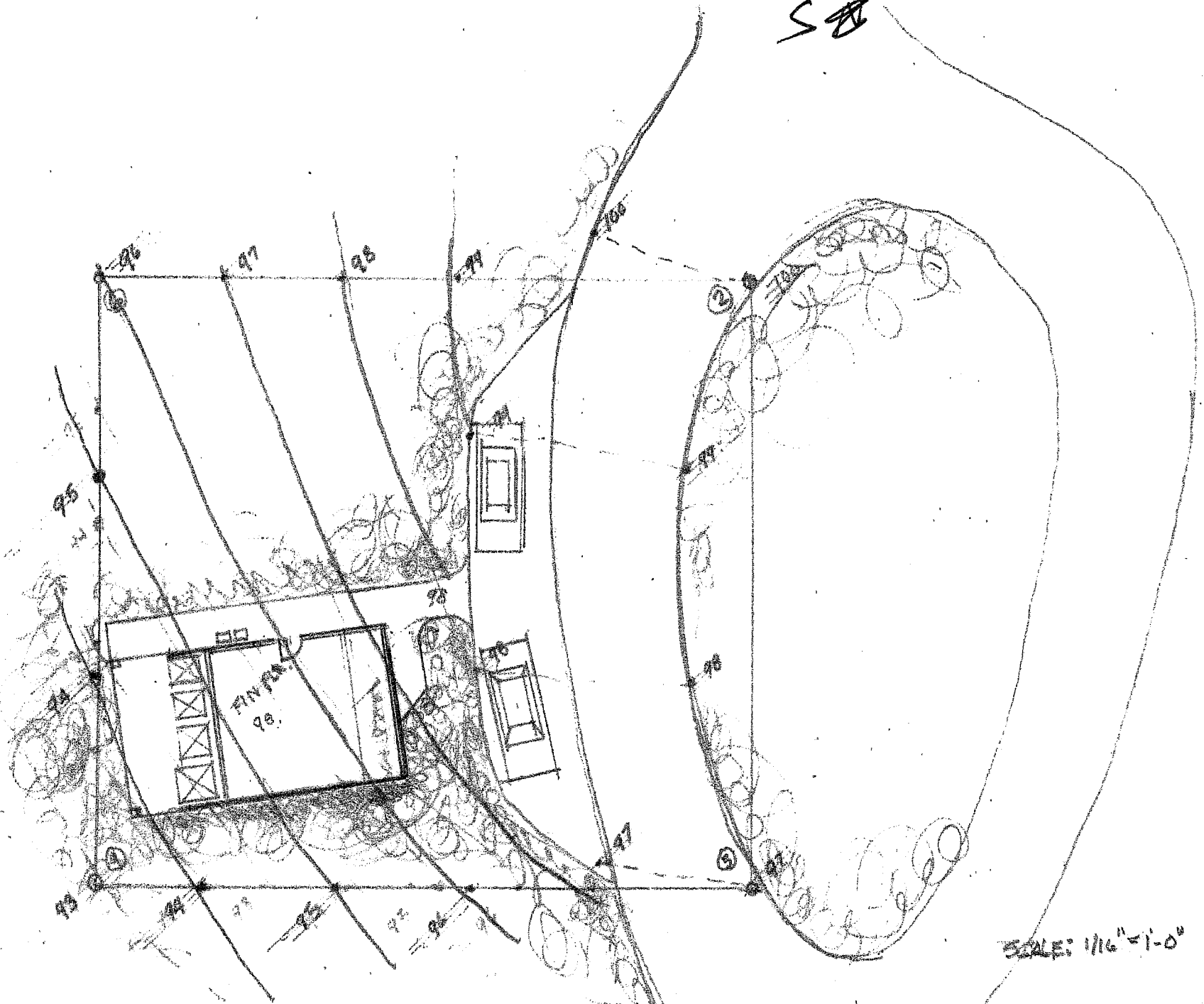
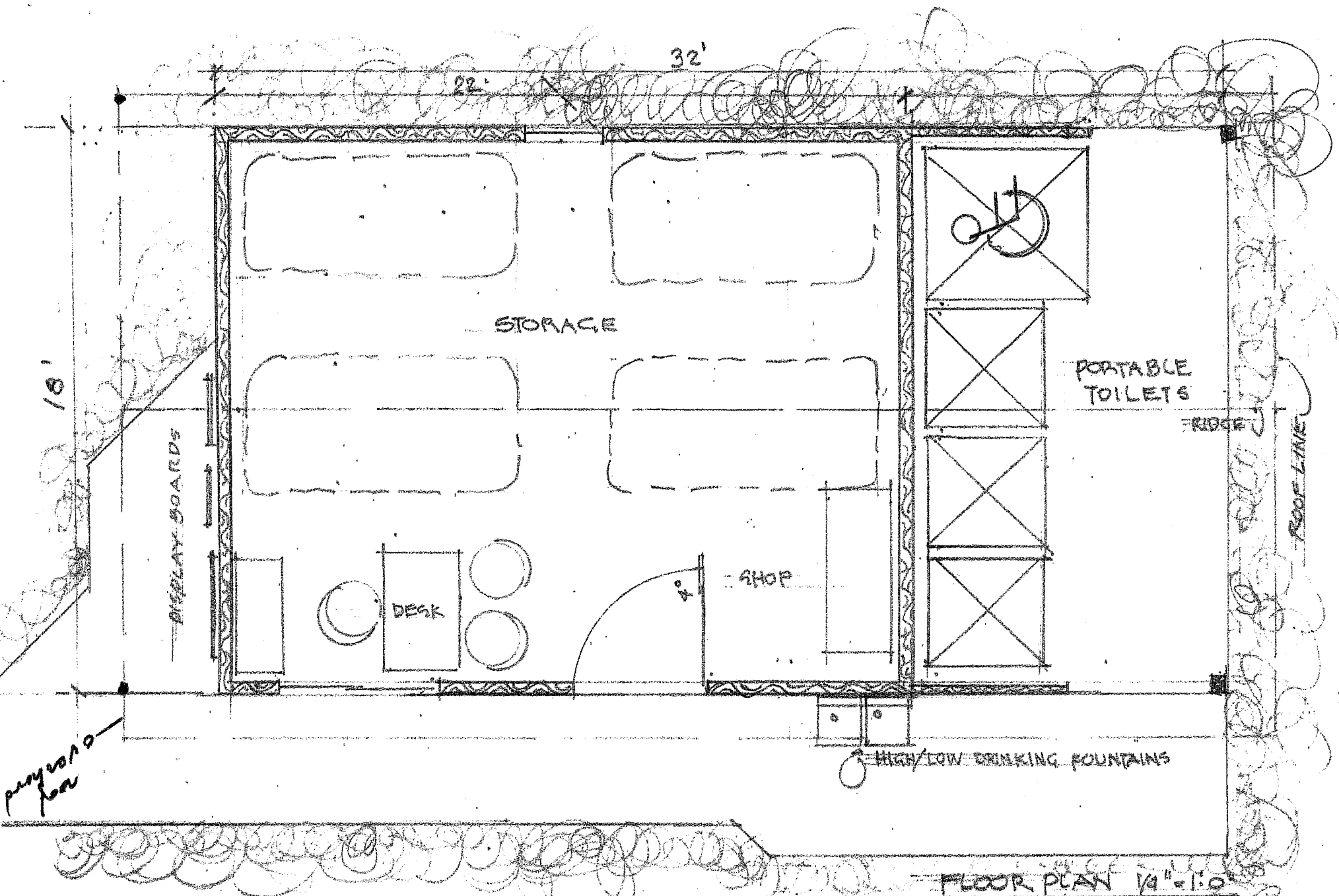


58



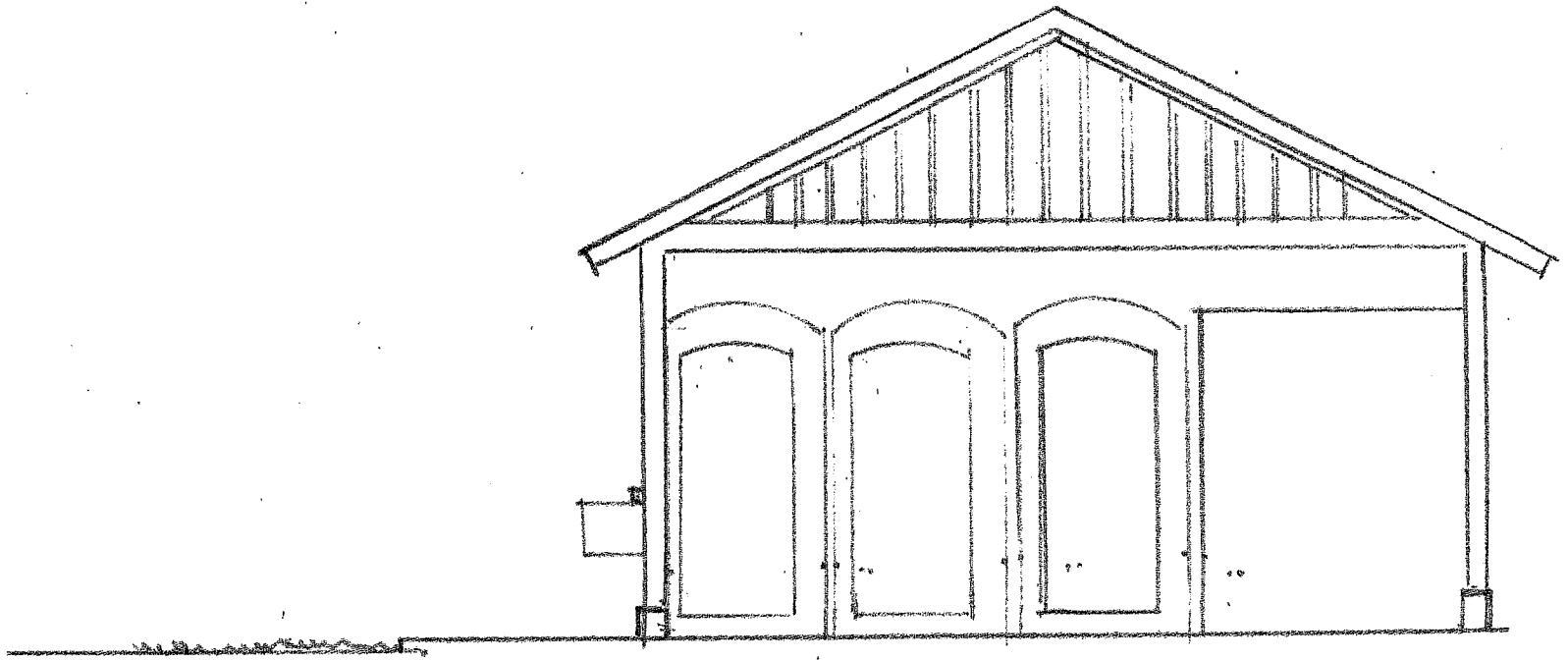
MYLES KIMMERLY • STORAGE BLDG. PORTABLE TOILETS
& DRINKING FOUNTAINS

10/12/21

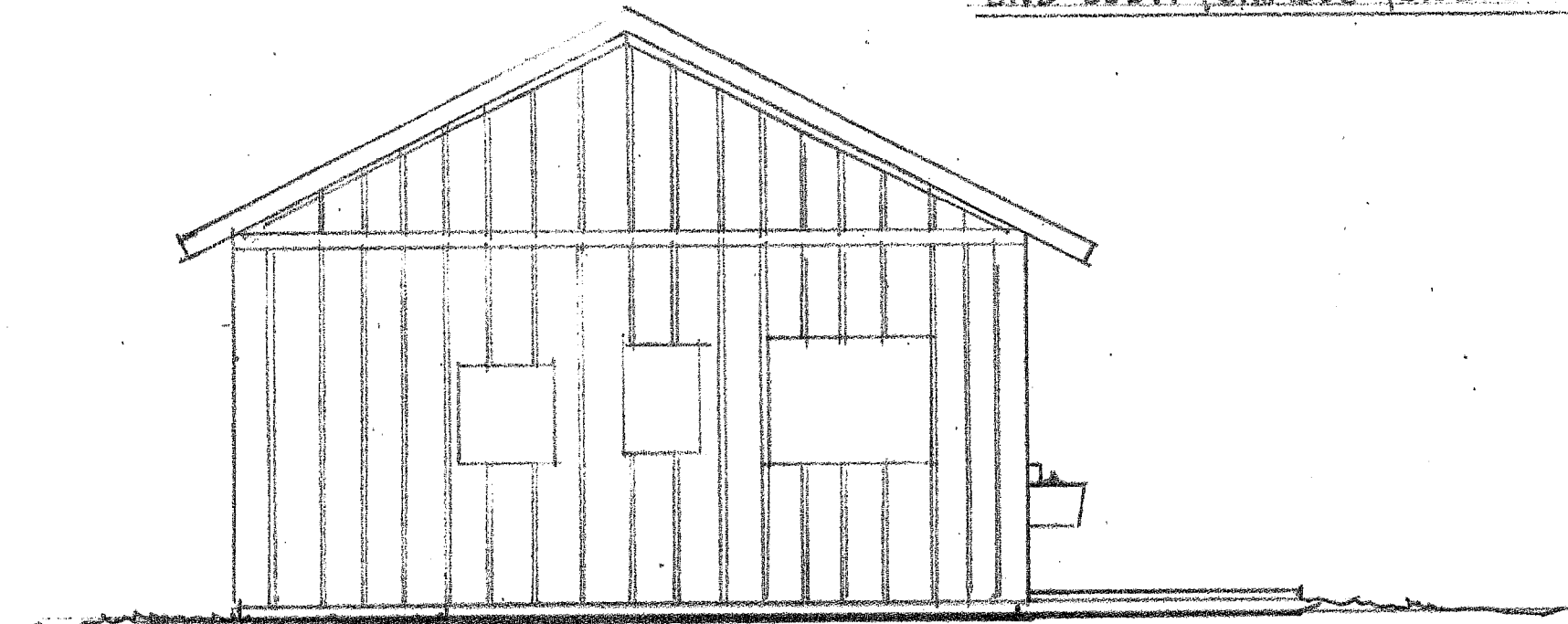


MYLES KIMMERLY STORAGE & PORTABLE TOILET SHELTER

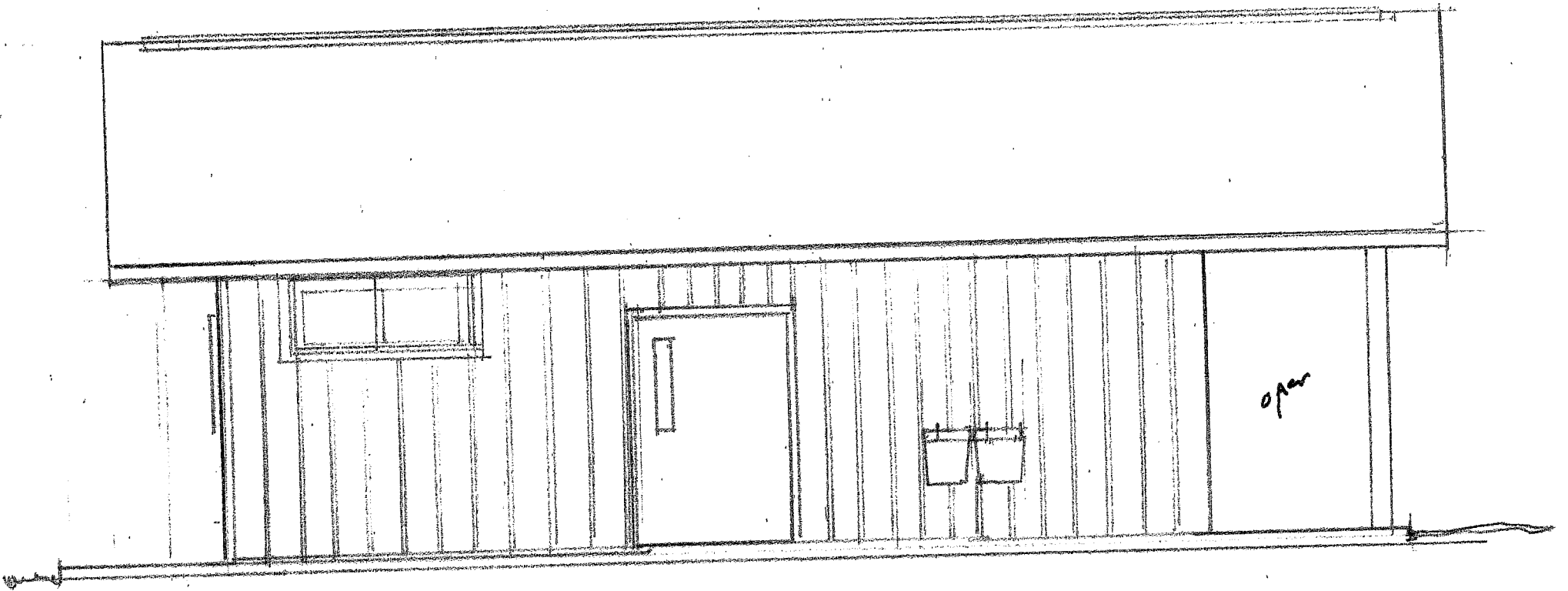
10/12/21



END ELEV. PORTABLE TOILETS.



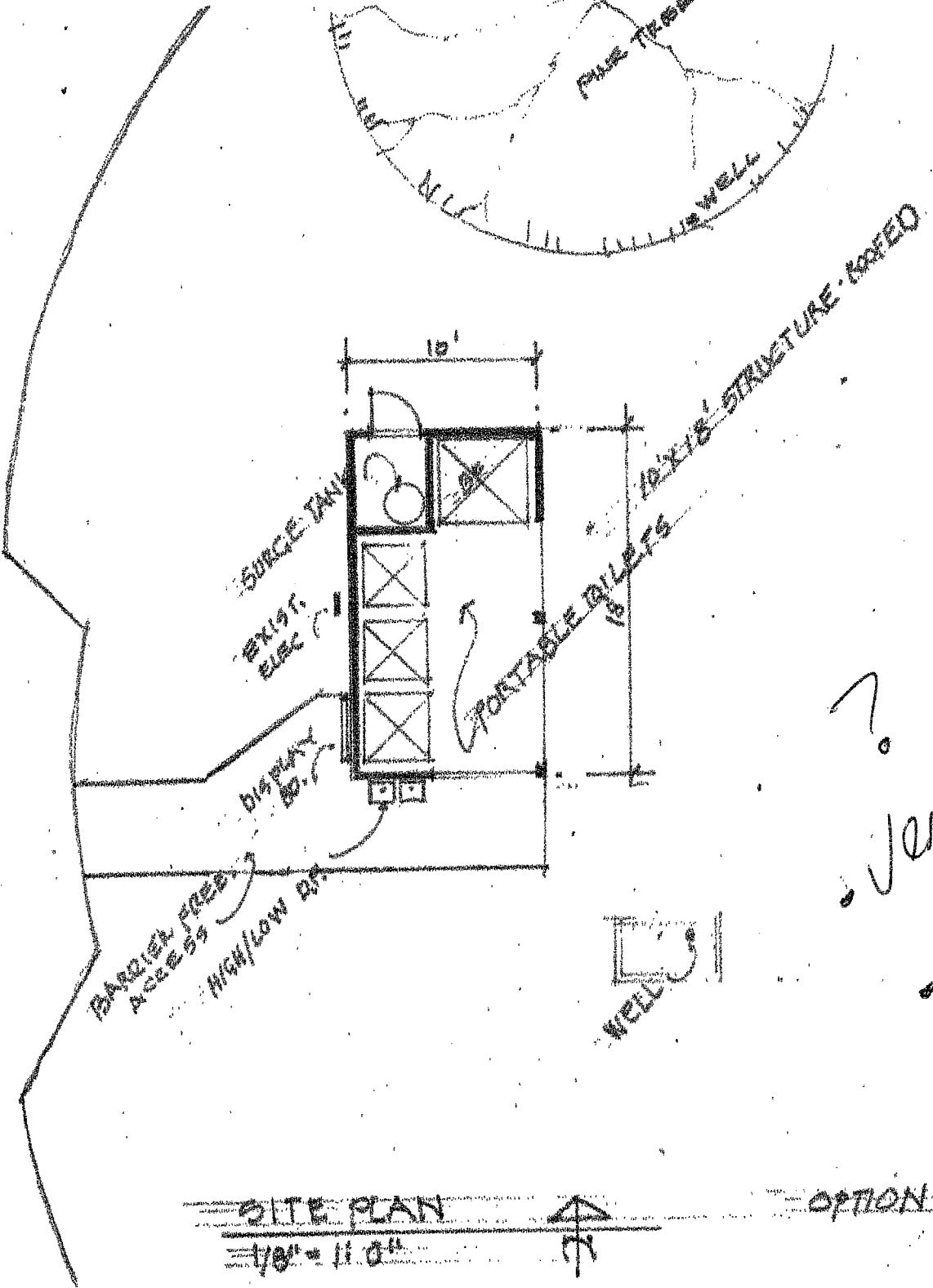
SIGN WALL



SIDE ELEVATION 1/4" = 1'-0"



EXIST. DRIVE



- ?
- Ventilation
- access for cleaning

SITE PLAN

1/8" = 11.0"

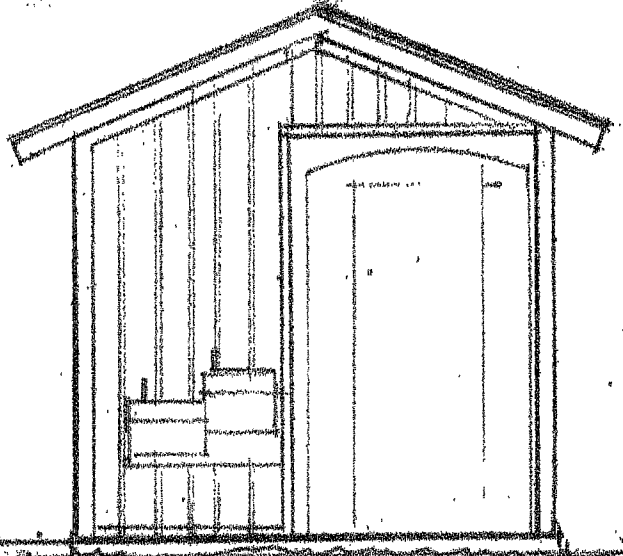
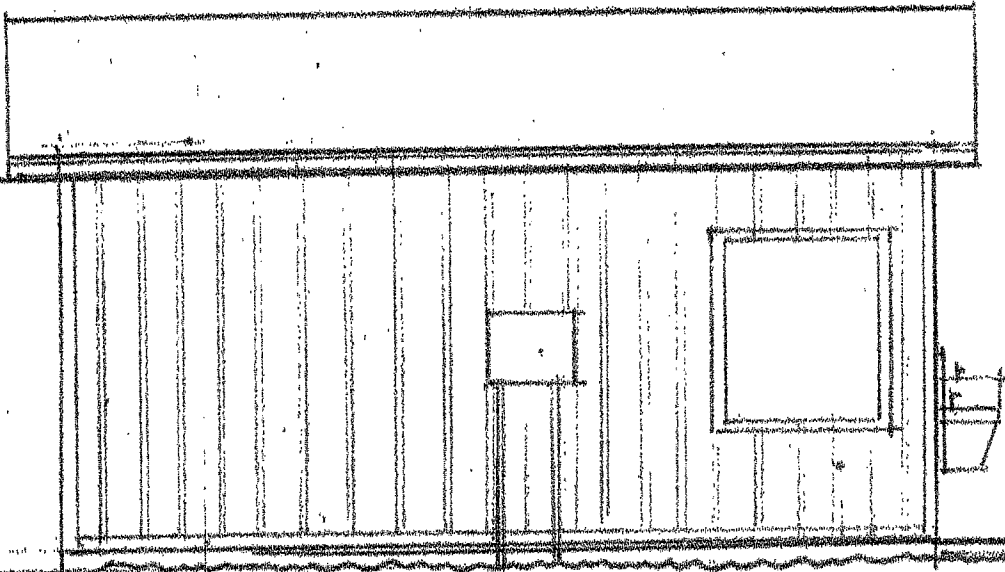
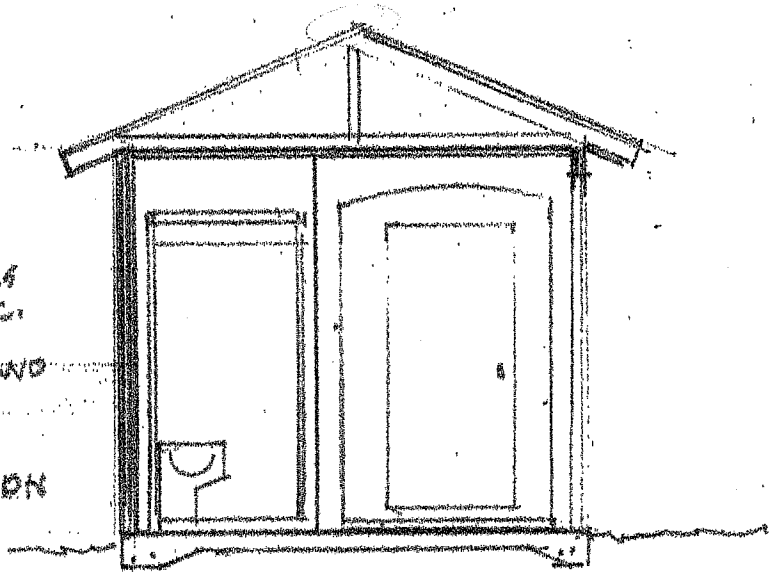


OPTION # 2

2x4 WALLS
@ 24" O.C.

5/8" PLY WD
RIG.

SECTION



ELEV. DISPLAY BD. DRINKING FOUNTAINS.

OPTION 2 1/4" = 1'-0"