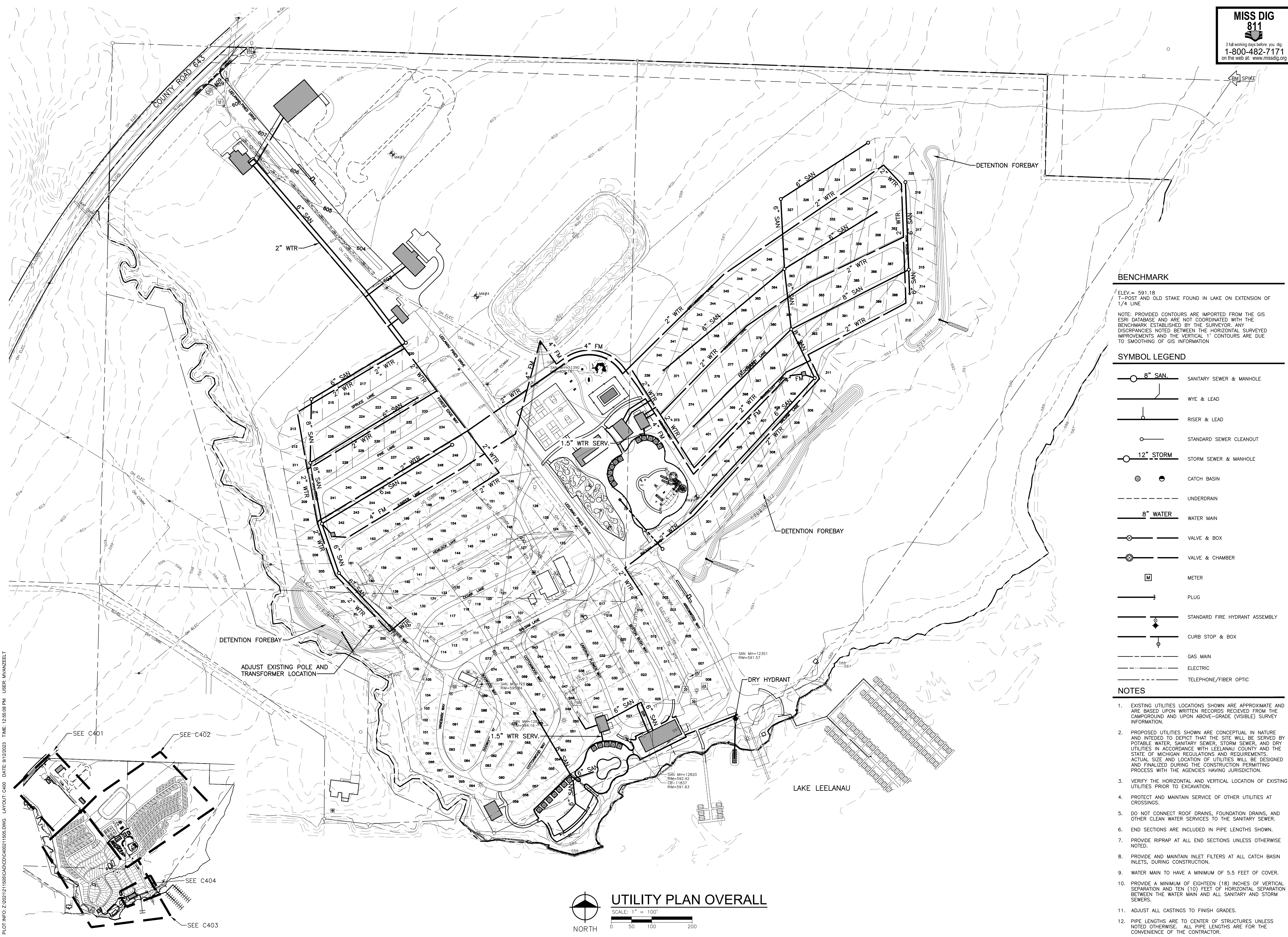


**MISS DIG**  
811  
3 full working days before you dig  
1-800-482-7171  
on the web at: www.missdig.org



**BENCHMARK**

ELEV. = 591.18  
T-POST AND OLD STAKE FOUND IN LAKE ON EXTENSION OF 1/4\"/>

NOTE: PROVIDED CONTOURS ARE IMPORTED FROM THE GIS ESRI DATABASE AND ARE NOT COORDINATED WITH THE BENCHMARK ESTABLISHED BY THE SURVEYOR. ANY DISCREPANCIES NOTED BETWEEN THE HORIZONTAL SURVEYED IMPROVEMENTS AND THE VERTICAL 1\"/>

**SYMBOL LEGEND**

- 8\"/> SAN. SANITARY SEWER & MANHOLE
- WYE & LEAD
- RISER & LEAD
- STANDARD SEWER CLEANOUT
- 12\"/> STORM STORM SEWER & MANHOLE
- CATCH BASIN
- UNDERDRAIN
- 8\"/> WATER WATER MAIN
- VALVE & BOX
- VALVE & CHAMBER
- METER
- PLUG
- STANDARD FIRE HYDRANT ASSEMBLY
- CURB STOP & BOX
- GAS MAIN
- ELECTRIC
- TELEPHONE/FIBER OPTIC

**NOTES**

1. EXISTING UTILITIES LOCATIONS SHOWN ARE APPROXIMATE AND ARE BASED UPON WRITTEN RECORDS RECEIVED FROM THE CAMPGROUND AND UPON ABOVE-GRADE (VISIBLE) SURVEY INFORMATION.
2. PROPOSED UTILITIES SHOWN ARE CONCEPTUAL IN NATURE AND INTENDED TO DEPICT THAT THE SITE WILL BE SERVED BY POTABLE WATER, SANITARY SEWER, STORM SEWER, AND DRY UTILITIES IN ACCORDANCE WITH LEELANAU COUNTY AND THE STATE OF MICHIGAN REGULATIONS AND REQUIREMENTS. ACTUAL SIZE AND LOCATION OF UTILITIES WILL BE DESIGNED AND FINALIZED DURING THE CONSTRUCTION PERMITTING PROCESS WITH THE AGENCIES HAVING JURISDICTION.
3. VERIFY THE HORIZONTAL AND VERTICAL LOCATION OF EXISTING UTILITIES PRIOR TO EXCAVATION.
4. PROTECT AND MAINTAIN SERVICE OF OTHER UTILITIES AT CROSSINGS.
5. DO NOT CONNECT ROOF DRAINS, FOUNDATION DRAINS, AND OTHER CLEAN WATER SERVICES TO THE SANITARY SEWER.
6. END SECTIONS ARE INCLUDED IN PIPE LENGTHS SHOWN.
7. PROVIDE RIPRAP AT ALL END SECTIONS UNLESS OTHERWISE NOTED.
8. PROVIDE AND MAINTAIN INLET FILTERS AT ALL CATCH BASIN INLETS, DURING CONSTRUCTION.
9. WATER MAIN TO HAVE A MINIMUM OF 5.5 FEET OF COVER.
10. PROVIDE A MINIMUM OF EIGHTEEN (18) INCHES OF VERTICAL SEPARATION AND TEN (10) FEET OF HORIZONTAL SEPARATION BETWEEN THE WATER MAIN AND ALL SANITARY AND STORM SEWERS.
11. ADJUST ALL CASTINGS TO FINISH GRADES.
12. PIPE LENGTHS ARE TO CENTER OF STRUCTURES UNLESS NOTED OTHERWISE. ALL PIPE LENGTHS ARE FOR THE CONVENIENCE OF THE CONTRACTOR.

**REVISIONS**

**NOT FOR CONSTRUCTION**

9/12/2023	SITE PLAN APPROVAL
9/12/2023	SITE PLAN APPROVAL
9/30/2022	SITE PLAN APPROVAL
9/16/2022	SITE PLAN APPROVAL
8/25/2022	SITE PLAN APPROVAL
8/2/2022	SITE PLAN APPROVAL
6/21/2022	SITE PLAN APPROVAL

Drawn By ADO  
Designer KAG  
Reviewer NB  
Manager JTV

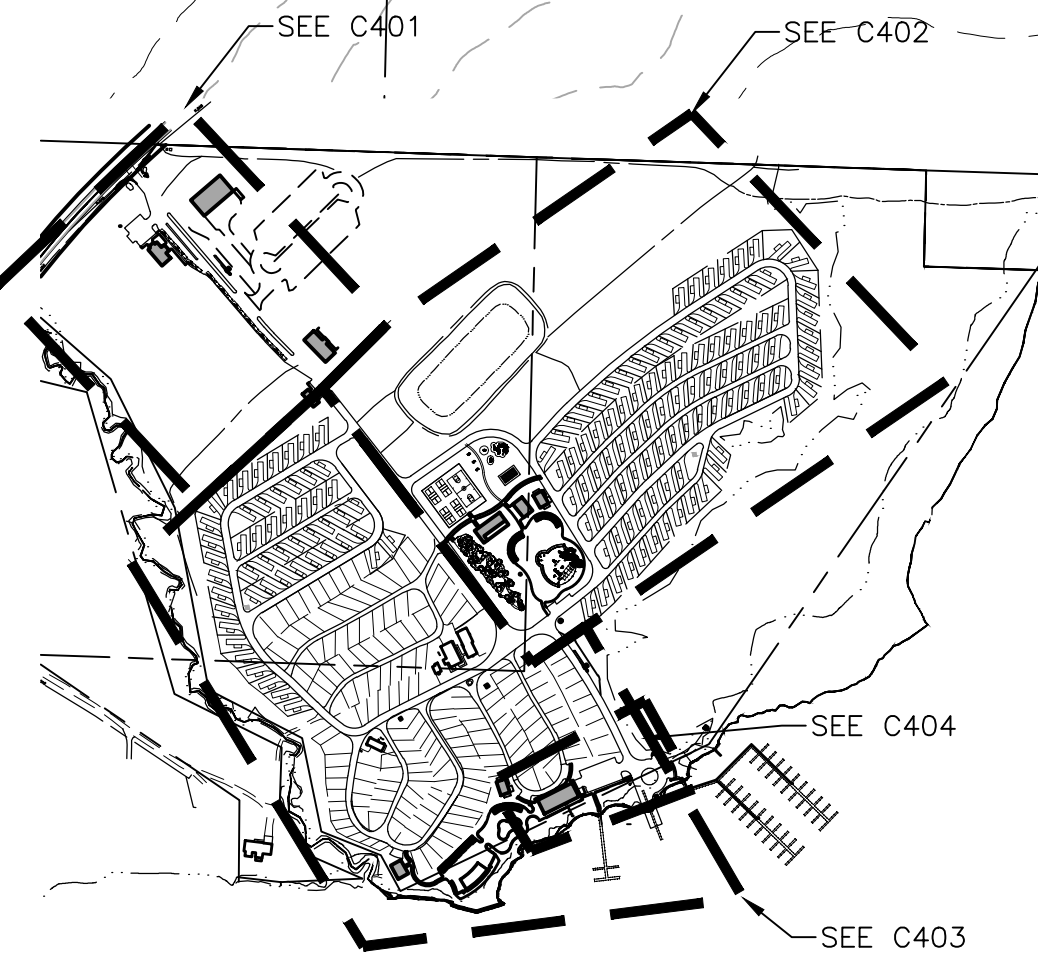
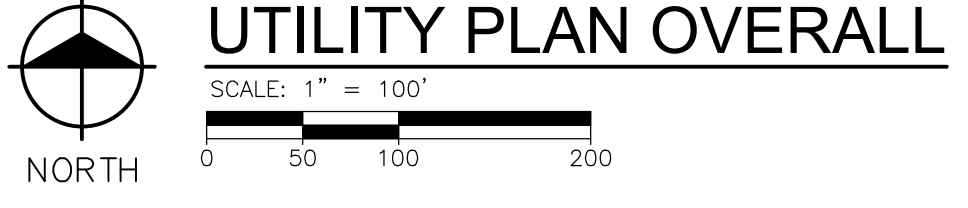
Hard copy is intended to be 24"x36" when plotted. Scale(s) indicated and graphic quality may not be accurate for any other size.

PROJECT NO.  
**211505**

SHEET NO.

**C400**

PLOT INFO: Z:\2023\211505\CADD\C400\11505.DWG LAYOUT C400 DATE: 9/12/2023 TIME: 12:50:08 PM USER: MVANZEELE





**MISS DIG**  
811  
3 full working days before you dig;  
1-800-482-7171  
on the web at: www.missdig.org

REVISIONS

**NOT FOR CONSTRUCTION**

9/12/2023	SITE PLAN APPROVAL
9/1/2023	SITE PLAN APPROVAL
9/30/2022	SITE PLAN APPROVAL
9/16/2022	SITE PLAN APPROVAL
8/25/2022	SITE PLAN APPROVAL
8/2/2022	SITE PLAN APPROVAL
6/21/2022	SITE PLAN APPROVAL

Drawn By: ADO  
Designer: KAG  
Reviewer: NB  
Manager: JTV

Hard copy is intended to be 24"x36" when plotted. Scale(s) indicated and graphic quality may not be accurate for any other size.

PROJECT NO.  
**211505**

SHEET NO.

**C401**

**BENCHMARK**

ELEV. = 591.18  
T-POST AND OLD STAKE FOUND IN LAKE ON EXTENSION OF 1/4 LINE

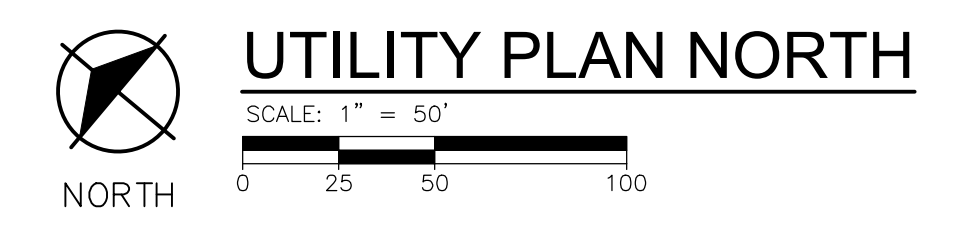
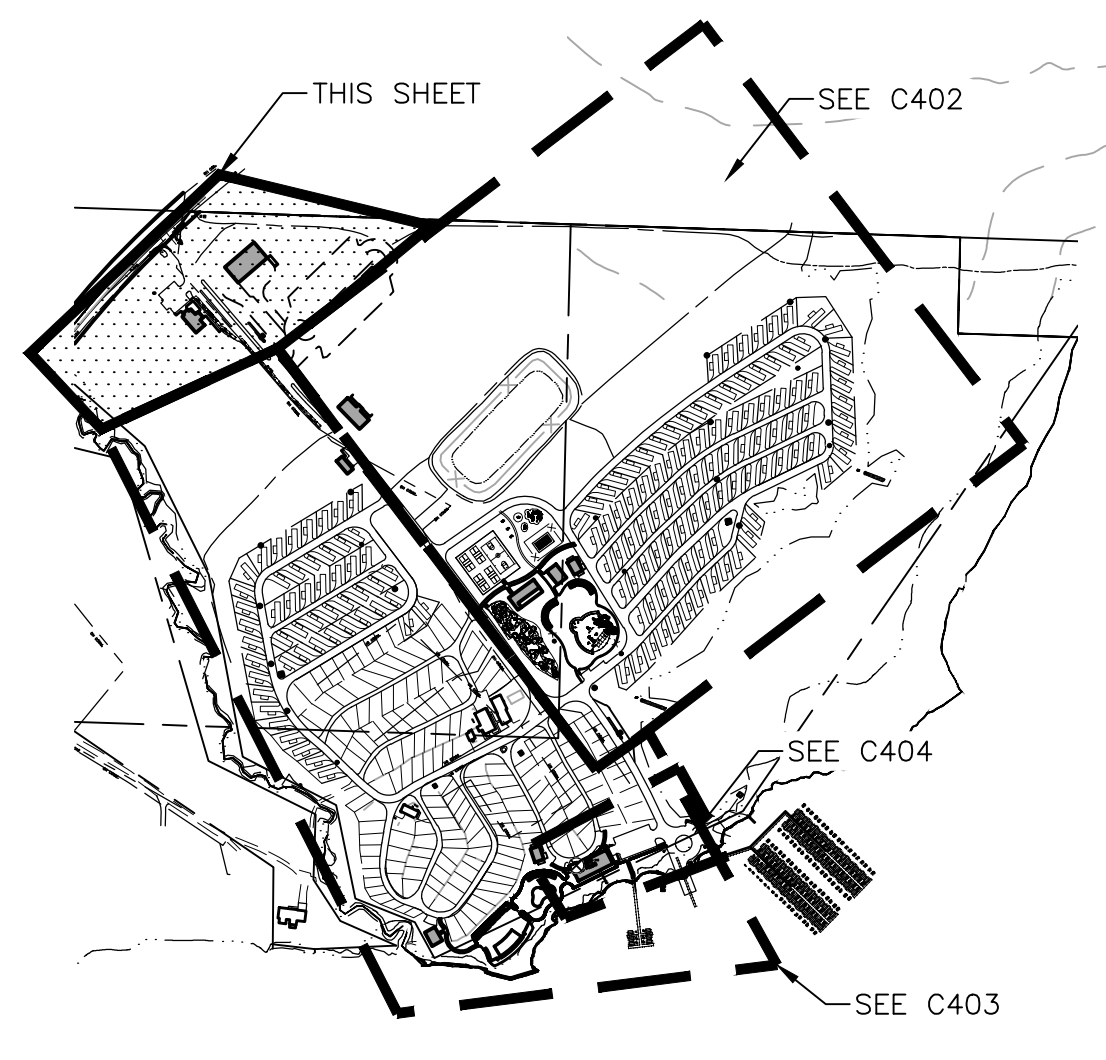
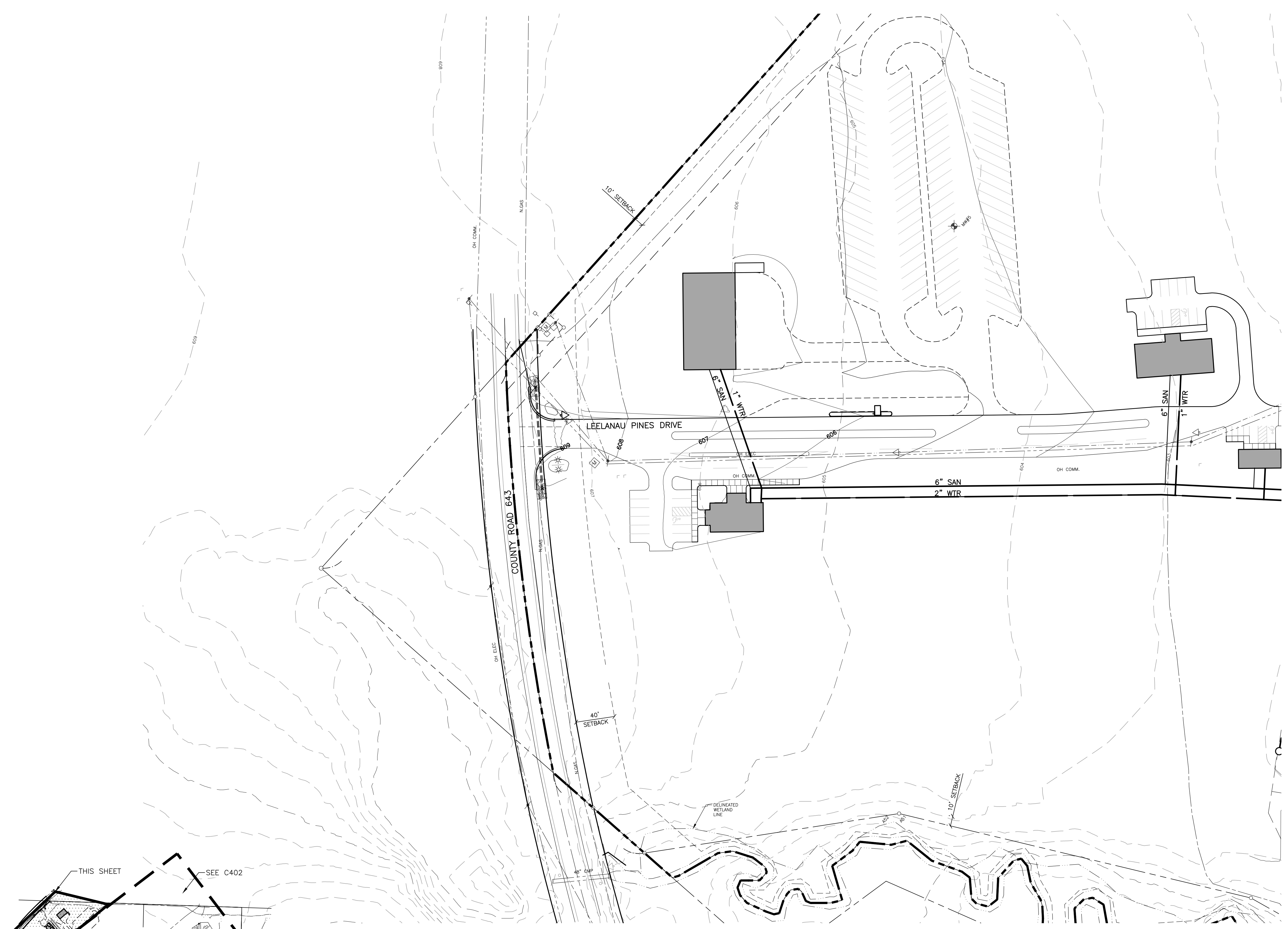
NOTE: PROVIDED CONTOURS ARE IMPORTED FROM THE GIS ESRI DATABASE AND ARE NOT COORDINATED WITH THE BENCHMARK ESTABLISHED BY THE SURVEYOR. ANY DISCREPANCIES NOTED BETWEEN THE HORIZONTAL SURVEYED IMPROVEMENTS AND THE VERTICAL 1' CONTOURS ARE DUE TO SMOOTHING OF GIS INFORMATION

**SYMBOL LEGEND**

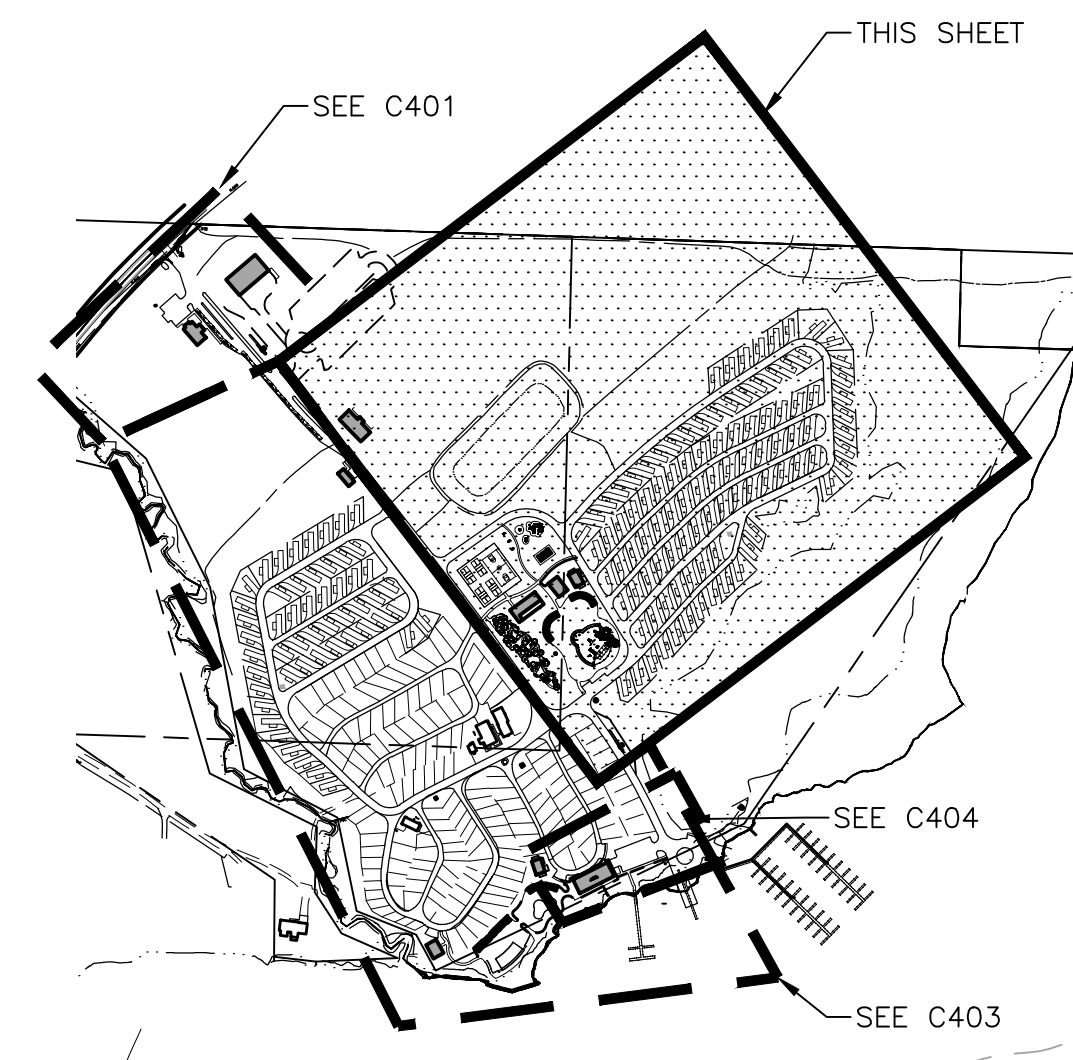
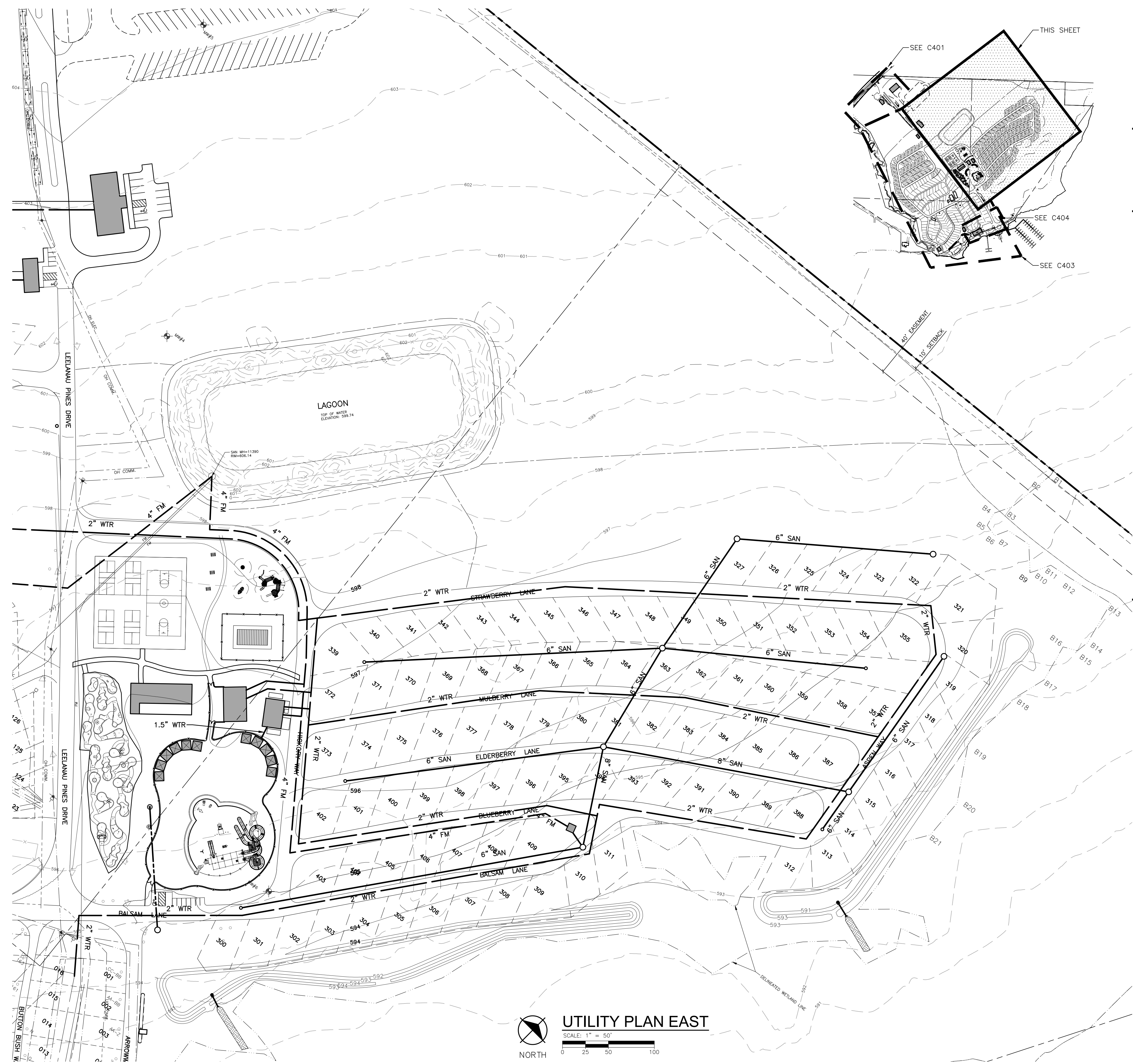
- 8" 6" SAN. 6" SANITARY SEWER & MANHOLE
- WYE & LEAD
- RISER & LEAD
- STANDARD SEWER CLEANOUT
- 12" STORM 12" STORM SEWER & MANHOLE
- CATCH BASIN
- UNDERDRAIN
- 8" WATER 8" WATER MAIN
- VALVE & BOX
- VALVE & CHAMBER
- METER
- PLUG
- STANDARD FIRE HYDRANT ASSEMBLY
- CURB STOP & BOX
- GAS MAIN
- ELECTRIC
- TELEPHONE/FIBER OPTIC

**NOTES**

1. EXISTING UTILITIES LOCATIONS SHOWN ARE APPROXIMATE AND ARE BASED UPON WRITTEN RECORDS RECEIVED FROM THE CAMPGROUND AND UPON ABOVE-GRADE (VISIBLE) SURVEY INFORMATION.
2. PROPOSED UTILITIES SHOWN ARE CONCEPTUAL IN NATURE AND INTENDED TO DEPICT THAT THE SITE WILL BE SERVED BY POTABLE WATER, SANITARY SEWER, STORM SEWER, AND DRY UTILITIES IN ACCORDANCE WITH LEELANAU COUNTY AND THE STATE OF MICHIGAN REGULATIONS AND REQUIREMENTS. ACTUAL SIZE AND LOCATION OF UTILITIES WILL BE DESIGNED AND FINALIZED DURING THE CONSTRUCTION PERMITTING PROCESS WITH THE AGENCIES HAVING JURISDICTION.
3. VERIFY THE HORIZONTAL AND VERTICAL LOCATION OF EXISTING UTILITIES PRIOR TO EXCAVATION.
4. PROTECT AND MAINTAIN SERVICE OF OTHER UTILITIES AT CROSSINGS.
5. DO NOT CONNECT ROOF DRAINS, FOUNDATION DRAINS, AND OTHER CLEAN WATER SERVICES TO THE SANITARY SEWER.
6. END SECTIONS ARE INCLUDED IN PIPE LENGTHS SHOWN.
7. PROVIDE RIPRAP AT ALL END SECTIONS UNLESS OTHERWISE NOTED.
8. PROVIDE AND MAINTAIN INLET FILTERS AT ALL CATCH BASIN INLETS, DURING CONSTRUCTION.
9. WATER MAIN TO HAVE A MINIMUM OF 5.5 FEET OF COVER.
10. PROVIDE A MINIMUM OF EIGHTEEN (18) INCHES OF VERTICAL SEPARATION AND TEN (10) FEET OF HORIZONTAL SEPARATION BETWEEN THE WATER MAIN AND ALL SANITARY AND STORM SEWERS.
11. ADJUST ALL CASTINGS TO FINISH GRADES.
12. PIPE LENGTHS ARE TO CENTER OF STRUCTURES UNLESS NOTED OTHERWISE. ALL PIPE LENGTHS ARE FOR THE CONVENIENCE OF THE CONTRACTOR.







**BENCHMARK**

ELEV. = 591.18  
T-POST AND OLD STAKE FOUND IN LAKE ON EXTENSION OF 1/4 LINE

NOTE: PROVIDED CONTOURS ARE IMPORTED FROM THE GIS ESRI DATABASE AND ARE NOT COORDINATED WITH THE BENCHMARK ESTABLISHED BY THE SURVEYOR. ANY DISCREPANCIES NOTED BETWEEN THE HORIZONTAL SURVEYED IMPROVEMENTS AND THE VERTICAL 1' CONTOURS ARE DUE TO SMOOTHING OF GIS INFORMATION

**SYMBOL LEGEND**

- 8" SAN 6" SANITARY SEWER & MANHOLE
- WYE & LEAD
- RISER & LEAD
- STANDARD SEWER CLEANOUT
- 12" STORM STORM SEWER & MANHOLE
- CATCH BASIN
- UNDERDRAIN
- 8" WATER WATER MAIN
- VALVE & BOX
- VALVE & CHAMBER
- METER
- PLUG
- STANDARD FIRE HYDRANT ASSEMBLY
- CURB STOP & BOX
- GAS MAIN
- ELECTRIC
- TELEPHONE/FIBER OPTIC

**NOTES**

1. EXISTING UTILITIES LOCATIONS SHOWN ARE APPROXIMATE AND ARE BASED UPON WRITTEN RECORDS RECEIVED FROM THE CAMPGROUND AND UPON ABOVE-GRADE (VISIBLE) SURVEY INFORMATION.
2. PROPOSED UTILITIES SHOWN ARE CONCEPTUAL IN NATURE AND INTENDED TO DEPICT THAT THE SITE WILL BE SERVED BY POTABLE WATER, SANITARY SEWER, STORM SEWER, AND DRY UTILITIES IN ACCORDANCE WITH LEELANAU COUNTY AND THE STATE OF MICHIGAN REGULATIONS AND REQUIREMENTS. ACTUAL SIZE AND LOCATION OF UTILITIES WILL BE DESIGNED AND FINALIZED DURING THE CONSTRUCTION PERMITTING PROCESS WITH THE AGENCIES HAVING JURISDICTION.
3. VERIFY THE HORIZONTAL AND VERTICAL LOCATION OF EXISTING UTILITIES PRIOR TO EXCAVATION.
4. PROTECT AND MAINTAIN SERVICE OF OTHER UTILITIES AT CROSSINGS.
5. DO NOT CONNECT ROOF DRAINS, FOUNDATION DRAINS, AND OTHER CLEAN WATER SERVICES TO THE SANITARY SEWER.
6. END SECTIONS ARE INCLUDED IN PIPE LENGTHS SHOWN.
7. PROVIDE RIPRAP AT ALL END SECTIONS UNLESS OTHERWISE NOTED.
8. PROVIDE AND MAINTAIN INLET FILTERS AT ALL CATCH BASIN INLETS, DURING CONSTRUCTION.
9. WATER MAIN TO HAVE A MINIMUM OF 5.5 FEET OF COVER.
10. PROVIDE A MINIMUM OF EIGHTEEN (18) INCHES OF VERTICAL SEPARATION AND TEN (10) FEET OF HORIZONTAL SEPARATION BETWEEN THE WATER MAIN AND ALL SANITARY AND STORM SEWERS.
11. ADJUST ALL CASTINGS TO FINISH GRADES.
12. PIPE LENGTHS ARE TO CENTER OF STRUCTURES UNLESS NOTED OTHERWISE. ALL PIPE LENGTHS ARE FOR THE CONVENIENCE OF THE CONTRACTOR.

**REVISIONS**

**NOT FOR CONSTRUCTION**

9/12/2023	SITE PLAN APPROVAL
9/1/2023	SITE PLAN APPROVAL
9/30/2022	SITE PLAN APPROVAL
9/16/2022	SITE PLAN APPROVAL
8/25/2022	SITE PLAN APPROVAL
8/2/2022	SITE PLAN APPROVAL
6/21/2022	SITE PLAN APPROVAL

Drawn By ADO  
Designer KAG  
Reviewer NB  
Manager JTV

Hard copy is intended to be 24"x36" when plotted. Scale(s) indicated and graphic quality may not be accurate for any other size.

PROJECT NO.  
211505  
SHEET NO.

**C402**



**MISS DIG**  
811  
3 full working days before you dig;  
1-800-482-7171  
on the web at: www.missdig.org



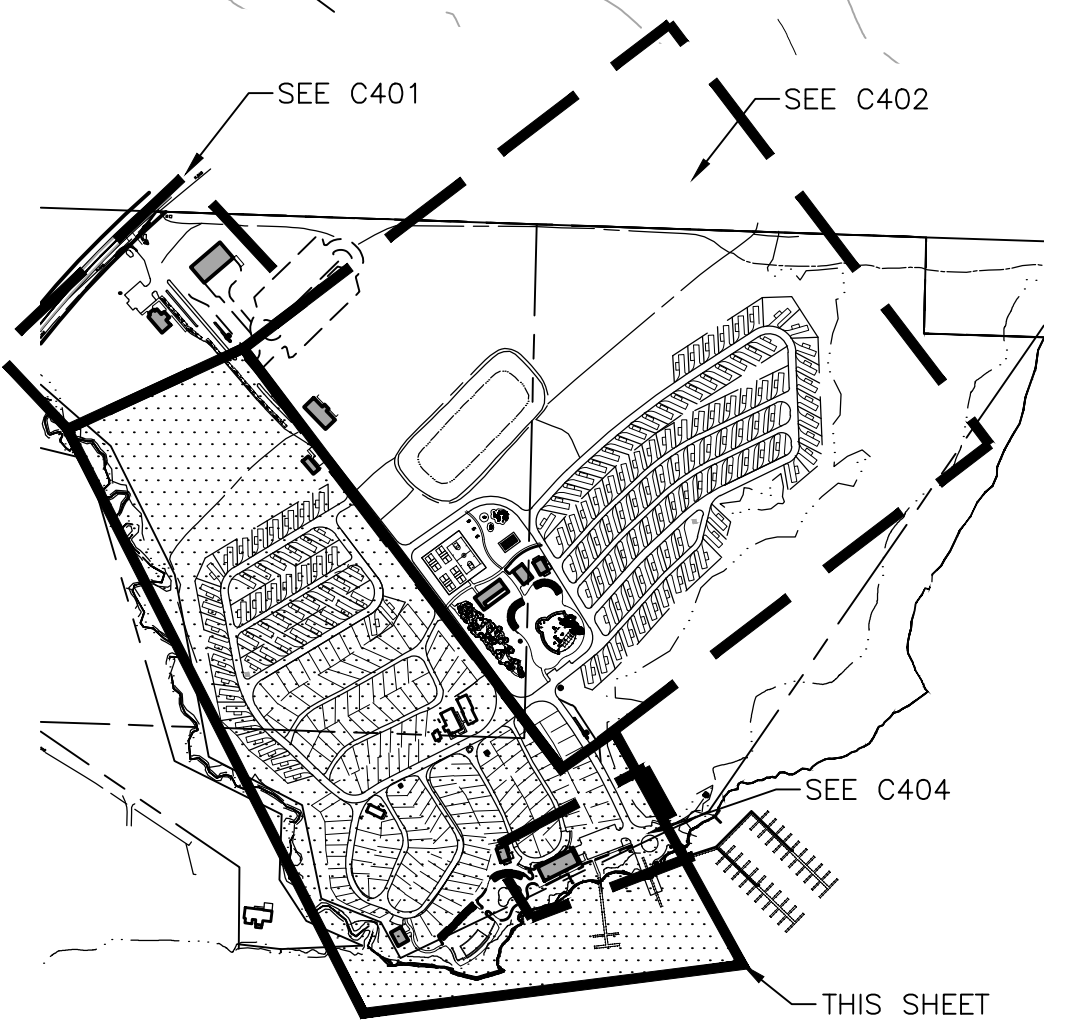
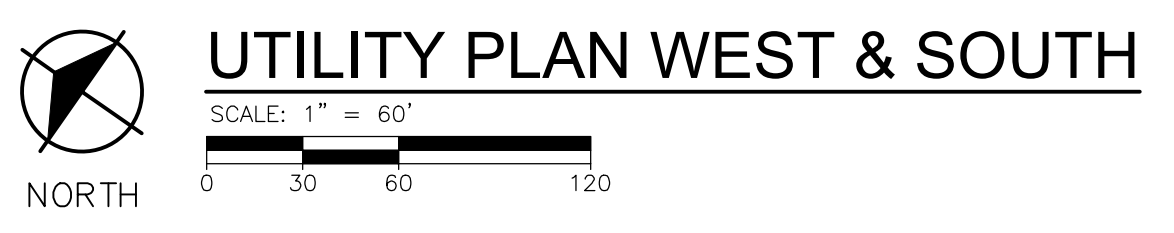
**NOTES**

- EXISTING UTILITIES LOCATIONS SHOWN ARE APPROXIMATE AND ARE BASED UPON WRITTEN RECORDS RECEIVED FROM THE CAMPGROUND AND UPON ABOVE-GRADE (VISIBLE) SURVEY INFORMATION.
- PROPOSED UTILITIES SHOWN ARE CONCEPTUAL IN NATURE AND INTENDED TO DEPICT THAT THE SITE WILL BE SERVED BY POTABLE WATER, SANITARY SEWER, STORM SEWER, AND DRY UTILITIES IN ACCORDANCE WITH LEELANAU COUNTY AND THE STATE OF MICHIGAN REGULATIONS AND REQUIREMENTS. ACTUAL SIZE AND LOCATION OF UTILITIES WILL BE DESIGNED AND FINALIZED DURING THE CONSTRUCTION PERMITTING PROCESS WITH THE AGENCIES HAVING JURISDICTION.
- VERIFY THE HORIZONTAL AND VERTICAL LOCATION OF EXISTING UTILITIES PRIOR TO EXCAVATION.
- PROTECT AND MAINTAIN SERVICE OF OTHER UTILITIES AT CROSSINGS.
- DO NOT CONNECT ROOF DRAINS, FOUNDATION DRAINS, AND OTHER CLEAN WATER SERVICES TO THE SANITARY SEWER.
- END SECTIONS ARE INCLUDED IN PIPE LENGTHS SHOWN.
- PROVIDE RIPRAP AT ALL END SECTIONS UNLESS OTHERWISE NOTED.
- PROVIDE AND MAINTAIN INLET FILTERS AT ALL CATCH BASIN INLETS, DURING CONSTRUCTION.
- WATER MAIN TO HAVE A MINIMUM OF 5.5 FEET OF COVER.
- PROVIDE A MINIMUM OF EIGHTEEN (18) INCHES OF VERTICAL SEPARATION AND TEN (10) FEET OF HORIZONTAL SEPARATION BETWEEN THE WATER MAIN AND ALL SANITARY AND STORM SEWERS.
- ADJUST ALL CASTINGS TO FINISH GRADES.
- PIPE LENGTHS ARE TO CENTER OF STRUCTURES UNLESS NOTED OTHERWISE. ALL PIPE LENGTHS ARE FOR THE CONVENIENCE OF THE CONTRACTOR.

**BENCHMARK**  
ELEV = 591.18  
T-POST AND OLD STAKE FOUND IN LAKE ON EXTENSION OF 1/4 LINE  
NOTE: PROVIDED CONTOURS ARE IMPORTED FROM THE GIS ESRI DATABASE AND ARE NOT COORDINATED WITH THE BENCHMARK ESTABLISHED BY THE SURVEYOR. ANY DISCREPANCIES NOTED BETWEEN THE HORIZONTAL SURVEYED IMPROVEMENTS AND THE VERTICAL 1' CONTOURS ARE DUE TO SMOOTHING OF GIS INFORMATION

**SYMBOL LEGEND**

8" SAN.	SANITARY SEWER & MANHOLE		VALVE & CHAMBER
	WYE & LEAD		METER
	RISER & LEAD		PLUG
	STANDARD SEWER CLEANOUT		STANDARD FIRE HYDRANT ASSEMBLY
12" STORM	STORM SEWER & MANHOLE		CURB STOP & BOX
	CATCH BASIN		GAS MAIN
	UNDERDRAIN		ELECTRIC
8" WATER	WATER MAIN		TELEPHONE/FIBER OPTIC
	VALVE & BOX		



**REVISIONS**

**NOT FOR CONSTRUCTION**

9/12/2023	SITE PLAN APPROVAL
9/1/2023	SITE PLAN APPROVAL
9/30/2022	SITE PLAN APPROVAL
9/16/2022	SITE PLAN APPROVAL
8/25/2022	SITE PLAN APPROVAL
8/2/2022	SITE PLAN APPROVAL
6/21/2022	SITE PLAN APPROVAL

Drawn By ADO  
Designer KAG  
Reviewer NB  
Manager JTV

Hard copy is intended to be 24"x36" when plotted. Scale(s) indicated and graphic quality may not be accurate for any other size.

PROJECT NO.  
**211505**  
SHEET NO.

**C403**

PLOT INFO: Z:\2023\211505\CADD\C403\211505.DWG LAYOUT C403 DATE: 9/12/2023 TIME: 12:59:14 PM USER: IGBIBSON



**MISS DIG**  
811  
3 full working days before you dig:  
1-800-482-7171  
on the web at: www.missdig.org

REVISIONS

**NOT FOR CONSTRUCTION**

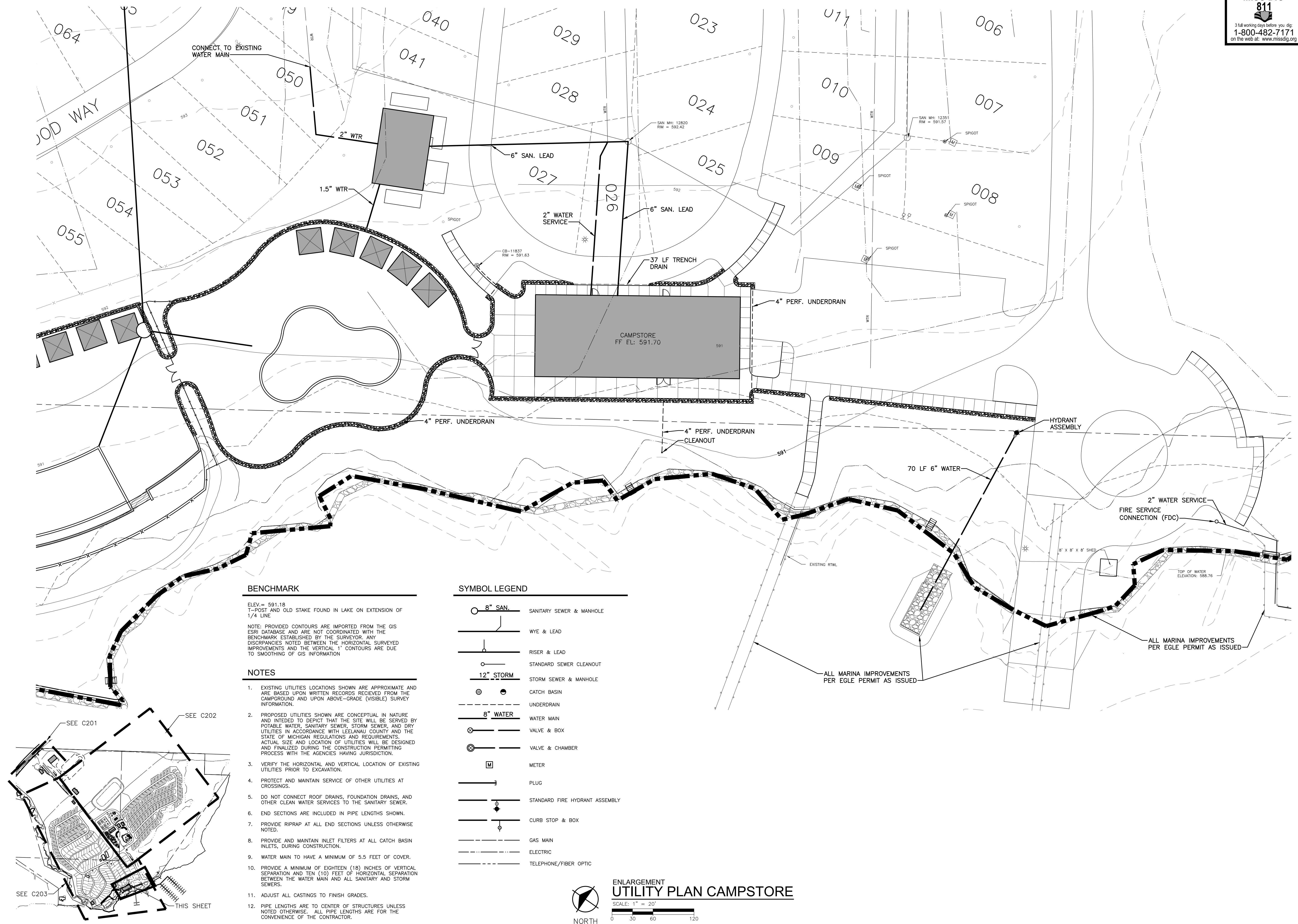
9/12/2023	SITE PLAN APPROVAL
9/1/2023	SITE PLAN APPROVAL
9/30/2022	SITE PLAN APPROVAL
9/16/2022	SITE PLAN APPROVAL
8/25/2022	SITE PLAN APPROVAL
8/2/2022	SITE PLAN APPROVAL
6/21/2022	SITE PLAN APPROVAL

Drawn By: ADO  
Designer: KAG  
Reviewer: NB  
Manager: JTV

Hard copy is intended to be 24"x36" when plotted. Scale(s) indicated and graphic quality may not be accurate for any other size.

PROJECT NO.  
**211505**  
SHEET NO.

**C404**



**BENCHMARK**

ELEV. = 591.18  
T-POST AND OLD STAKE FOUND IN LAKE ON EXTENSION OF 1/4 LINE  
NOTE: PROVIDED CONTOURS ARE IMPORTED FROM THE GIS ESRI DATABASE AND ARE NOT COORDINATED WITH THE BENCHMARK ESTABLISHED BY THE SURVEYOR. ANY DISCREPANCIES NOTED BETWEEN THE HORIZONTAL SURVEYED IMPROVEMENTS AND THE VERTICAL 1" CONTOURS ARE DUE TO SMOOTHING OF GIS INFORMATION

**NOTES**

- EXISTING UTILITIES LOCATIONS SHOWN ARE APPROXIMATE AND ARE BASED UPON WRITTEN RECORDS RECEIVED FROM THE CAMPGROUND AND UPON ABOVE-GRADE (VISIBLE) SURVEY INFORMATION.
- PROPOSED UTILITIES SHOWN ARE CONCEPTUAL IN NATURE AND INTENDED TO DEPICT THAT THE SITE WILL BE SERVED BY POTABLE WATER, SANITARY SEWER, STORM SEWER, AND DRY UTILITIES IN ACCORDANCE WITH LEELANAU COUNTY AND THE STATE OF MICHIGAN REGULATIONS AND REQUIREMENTS. ACTUAL SIZE AND LOCATION OF UTILITIES WILL BE DESIGNED AND FINALIZED DURING THE CONSTRUCTION PERMITTING PROCESS WITH THE AGENCIES HAVING JURISDICTION.
- VERIFY THE HORIZONTAL AND VERTICAL LOCATION OF EXISTING UTILITIES PRIOR TO EXCAVATION.
- PROTECT AND MAINTAIN SERVICE OF OTHER UTILITIES AT CROSSINGS.
- DO NOT CONNECT ROOF DRAINS, FOUNDATION DRAINS, AND OTHER CLEAN WATER SERVICES TO THE SANITARY SEWER.
- END SECTIONS ARE INCLUDED IN PIPE LENGTHS SHOWN.
- PROVIDE RIPRAP AT ALL END SECTIONS UNLESS OTHERWISE NOTED.
- PROVIDE AND MAINTAIN INLET FILTERS AT ALL CATCH BASIN INLETS, DURING CONSTRUCTION.
- WATER MAIN TO HAVE A MINIMUM OF 5.5 FEET OF COVER.
- PROVIDE A MINIMUM OF EIGHTEEN (18) INCHES OF VERTICAL SEPARATION AND TEN (10) FEET OF HORIZONTAL SEPARATION BETWEEN THE WATER MAIN AND ALL SANITARY AND STORM SEWERS.
- ADJUST ALL CASTINGS TO FINISH GRADES.
- PIPE LENGTHS ARE TO CENTER OF STRUCTURES UNLESS NOTED OTHERWISE. ALL PIPE LENGTHS ARE FOR THE CONVENIENCE OF THE CONTRACTOR.

**SYMBOL LEGEND**

	8" SAN.	SANITARY SEWER & MANHOLE
	WYE & LEAD	
	RISER & LEAD	
	STANDARD SEWER CLEANOUT	
	12" STORM	STORM SEWER & MANHOLE
	CATCH BASIN	
	UNDERDRAIN	
	8" WATER	WATER MAIN
	VALVE & BOX	
	VALVE & CHAMBER	
	METER	
	PLUG	
	STANDARD FIRE HYDRANT ASSEMBLY	
	CURB STOP & BOX	
	GAS MAIN	
	ELECTRIC	
	TELEPHONE/FIBER OPTIC	



**ENLARGEMENT  
UTILITY PLAN CAMPSTORE**

SCALE: 1" = 20'  
0 30 60 120

PLOT INFO: Z:\2023\211505\CADD\C404\211505.DWG LAYOUT C404 DATE: 9/12/2023 TIME: 12:46:36 PM USER: KIGIBSON





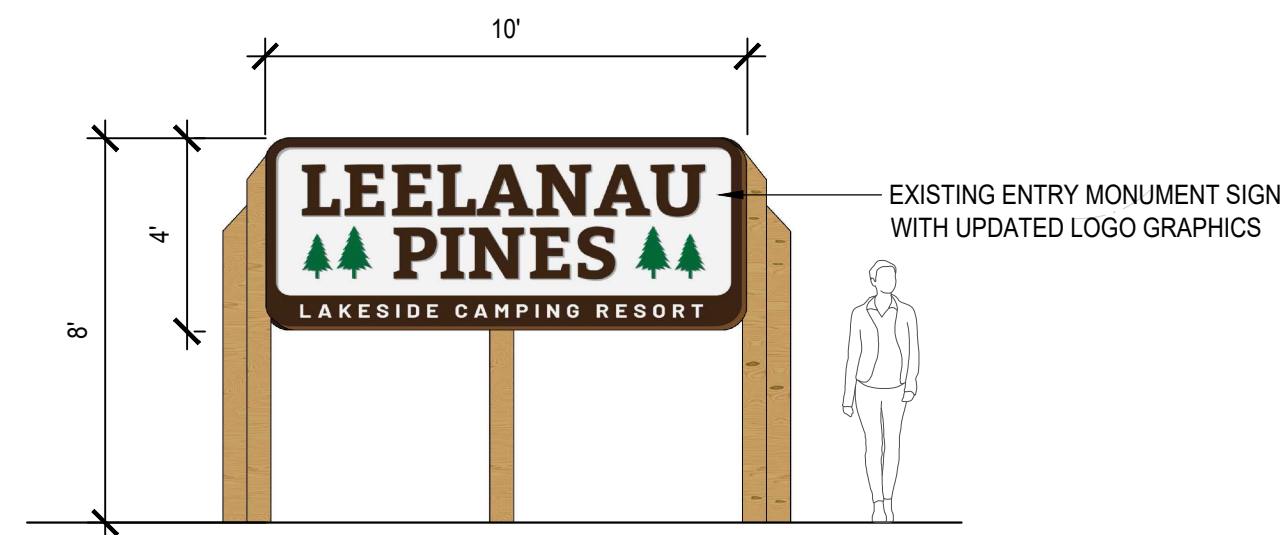
EXISTING ENTRY MONUMENT SIGN



UPDATED ENTRY MONUMENT SIGN PERSPECTIVE VIEW A

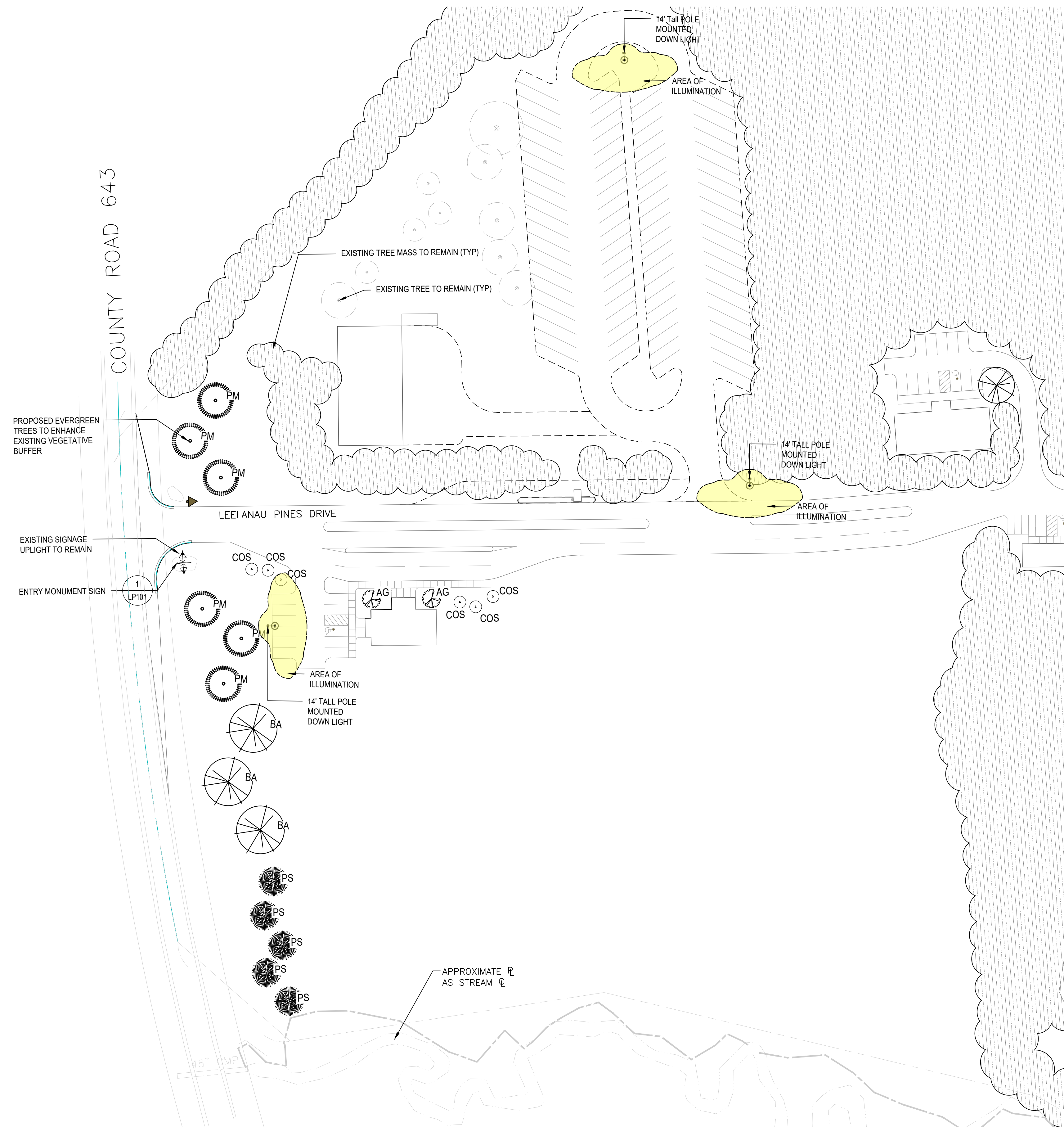


UPDATED ENTRY MONUMENT SIGN PERSPECTIVE VIEW B



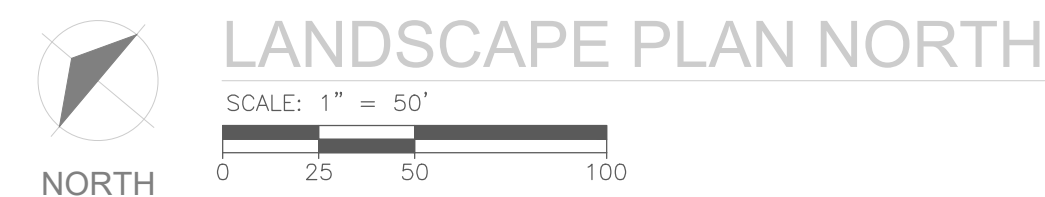
UPDATED ENTRY MONUMENT SIGN ELEVATION

**1 ENTRY MONUMENT SIGN**  
ELEVATION SCALE: 1/4"=1'-0"



**NOTES**

1. ACTUAL PLANT LOCATIONS TO BE PLACED TO BEST ACCOMMODATE AS-BUILT SITE CONDITIONS.
2. NOT ALL EXISTING TREES AND PLANTS IN THE PROJECT AREA MAY BE SHOWN
3. TO THE GREATEST EXTENT POSSIBLE EXISTING VEGETATION WILL BE RETAINED, NOT REQUIRING LANDSCAPING.
4. LIGHTING NOTE: THE INTENT OF THE CAMPGROUND IS TO HAVE LIMITED ARTIFICIAL OUTDOOR LIGHTING IN KEEPING WITH THE CAMPING EXPERIENCE. OUTDOOR LIGHTING TO BE DARK SKY APPROVED WITH FULL CUT-OFF FIXTURES. LIGHTING WILL BE USED TO ENHANCE VISITOR EXPERIENCE AND IMPROVE SAFETY. IT WILL COMPLY WITH LOCAL, STATE AND FEDERAL CODES, AND WILL PROMOTE DARK NIGHT SKY PRESERVATION. OUTDOOR ILLUMINATION WILL BE LOW INTENSITY AND WILL BE PROVIDED ONLY WHERE NECESSARY FOR SAFETY. THIS INCLUDES THE ENTRY SIGN, MAJOR INTERSECTIONS, AND BUILDINGS. EXISTING LIGHTING TO REMAIN.
5. SIGNAGE NOTE: AN INTEGRATED SIGNAGE SYSTEM COMMUNICATING CAMPGROUND REGULATORY/ENFORCEABLE REQUIREMENTS, DIRECTIONAL/WAYFINDING INFORMATION, SAFETY/WARNING, IDENTITY INFORMATION, AND INTERPRETIVE INFORMATION TO CAMPGROUND GUESTS. SIGNAGE WILL BE LOCATED THROUGHOUT THE CAMPGROUND GENERALLY OUT OF VIEW FROM PUBLIC RIGHT-OF-WAY OR ADJACENT PROPERTIES. THE EXISTING IDENTITY/ENTRANCE SIGN AND ITS ASSOCIATED LIGHTING WILL REMAIN AS IS WITH ONLY THE SIGN ITSELF BEING LIT BY THE LAMP SOURCE. BUILDING IDENTIFICATION SIGNAGE LOCATED ON BUILDINGS WILL BE DOWN-LIT BY WALL-MOUNTED LIGHTS. ALL OTHER SIGNAGE WILL NOT BE LIT.



MISS DIG  
811  
3 full working days before you dig  
1-800-482-7171  
on the web at: www.missdig.org

**NORTHGATE RESORTS**  
38 COMMERCE AVE. SW  
SUITE 200  
GRAND RAPIDS MI, 49503



REVISIONS

NOT FOR CONSTRUCTION

09/12/2023	LANDSCAPE PLAN
08/22/2023	LANDSCAPE PLAN
10/21/2022	LANDSCAPE PLAN

Drawn By KCH  
Designer KCH  
Reviewer  
Manager

Hard copy is intended to be 24"x36" when plotted. Scale(s) indicated and graphic quality may not be accurate for any other size.

PROJECT NO.

SHEET NO.

**L101**

© Copyright 2022  
All Rights Reserved







REVISIONS

NOT FOR CONSTRUCTION

09/12/2023	LANDSCAPE PLAN
08/22/2023	LANDSCAPE PLAN
10/21/2022	LANDSCAPE PLAN

Drawn By: KCH  
Designer: KCH  
Reviewer:  
Manager:

Hard copy is intended to be 24"x36" when plotted. Scale(s) indicated and graphic quality may not be accurate for any other size.

PROJECT NO.

SHEET NO.

**L102**



**NOTES**

1. ACTUAL PLANT LOCATIONS TO BE PLACED TO BEST ACCOMMODATE AS-BUILT SITE CONDITIONS.
2. NOT ALL EXISTING TREES AND PLANTS IN THE PROJECT AREA MAY BE SHOWN
3. TO THE GREATEST EXTENT POSSIBLE EXISTING VEGETATION WILL BE RETAINED, NOT REQUIRING LANDSCAPING.
4. LIGHTING NOTE: THE INTENT OF THE CAMPGROUND IS TO HAVE LIMITED ARTIFICIAL OUTDOOR LIGHTING IN KEEPING WITH THE CAMPING EXPERIENCE. OUTDOOR LIGHTING TO BE DARK SKY APPROVED WITH FULL CUT-OFF FIXTURES. LIGHTING WILL BE USED TO ENHANCE VISITOR EXPERIENCE AND IMPROVE SAFETY. IT WILL COMPLY WITH LOCAL, STATE AND FEDERAL CODES, AND WILL PROMOTE DARK NIGHT SKY PRESERVATION. OUTDOOR ILLUMINATION WILL BE LOW INTENSITY AND WILL BE PROVIDED ONLY WHERE NECESSARY FOR SAFETY. THIS INCLUDES THE ENTRY SIGN, MAJOR INTERSECTIONS, AND BUILDINGS. EXISTING LIGHTING TO REMAIN.
5. SIGNAGE NOTE: AN INTEGRATED SIGNAGE SYSTEM COMMUNICATING CAMPGROUND REGULATORY/ENFORCEABLE REQUIREMENTS, DIRECTIONAL/WAYFINDING INFORMATION, SAFETY/WARNING, IDENTITY INFORMATION, AND INTERPRETIVE INFORMATION TO CAMPGROUND GUESTS. SIGNAGE WILL BE LOCATED THROUGHOUT THE CAMPGROUND GENERALLY OUT OF VIEW FROM PUBLIC RIGHT-OF-WAY OR ADJACENT PROPERTIES. THE EXISTING IDENTITY/ENTRANCE SIGN AND ITS ASSOCIATED LIGHTING WILL REMAIN AS IS WITH ONLY THE SIGN ITSELF BEING LIT BY THE LAMP SOURCE. BUILDING IDENTIFICATION SIGNAGE LOCATED ON BUILDINGS WILL BE DOWN-LIT BY WALL-MOUNTED LIGHTS. ALL OTHER SIGNAGE WILL NOT BE LIT.



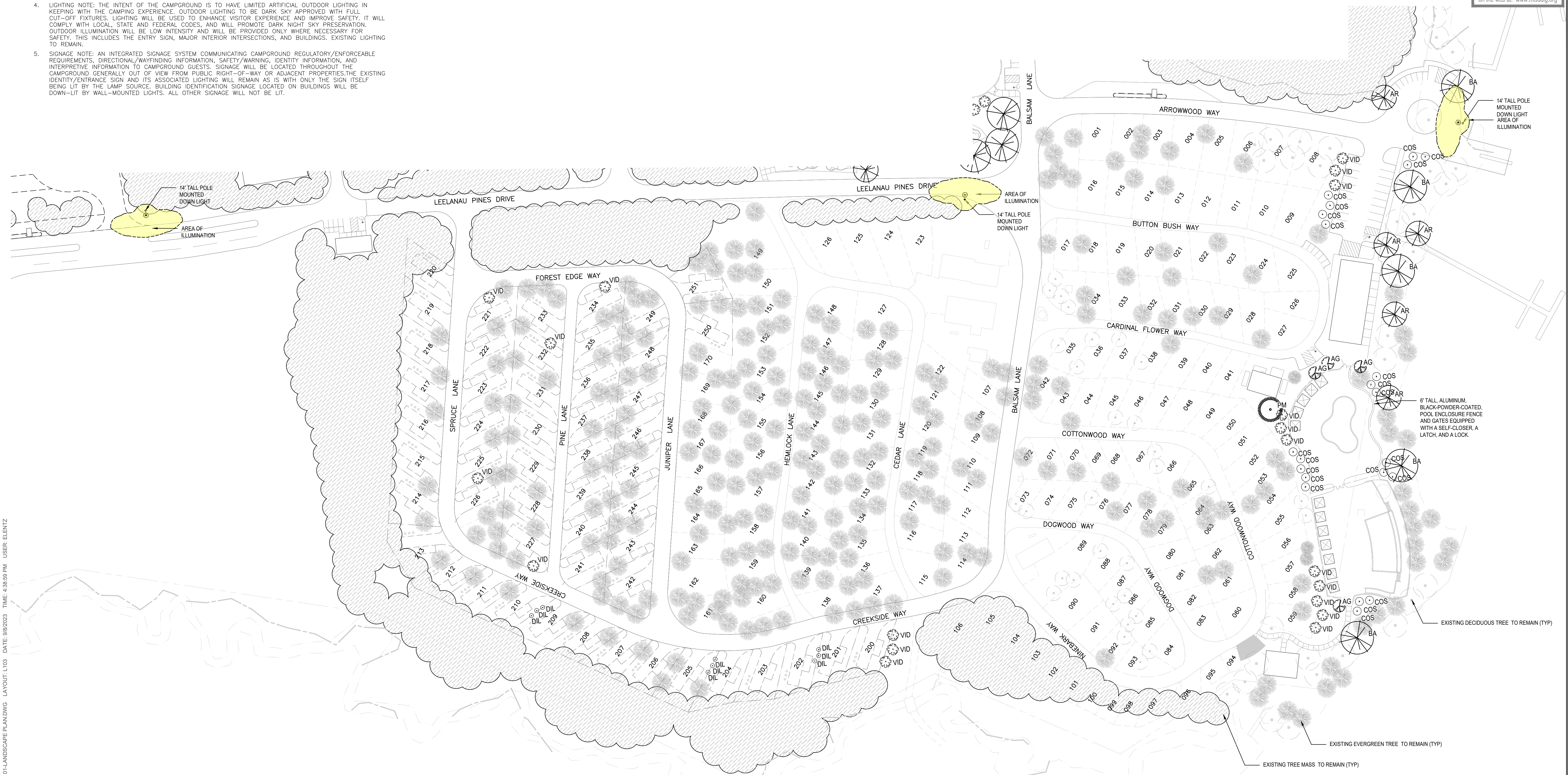
PLOT INFO: G:SHARED DRIVERSMGR DESIGN:IMP:LEELANAU PINESADRAWINGS:001 CAD:PC:OTS:LNPL:101:LANDSCAPE PLANNING LAYOUT: L102 DATE: 08/22/2023 TIME: 4:38:20 PM USER: ELENZ



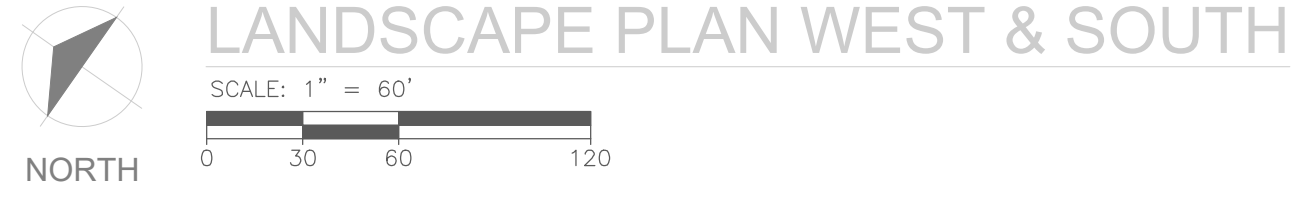


**NOTES**

1. ACTUAL PLANT LOCATIONS TO BE PLACED TO BEST ACCOMMODATE AS-BUILT SITE CONDITIONS.
2. NOT ALL EXISTING TREES AND PLANTS IN THE PROJECT AREA MAY BE SHOWN.
3. TO THE GREATEST EXTENT POSSIBLE EXISTING VEGETATION WILL BE RETAINED, NOT REQUIRING LANDSCAPING.
4. LIGHTING NOTE: THE INTENT OF THE CAMPGROUND IS TO HAVE LIMITED ARTIFICIAL OUTDOOR LIGHTING IN KEEPING WITH THE CAMPING EXPERIENCE. OUTDOOR LIGHTING TO BE DARK SKY APPROVED WITH FULL CUT-OFF FIXTURES. LIGHTING WILL BE USED TO ENHANCE VISITOR EXPERIENCE AND IMPROVE SAFETY. IT WILL COMPLY WITH LOCAL, STATE AND FEDERAL CODES, AND WILL PROMOTE DARK NIGHT SKY PRESERVATION. OUTDOOR ILLUMINATION WILL BE LOW INTENSITY AND WILL BE PROVIDED ONLY WHERE NECESSARY FOR SAFETY. THIS INCLUDES THE ENTRY SIGN, MAJOR INTERIOR INTERSECTIONS, AND BUILDINGS. EXISTING LIGHTING TO REMAIN.
5. SIGNAGE NOTE: AN INTEGRATED SIGNAGE SYSTEM COMMUNICATING CAMPGROUND REGULATORY/ENFORCEABLE REQUIREMENTS, DIRECTIONAL/WAYFINDING INFORMATION, SAFETY/WARNING, IDENTITY INFORMATION, AND INTERPRETIVE INFORMATION TO CAMPGROUND GUESTS. SIGNAGE WILL BE LOCATED THROUGHOUT THE CAMPGROUND GENERALLY OUT OF VIEW FROM PUBLIC RIGHT-OF-WAY OR ADJACENT PROPERTIES. THE EXISTING IDENTITY/ENTRANCE SIGN AND ITS ASSOCIATED LIGHTING WILL REMAIN AS IS WITH ONLY THE SIGN ITSELF BEING LIT BY THE LAMP SOURCE. BUILDING IDENTIFICATION SIGNAGE LOCATED ON BUILDINGS WILL BE DOWN-LIT BY WALL-MOUNTED LIGHTS. ALL OTHER SIGNAGE WILL NOT BE LIT.



PLOT INFO: G:SHARED DRIVES/ENR DESIGN/IMP LEELANAU PINES/DR/RAWINGS/01 CAD/PLT/01/101 LANDSCAPE PLANNING LAYOUT L103 DATE: 08/22/2023 TIME: 4:38:59 PM USER: ELENZ



**NORTHGATE RESORTS**  
38 COMMERCE AVE. SW  
SUITE 200  
GRAND RAPIDS MI, 49503



**REVISIONS**

NOT FOR CONSTRUCTION

09/12/2023	LANDSCAPE PLAN
08/22/2023	LANDSCAPE PLAN
10/21/2022	LANDSCAPE PLAN

Drawn By: KCH  
Designer: KCH  
Reviewer:  
Manager:

Hard copy is intended to be 24"x36" when plotted. Scale(s) indicated and graphic quality may not be accurate for any other size.

PROJECT NO.

SHEET NO.

L103

©Copyright 2022  
All Rights Reserved





PLANT LIST					
SYMBOL	ID	LATIN NAME	COMMON NAME	SIZE	REMARKS
	AG	Amelanchier x grandiflora 'Autumn Brilliance'	AUTUMN BRILLIANCE SERVICEBERRY	6'-8" Tall, Multi Stem	#15 CONT.
	AR	Acer rubrum	RED MAPLE	2.5" CAL, 12'-14' Tall	B&B
	BA	Betula alleghaniensis	YELLOW BIRCH	2.5" CAL, 12'-14' Tall	B&B
	PA	Picea mariana	BLACK SPRUCE	6'-8" Tall x 4'-5" Wide	B&B
	PS	Pinus strobus	EASTERN WHITE PINE	6'-8" Tall x 4'-5" Wide	B&B
	COS	Cornus sericea	REDOSIER DOGWOOD	2-3' Tall	#7 CONT.
	DIL	Diervilla lonicera	BUSH HONEYSUCKLE	18" Tall	#3 CONT.
	VID	Viburnum dentatum	ARROWWOOD VIBURNUM	3-4' Tall	#10 CONT.

Project	Catalog #	Type
Prepared by	Notes	Date



**McGraw-Edison**  
**GLEON Galleon**  
 Area / Site Luminaire

**Product Features**

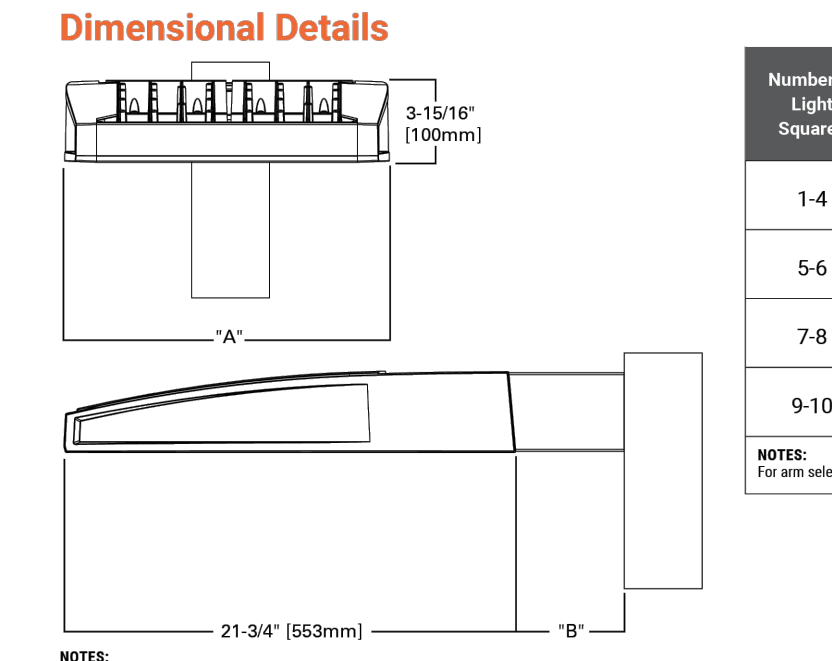
- Luminaire Technology
- Light Abolition™
- BAA

- Interactive Menu**
- Ordering Information page 2
  - Mounting Details page 3
  - Optical Distributions page 4
  - Product Specifications page 4
  - Energy and Performance Data page 4
  - Control Options page 9



- Quick Facts**
- Lumen packages range from 4,200 - 80,800 (34W - 640W)
  - Efficacy up to 156 lumens per watt
  - Options to meet Buy American and other domestic preference requirements

- Connected Systems**
- WaveLinX
  - Enlighted



Number of Light Squares	"A" Width	"B" Standard Arm Length	"B" Extended Arm Length	"B" QM Arm Length	"B" QM Length	"B" OMA Length
1-4	15-1/2"	7'	10'	10-5/8'	-	16-9/16'
5-6	21-5/8"	7'	10'	10-5/8'	-	16-9/16'
7-8	27-5/8"	7'	13'	10-5/8'	10-5/16'	-
9-10	33-3/4"	7'	16'	-	10-5/16'	-

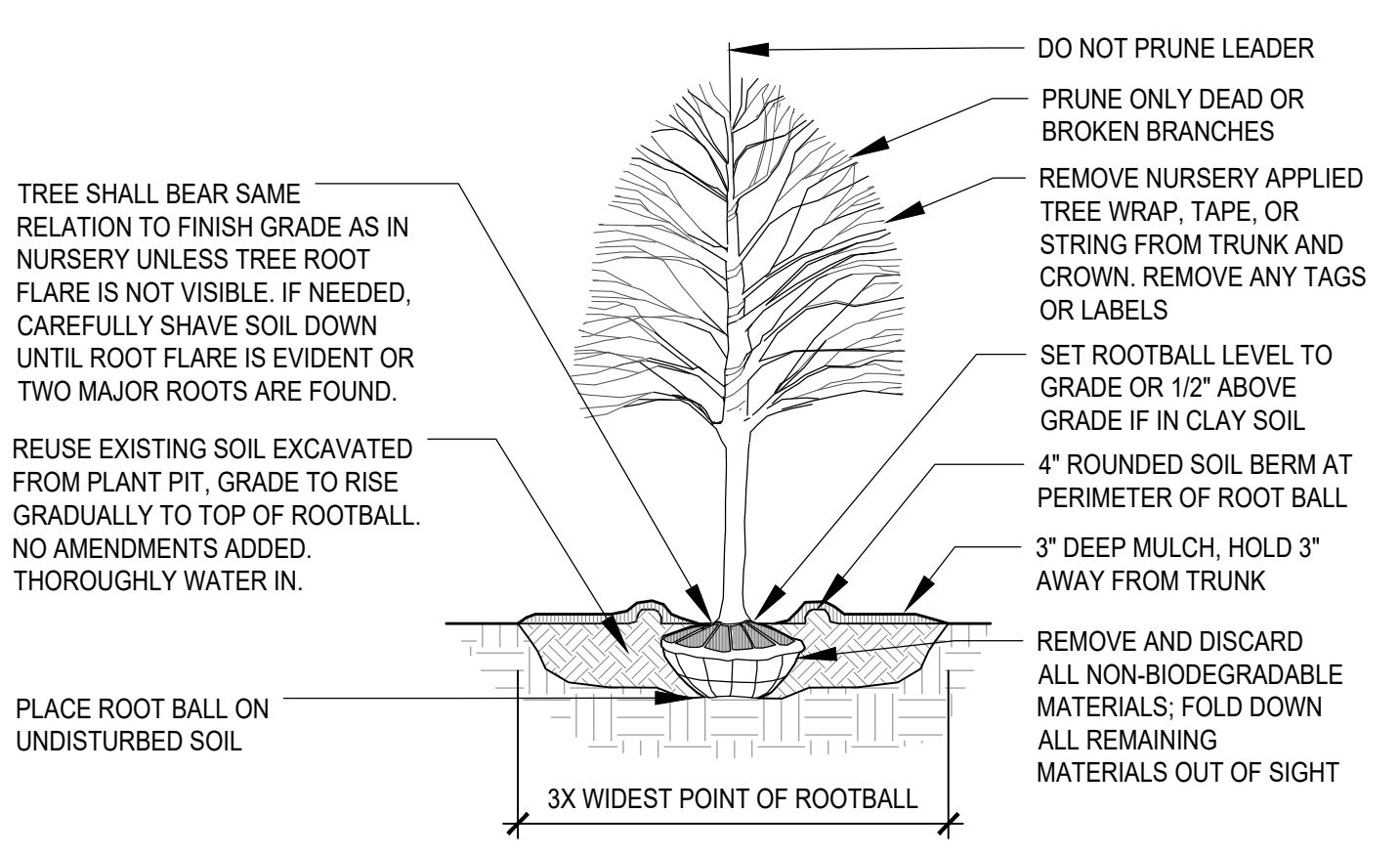
NOTE: For arm selection requirements and additional line art, see Mounting Details section.

**COOPER** Lighting Solutions  
 PS50002DEN page 1  
 May 24, 2023 7:00 PM

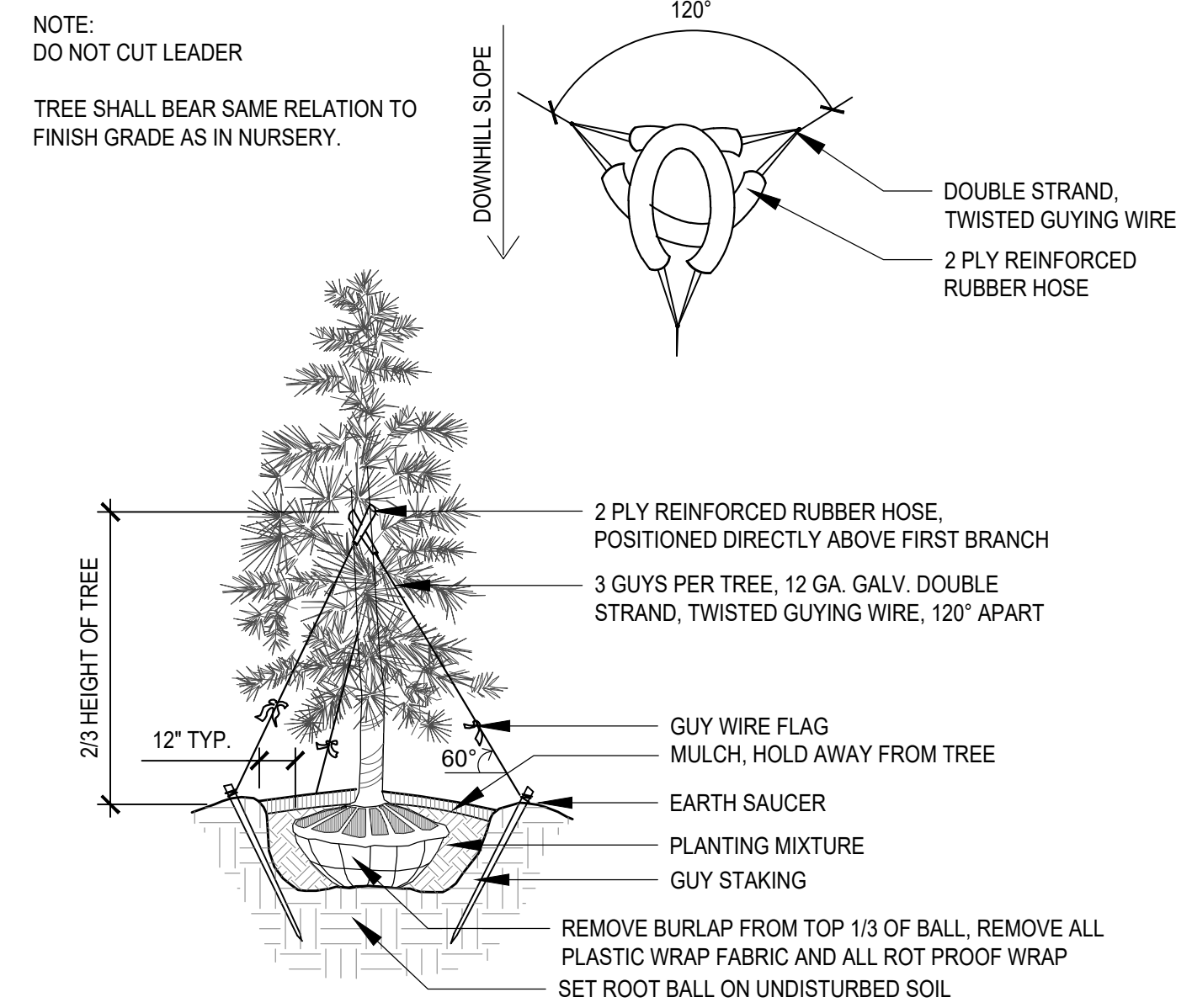
**4 AREA LIGHT**  
 CUT SHEET NOT TO SCALE

NOTE:  
 TREE SHALL BEAR SAME RELATION TO FINISH GRADE AS IN NURSERY.

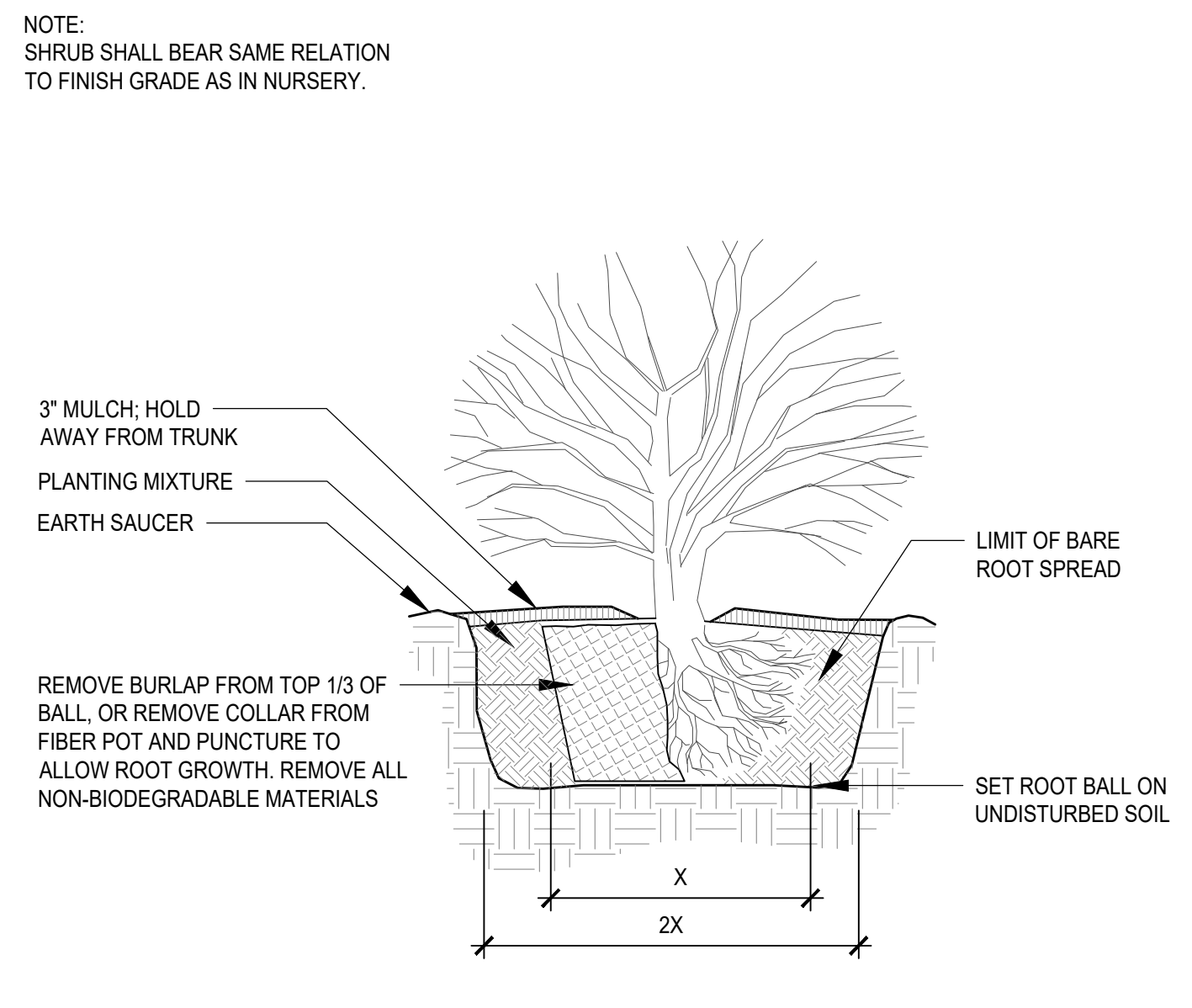
DO NOT STAKE UNLESS PLANTED ON SLOPE, IN HEAVY CLAY SOIL, OR WINDY CONDITIONS.



**1 DECIDUOUS TREE PLANTING**  
 SECTION NOT TO SCALE



**2 EVERGREEN TREE PLANTING**  
 SECTION NOT TO SCALE



**3 SHRUB PLANTING**  
 SECTION NOT TO SCALE

PLANT LIST & DETAILS

MISS DIG  
 811  
 3 full working days before you dig  
 1-800-482-7171  
 on the web at: www.missdig.org

NORTHGATE RESORTS  
 38 COMMERCE AVE. SW  
 SUITE 200  
 GRAND RAPIDS MI, 49503



REVISIONS

NOT FOR CONSTRUCTION

09/12/2023	LANDSCAPE PLAN
08/22/2023	LANDSCAPE PLAN
10/21/2022	LANDSCAPE PLAN

Drawn By KCH  
 Designer KCH  
 Reviewer  
 Manager

Hard copy is intended to be 24"x36" when plotted. Scale(s) indicated and graphic quality may not be accurate for any other size.

PROJECT NO.

SHEET NO.

**L104**



PLOT INFO: G:\SHARED DRIVERS\DESIGN\LP\_LEELAMU PINESADRAWINGS\01 CAD\PCS\LNPL\_101\_LANDSCAPE PLANNING\_LAYOUT.L104 DATE: 9/8/2023 TIME: 4:45:14 PM USER: ELENZ