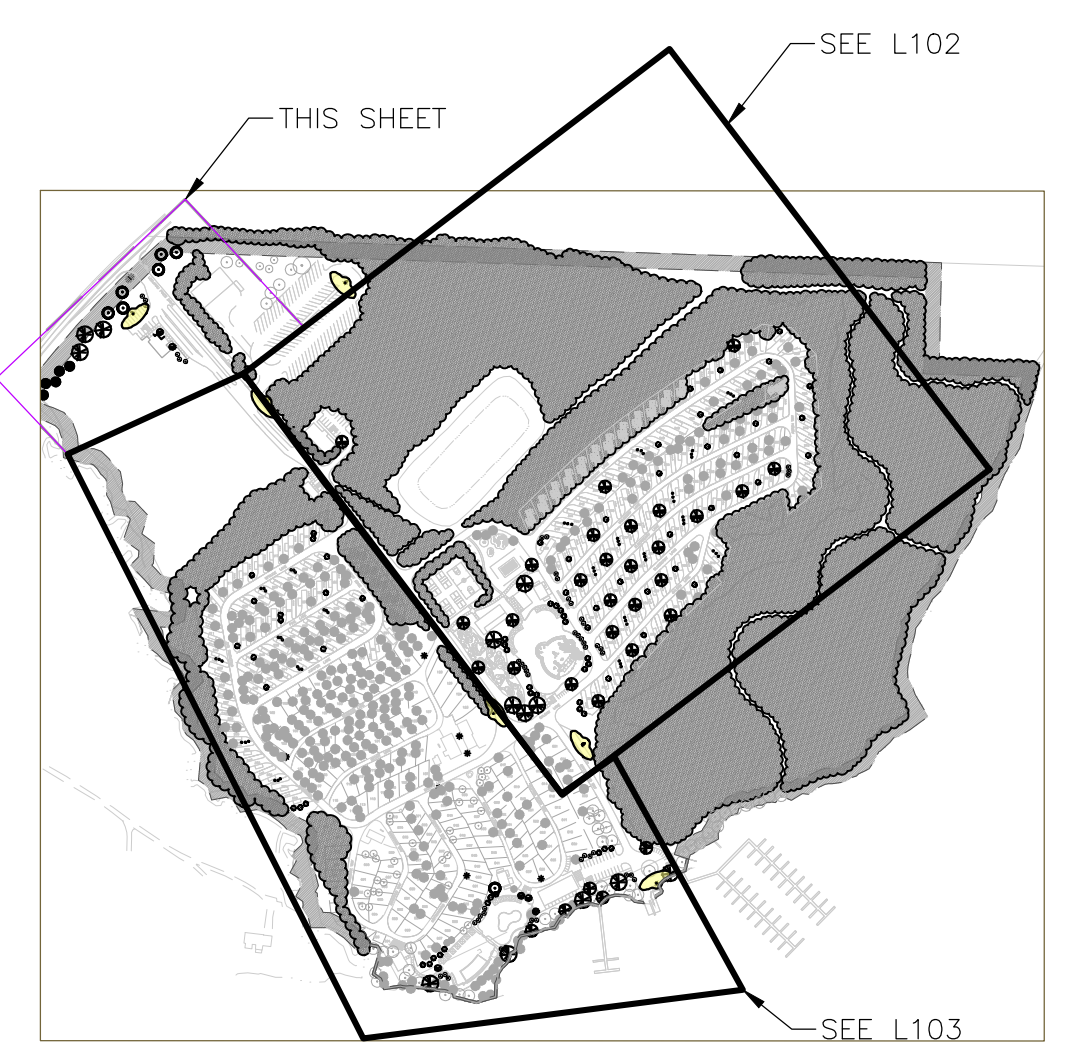


**1** EXISTING IDENTIFICATION SIGN TO REMAIN  
ELEVATION & PERSPECTIVE SCALE: 1/4"=1'-0"



PLANT LIST		
SYMBOL	ID	LATIN NAME
	AG	Amelanchier x grandiflora 'Autumn Brilliance'
	AR	Acer rubrum
	BA	Betula alleghaniensis
	PA	Picea mariana
	PS	Pinus strobus
	COS	Cornus sericea
	DIL	Diervilla lonicera
	VID	Viburnum dentatum

**NORTHGATE RESORTS**  
38 COMMERCE AVE. SW  
SUITE 200  
GRAND RAPIDS MI, 49503



REVISIONS

NOT FOR CONSTRUCTION

10/16/2023	LANDSCAPE PLAN
09/12/2023	LANDSCAPE PLAN
08/22/2023	LANDSCAPE PLAN
10/21/2022	LANDSCAPE PLAN

Drawn By KCH  
Designer KCH  
Reviewer  
Manager

Hard copy is intended to be 24"x36" when plotted. Scale(s) indicated and graphic quality may not be accurate for any other size.

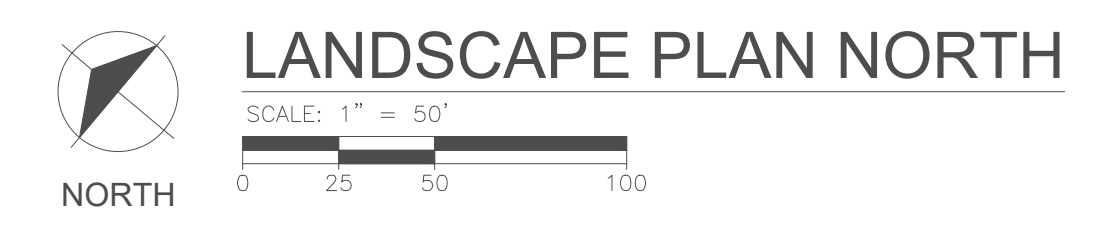
PROJECT NO.

SHEET NO.

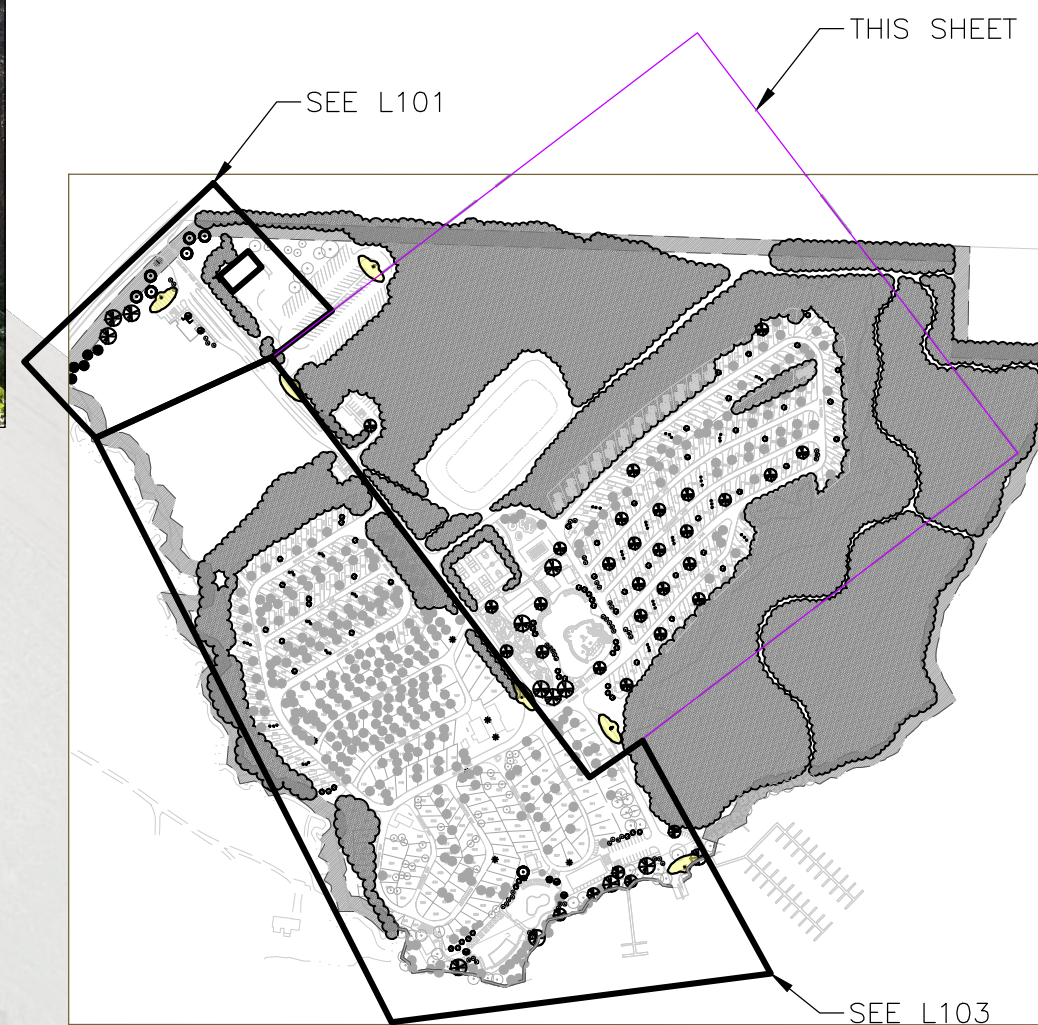
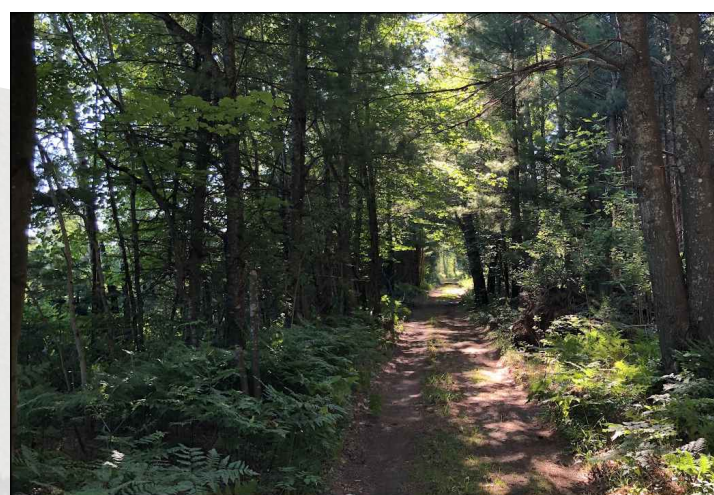
**L101**

NOTES

- ACTUAL PLANT LOCATIONS TO BE PLACED TO BEST ACCOMMODATE AS-BUILT SITE CONDITIONS.
- NOT ALL EXISTING TREES AND PLANTS IN THE PROJECT AREA MAY BE SHOWN
- TO THE GREATEST EXTENT POSSIBLE EXISTING VEGETATION WILL BE RETAINED, NOT REQUIRING LANDSCAPING.
- LIGHTING NOTE: THE INTENT OF THE CAMPGROUND IS TO HAVE LIMITED ARTIFICIAL OUTDOOR LIGHTING IN KEEPING WITH THE CAMPING EXPERIENCE. OUTDOOR LIGHTING TO BE DARK SKY APPROVED WITH FULL CUT-OFF FIXTURES. LIGHTING WILL BE USED TO ENHANCE VISITOR EXPERIENCE AND IMPROVE SAFETY. IT WILL COMPLY WITH LOCAL, STATE AND FEDERAL CODES, AND WILL PROMOTE DARK NIGHT SKY PRESERVATION. OUTDOOR ILLUMINATION WILL BE LOW INTENSITY AND WILL BE PROVIDED ONLY WHERE NECESSARY FOR SAFETY. THIS INCLUDES THE ENTRY SIGN, MAJOR INTERSECTIONS, AND BUILDINGS. EXISTING LIGHTING TO REMAIN. MAXIMUM POLE HEIGHT IS 22'.
- SIGNAGE NOTE: AN INTEGRATED SIGNAGE SYSTEM COMMUNICATING CAMPGROUND REGULATORY/ENFORCEABLE REQUIREMENTS, DIRECTIONAL/WAYFINDING INFORMATION, SAFETY/WARNING, IDENTITY INFORMATION, AND INTERPRETIVE INFORMATION TO CAMPGROUND GUESTS. SIGNAGE WILL BE LOCATED THROUGHOUT THE CAMPGROUND GENERALLY OUT OF VIEW FROM PUBLIC RIGHT-OF-WAY OR ADJACENT PROPERTIES. THE EXISTING IDENTITY/ENTRANCE SIGN AND ITS ASSOCIATED LIGHTING WILL REMAIN AS IS WITH ONLY THE SIGN ITSELF BEING LIT BY THE LAMP SOURCE. BUILDING IDENTIFICATION SIGNAGE LOCATED ON BUILDINGS WILL BE DOWN-LIT BY WALL-MOUNTED LIGHTS. ALL OTHER SIGNAGE WILL NOT BE LIT.



PLOT INFO: G:SHARED DRIVERSRGR DESIGN:IMP:LEELANAU PINESADRAWINGS01 CAD:PC:CTS:LNPL:101:LANDSCAPE PLANNING LAYOUT: L102 DATE: 10/17/2023 TIME: 3:54:47 PM USER: ELENZ



**MISS DIG 811**  
 3 full working days before you dig  
 1-800-482-7171  
 on the web at: www.missdig.org

PLANT LIST		
SYMBOL	ID	LATIN NAME
	AG	Amelanchier x grandiflora 'Autumn Brilliance'
	AR	Acer rubrum
	BA	Betula alleghaniensis
	PA	Picea mariana
	PS	Pinus strobus
	COS	Cornus sericea
	DIL	Diervilla lonicera
	VID	Viburnum dentatum

- NOTES**
- ACTUAL PLANT LOCATIONS TO BE PLACED TO BEST ACCOMMODATE AS-BUILT SITE CONDITIONS.
  - NOT ALL EXISTING TREES AND PLANTS IN THE PROJECT AREA MAY BE SHOWN
  - TO THE GREATEST EXTENT POSSIBLE EXISTING VEGETATION WILL BE RETAINED, NOT REQUIRING LANDSCAPING.
  - LIGHTING NOTE: THE INTENT OF THE CAMPGROUND IS TO HAVE LIMITED ARTIFICIAL OUTDOOR LIGHTING IN KEEPING WITH THE CAMPING EXPERIENCE. OUTDOOR LIGHTING TO BE DARK SKY APPROVED WITH FULL CUT-OFF FIXTURES. LIGHTING WILL BE USED TO ENHANCE VISITOR EXPERIENCE AND IMPROVE SAFETY. IT WILL COMPLY WITH LOCAL, STATE AND FEDERAL CODES, AND WILL PROMOTE DARK NIGHT SKY PRESERVATION. OUTDOOR ILLUMINATION WILL BE LOW INTENSITY AND WILL BE PROVIDED ONLY WHERE NECESSARY FOR SAFETY. THIS INCLUDES THE ENTRY SIGN, MAJOR INTERIOR INTERSECTIONS, AND BUILDINGS. EXISTING LIGHTING TO REMAIN. MAXIMUM POLE HEIGHT IS 22'.
  - SIGNAGE NOTE: AN INTEGRATED SIGNAGE SYSTEM COMMUNICATING CAMPGROUND REGULATORY/ENFORCEABLE REQUIREMENTS, DIRECTIONAL/WAYFINDING INFORMATION, SAFETY/WARNING, IDENTITY INFORMATION, AND INTERPRETIVE INFORMATION TO CAMPGROUND GUESTS. SIGNAGE WILL BE LOCATED THROUGHOUT THE CAMPGROUND GENERALLY OUT OF VIEW FROM PUBLIC RIGHT-OF-WAY OR ADJACENT PROPERTIES. THE EXISTING IDENTITY/ENTRANCE SIGN AND ITS ASSOCIATED LIGHTING WILL REMAIN AS IS WITH ONLY THE SIGN ITSELF BEING LIT BY THE LAMP SOURCE. BUILDING IDENTIFICATION SIGNAGE LOCATED ON BUILDINGS WILL BE DOWN-LIT BY WALL-MOUNTED LIGHTS. ALL OTHER SIGNAGE WILL NOT BE LIT.

**NORTHGATE RESORTS**  
 38 COMMERCE AVE. SW  
 SUITE 200  
 GRAND RAPIDS MI, 49503



REVISIONS

NOT FOR CONSTRUCTION

10/16/2023	LANDSCAPE PLAN
09/12/2023	LANDSCAPE PLAN
08/22/2023	LANDSCAPE PLAN
10/21/2022	LANDSCAPE PLAN

Drawn By: KCH  
 Designer: KCH  
 Reviewer:  
 Manager:

Hard copy is intended to be 24"x36" when plotted. Scale(s) indicated and graphic quality may not be accurate for any other size.

PROJECT NO.

SHEET NO.

**L102**

© Copyright 2022  
 All Rights Reserved



**NOTES**

1. ACTUAL PLANT LOCATIONS TO BE PLACED TO BEST ACCOMMODATE AS-BUILT SITE CONDITIONS.
2. NOT ALL EXISTING TREES AND PLANTS IN THE PROJECT AREA MAY BE SHOWN.
3. TO THE GREATEST EXTENT POSSIBLE EXISTING VEGETATION WILL BE RETAINED, NOT REQUIRING LANDSCAPING.
4. LIGHTING NOTE: THE INTENT OF THE CAMPGROUND IS TO HAVE LIMITED ARTIFICIAL OUTDOOR LIGHTING. IN KEEPING WITH THE CAMPING EXPERIENCE, OUTDOOR LIGHTING TO BE DARK SKY APPROVED WITH FULL CUT-OFF FIXTURES. LIGHTING WILL BE USED TO ENHANCE VISITOR EXPERIENCE AND IMPROVE SAFETY. IT WILL COMPLY WITH LOCAL, STATE AND FEDERAL CODES, AND WILL PROMOTE DARK NIGHT SKY PRESERVATION. OUTDOOR ILLUMINATION WILL BE LOW INTENSITY AND WILL BE PROVIDED ONLY WHERE NECESSARY FOR SAFETY. THIS INCLUDES THE ENTRY SIGN, MAJOR INTERIOR INTERSECTIONS, AND BUILDINGS. EXISTING LIGHTING TO REMAIN. MAXIMUM POLE HEIGHT IS 22'.
5. SIGNAGE NOTE: AN INTEGRATED SIGNAGE SYSTEM COMMUNICATING CAMPGROUND REGULATORY/ENFORCEABLE REQUIREMENTS, DIRECTIONAL/WAYFINDING INFORMATION, SAFETY/WARNING, IDENTITY INFORMATION, AND INTERPRETIVE INFORMATION TO CAMPGROUND GUESTS. SIGNAGE WILL BE LOCATED THROUGHOUT THE CAMPGROUND GENERALLY OUT OF VIEW FROM PUBLIC RIGHT-OF-WAY OR ADJACENT PROPERTIES. THE EXISTING IDENTITY/ENTRANCE SIGN AND ITS ASSOCIATED LIGHTING WILL REMAIN AS IS WITH ONLY THE SIGN ITSELF BEING LIT BY THE LAMP SOURCE. BUILDING IDENTIFICATION SIGNAGE LOCATED ON BUILDINGS WILL BE DOWN-LIT BY WALL-MOUNTED LIGHTS. ALL OTHER SIGNAGE WILL NOT BE LIT.

PLANT LIST		
SYMBOL	ID	LATIN NAME
AG	AG	Amelanchier x grandiflora 'Autumn Brilliance'
AR	AR	Acer rubrum
BA	BA	Betula alleghaniensis
PA	PA	Picea mariana

PS	PS	Pinus strobus
COS	COS	Cornus sericea
DIL	DIL	Diervilla lonicera
VID	VID	Viburnum dentatum

**MISS DIG 811**  
 3 full working days before you dig  
 1-800-482-7171  
 on the web at: www.missdig.org



**LANDSCAPE PLAN WEST & SOUTH**  
 SCALE: 1" = 60'  
 0 30 60 120

**NORTHGATE RESORTS**  
 38 COMMERCE AVE. SW  
 SUITE 200  
 GRAND RAPIDS MI, 49503



**REVISIONS**

**NOT FOR CONSTRUCTION**

10/16/2023	LANDSCAPE PLAN
09/12/2023	LANDSCAPE PLAN
08/22/2023	LANDSCAPE PLAN
10/21/2022	LANDSCAPE PLAN

Drawn By: KCH  
 Designer: KCH  
 Reviewer:  
 Manager:

Hard copy is intended to be 24"x36" when plotted. Scale(s) indicated and graphic quality may not be accurate for any other size.

PROJECT NO.

SHEET NO.

**L103**

© Copyright 2022  
 All Rights Reserved



PLOT INFO: G:SHARED DRIVES\MGR DESIGN\LP LEELANAU PINES\DWG\LANDSCAPE\LANDSCAPE PLAN\L103 LANDSCAPE PLAN\L103 DATE: 10/17/2023 TIME: 3:55:17 PM USER: ELBNTZ

PLANT LIST						
SYMBOL	ID	LATIN NAME	COMMON NAME	SIZE	REMARKS	NATIVE
	AG	Amelanchier x grandiflora 'Autumn Brilliance'	AUTUMN BRILLIANCE SERVICEBERRY	6-8' Tall, Multi Stem	#15 CONT.	YES
	AR	Acer rubrum	RED MAPLE	2.5" CAL., 12-14' Tall	B&B	YES
	BA	Betula alleghaniensis	YELLOW BIRCH	2.5" CAL., 12-14' Tall	B&B	YES
	PA	Picea mariana	BLACK SPRUCE	6'-8' Tall x 4'-5' Wide	B&B	YES
	PS	Pinus strobus	EASTERN WHITE PINE	6'-8' Tall x 4'-5' Wide	B&B	YES
	COS	Cornus sericea	REDSIER DOGWOOD	2-3' Tall	#7 CONT.	YES
	DIL	Diervilla lonicera	BUSH HONEYSUCKLE	18" Tall	#3 CONT.	YES
	VID	Viburnum dentatum	ARROWWOOD VIBURNUM	3-4' Tall	#10 CONT.	YES

- 6-FOOT WIDE NATIVE PLAN BUFFER STRIP TO INCLUDE BUT IS NOT LIMITED TO A MIX OF THE FOLLOWING PLANTS:
- Asclepias incarnata, SWAMP MILKWEED
  - Iris versicolor, BLUE FLAG IRIS
  - Lobelia cardinalis, CARDINAL FLOWER
  - Pontederia cordata, PICKERELWEED
  - Rudbeckia hirta, BROWN-EYED SUSAN
  - Schizachyrium scoparium, LITTLE BLUESTEM
  - Schoenoplectus tabernaemontani, SOFT STEP BULRUSH
  - Symphyotrichum firmum, ASTER

Project	Catalog #	Type
Prepared by	Notes	Date



**McGraw-Edison**  
**GLEON Galleon**  
 Area / Site Luminaire

**Product Features**

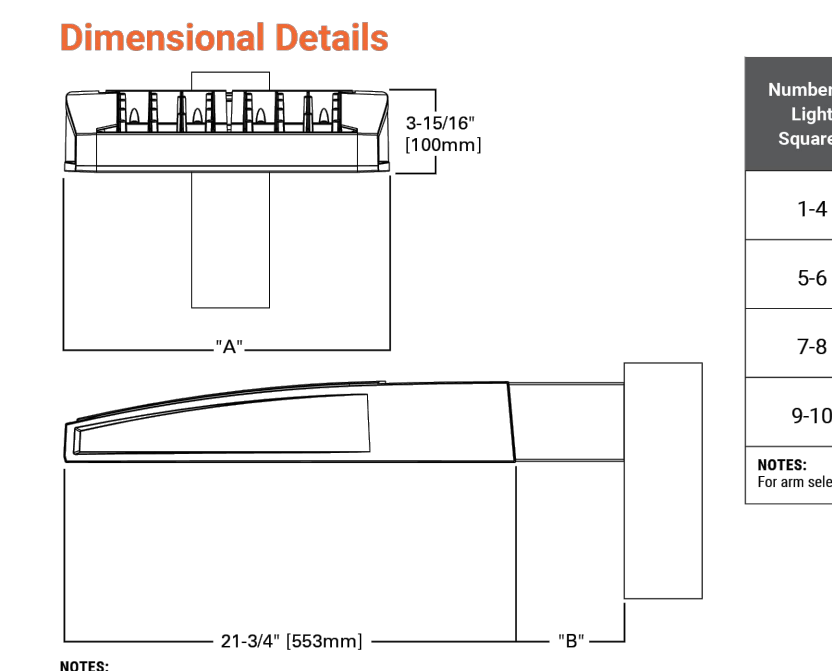
- LumenSense Technology
- Light Abolish™
- BAA

- Interactive Menu**
- Ordering Information page 2
  - Mounting Details page 3
  - Optical Distributions page 4
  - Product Specifications page 4
  - Energy and Performance Data page 4
  - Control Options page 9



- Quick Facts**
- Lumen packages range from 4,200 - 80,800 (34W - 640W)
  - Efficacy up to 156 lumens per watt
  - Options to meet Buy American and other domestic preference requirements

- Connected Systems**
- WaveLinX
  - Enlighted



Number of Light Spheres	"A" Width	"B" Standard Arm Length	"B" Extended Arm Length	"B" QM Arm Length	"B" QM Length	"B" OMA Length
1-4	15-1/2"	7'	10'	10-5/8'	-	16-9/16'
5-6	21-5/8"	7'	10'	10-5/8'	-	16-9/16'
7-8	27-5/8"	7'	13'	10-5/8'	10-5/16'	-
9-10	33-3/4"	7'	16'	-	10-5/16'	-

NOTE: For arm selection requirements and additional line art, see Mounting Details section.

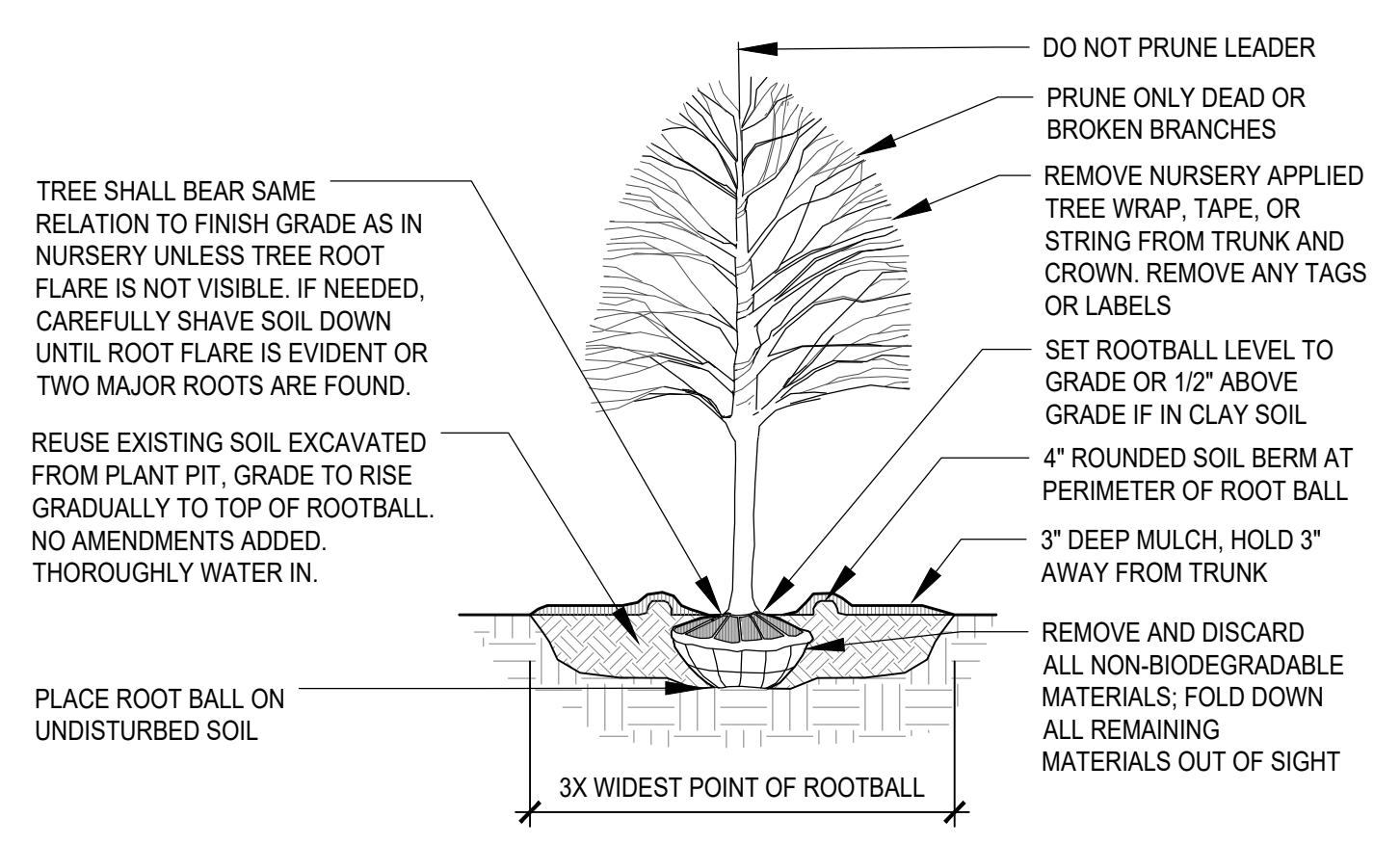


PS50002DEN page 1  
 May 24, 2023 7:00 PM

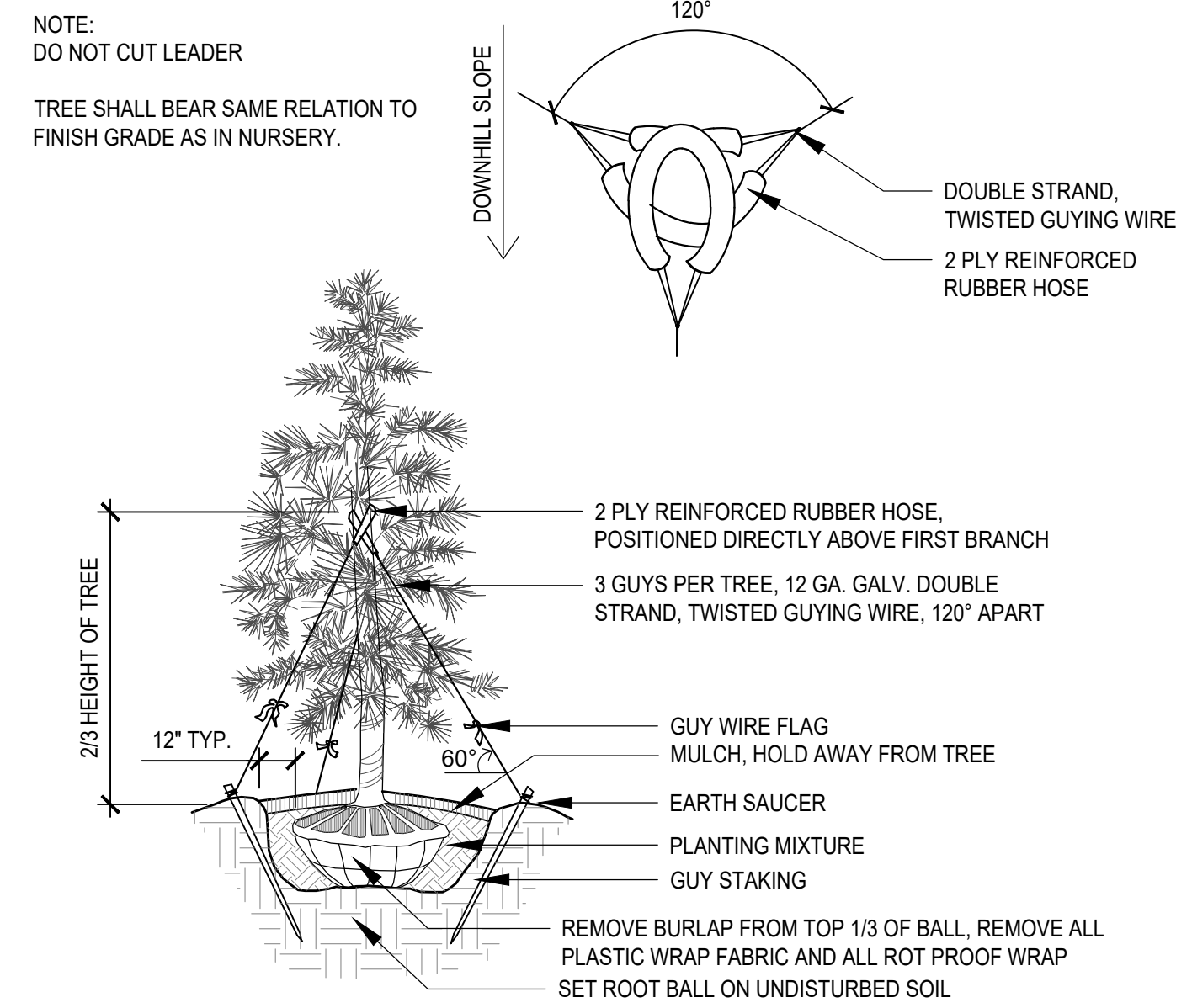
**4 AREA LIGHT CUT SHEET** NOT TO SCALE

NOTE:  
 TREE SHALL BEAR SAME RELATION TO FINISH GRADE AS IN NURSERY.

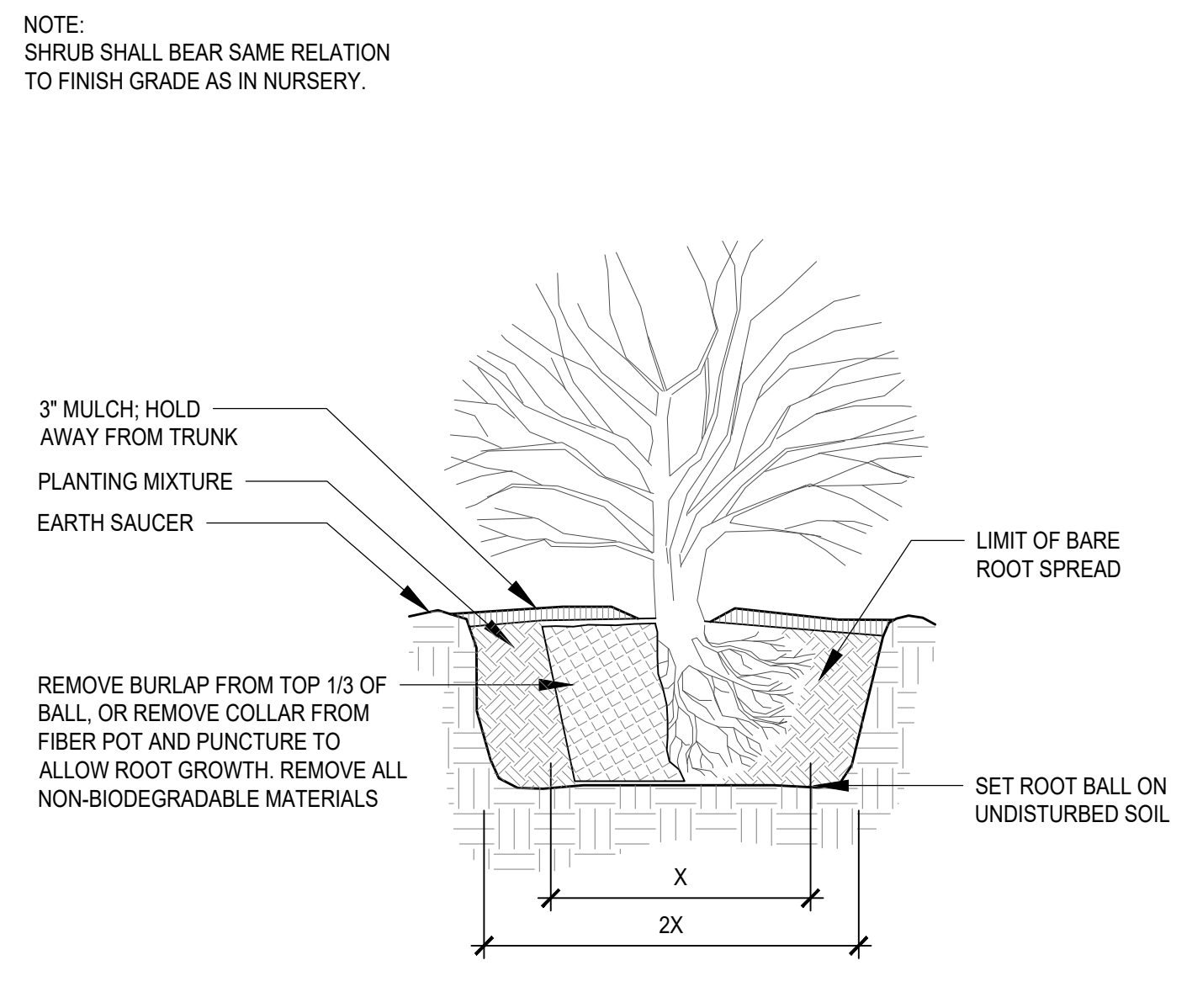
DO NOT STAKE UNLESS PLANTED ON SLOPE, IN HEAVY CLAY SOIL, OR WINDY CONDITIONS.



**1 DECIDUOUS TREE PLANTING SECTION** NOT TO SCALE



**2 EVERGREEN TREE PLANTING SECTION** NOT TO SCALE



**3 SHRUB PLANTING SECTION** NOT TO SCALE

PLANT LIST & DETAILS

MISS DIG 811  
 3 full working days before you dig  
 1-800-482-7171  
 on the web at: www.missdig.org

**NORTHGATE RESORTS**  
 38 COMMERCE AVE. SW  
 SUITE 200  
 GRAND RAPIDS MI, 49503



REVISIONS

NOT FOR CONSTRUCTION

10/16/2023	LANDSCAPE PLAN
09/12/2023	LANDSCAPE PLAN
08/22/2023	LANDSCAPE PLAN
10/21/2022	LANDSCAPE PLAN

Drawn By KCH  
 Designer KCH  
 Reviewer  
 Manager

Hard copy is intended to be 24"x36" when plotted. Scale(s) indicated and graphic quality may not be accurate for any other size.

PROJECT NO.

SHEET NO.

**L104**



PLOT INFO: G:\SHARED DRIVERS\DR\DESIGN\LP\_LEELAMAU PINES\DRAWINGS\01 CAD\PCS\L104.LANDSCAPE PLANNING LAYOUT.L104 DATE: 10/17/2023 TIME: 3:08:57 PM USER: ELENYZ