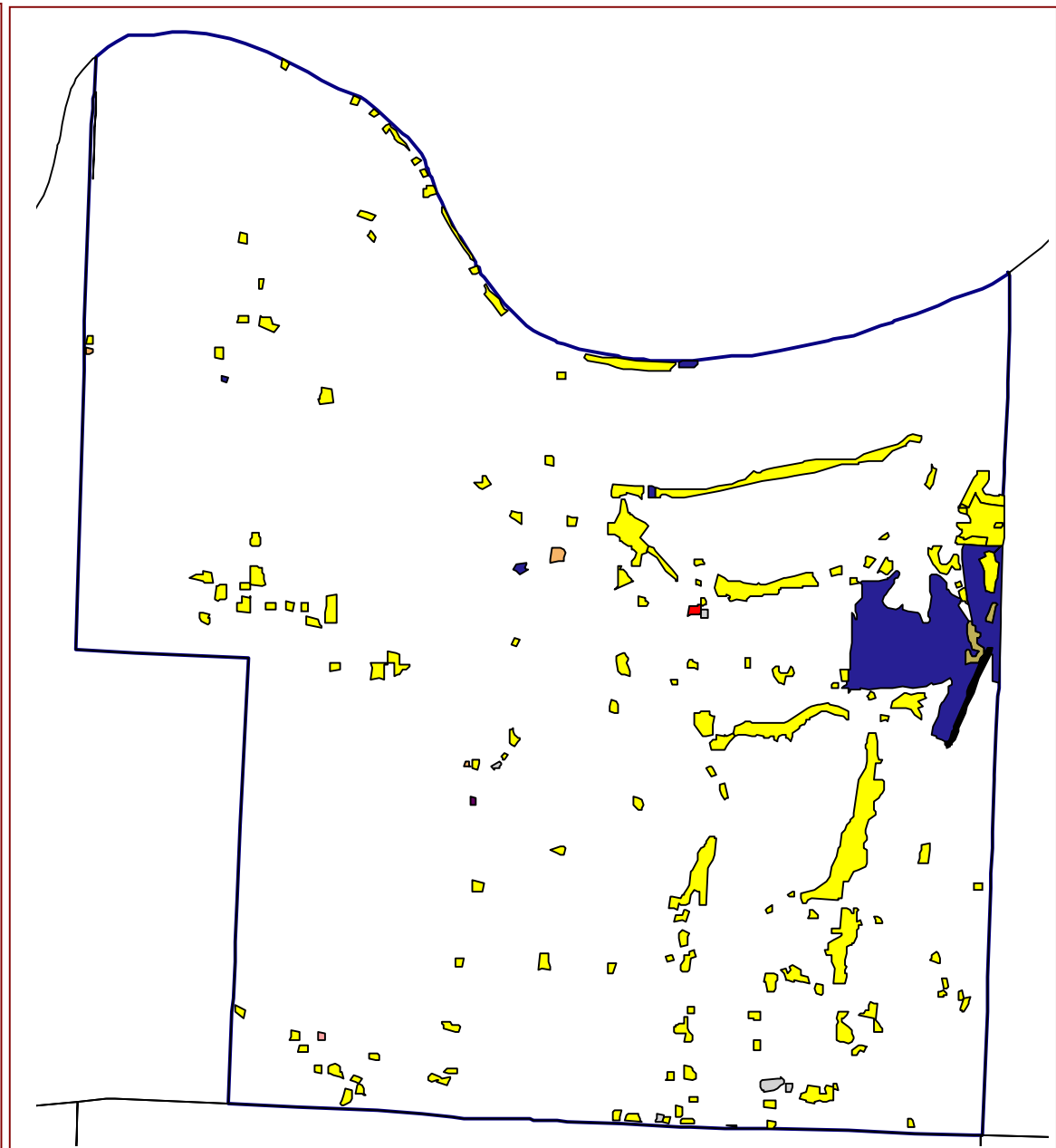



*2000 Land Uses*

- Single Family, Duplex
- Cemeteries
- Multi-Family-Low Rise
- Neighborhood Business
- Commercial, Services, Institutional
- Industrial
- Air Transportation
- Communications
- Outdoor Recreation
- Institutional



Topography (feet)

-  577 - 650
-  651 - 750
-  751 - 850
-  851 - 950
-  951 - 1115

 Wetlands (outlines)

